

BEDIFFERENT

ACE GERMANY



aras[®]
ACE

Custom Business Process Management

Rob McAveney

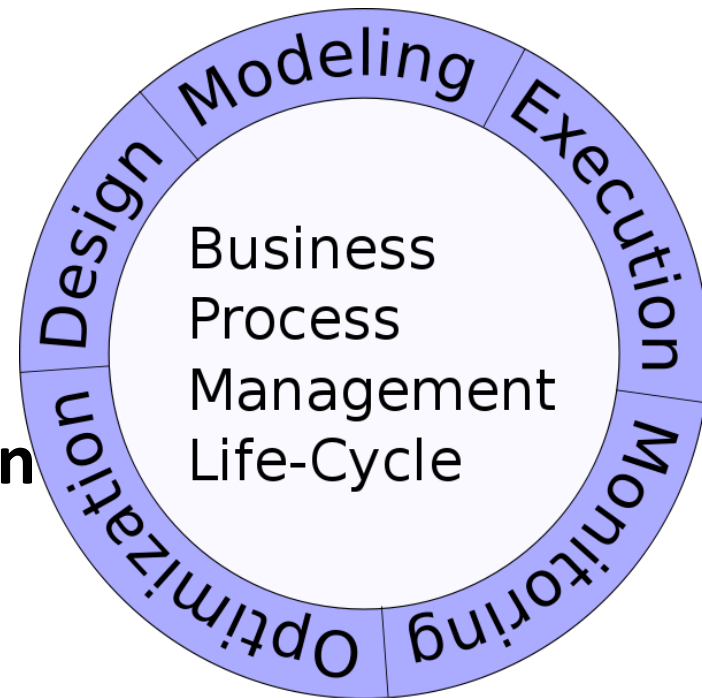
Director of Product Management

Aras Corp



Background

- ▶ **Business Process Management (BPM) is intended to be a systematic approach to improving business processes**
- ▶ **Processes may include activities that humans perform as well as system activities**
- ▶ **Processes may cross department, location, company and application boundaries**
- ▶ **The “big picture” view has BPM tying together people, systems and content to execute repeatable processes in the most efficient way possible**



Workflow and Life Cycle



- ▶ **Workflow models things people (or systems) do**
 - May have parallel branches, multiple assignments, looping and sub-flows

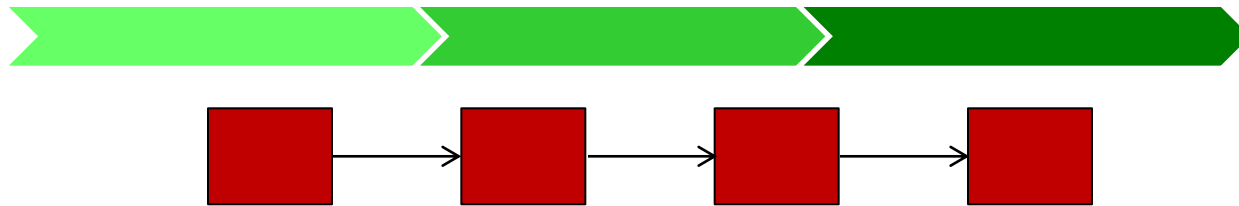
- ▶ **Life Cycles define mutually exclusive states**
 - An item may be in only one state at a time
 - Transitions between states often trigger business rules
 - Multiple workflows (automated or manual) may trigger the same state transition

- ▶ **BPM solutions sometimes blur the line**
 - How can something be in more than one state at a time?
 - Why model the same business rule in multiple workflows?

Two Views of Workflow

▶ Workflow drives Life Cycle

- One overarching Workflow runs for the duration of multiple Life Cycle states



- Often used for relatively short Life Cycles, like for ECRs

▶ Life Cycle drives Workflow

- A Workflow models the actions to get from one Life Cycle state to the next



- Used between states of long Life Cycles, like Active→Obsolete

BPM with Aras

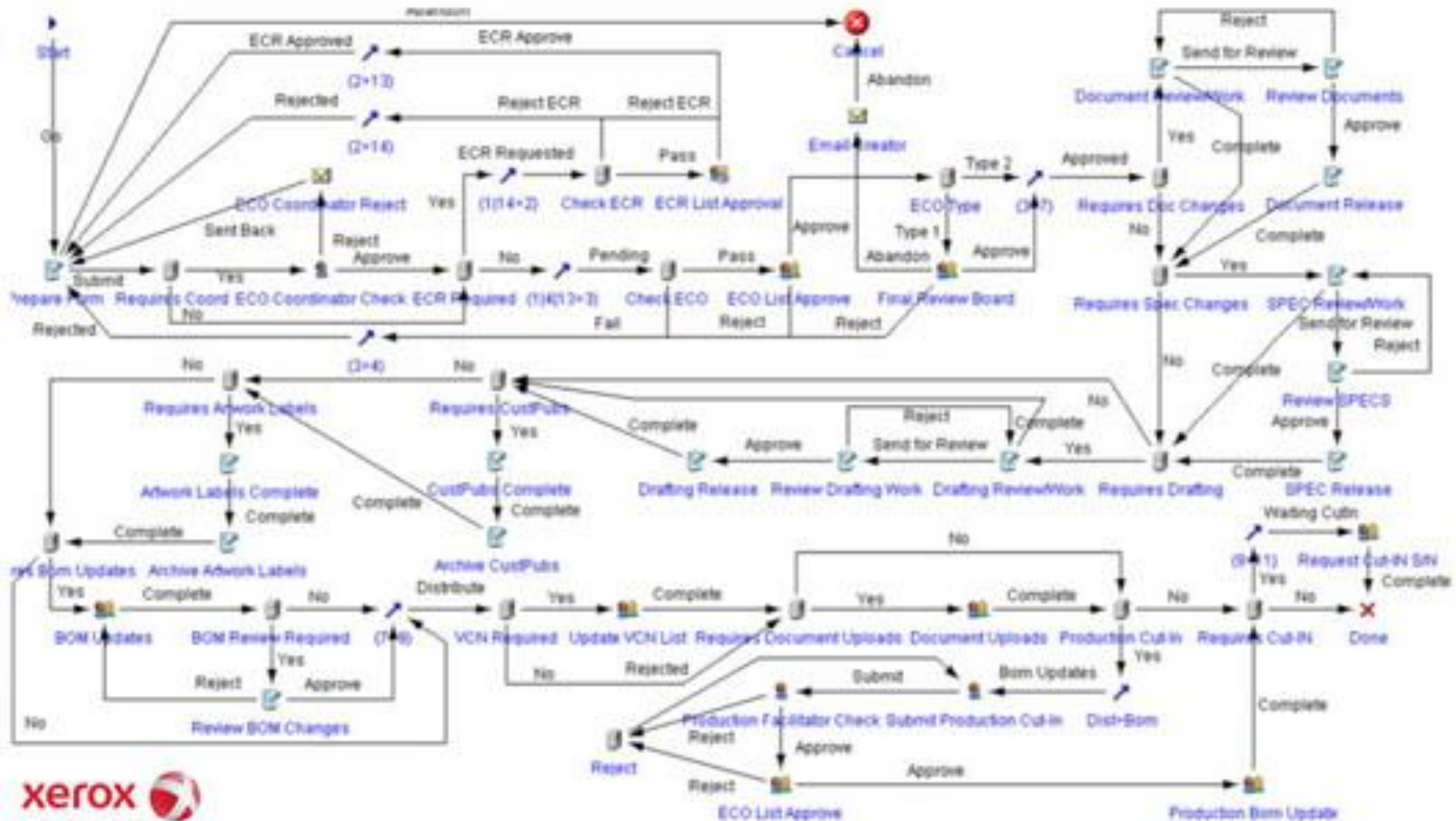


- ▶ **Model both simple and complex processes using a graphical UI**
- ▶ **Execute repeatable processes based on templates**
- ▶ **Participate in processes using a consistent, familiar UI**
- ▶ **Leverage PLM content during process execution**
- ▶ **Integrate other systems via federation**
- ▶ **Monitor running processes graphically or with reports**
- ▶ **Analyze process execution data using known APIs**
- ▶ **Separate state-based rules from process flow**

BPM with Aras

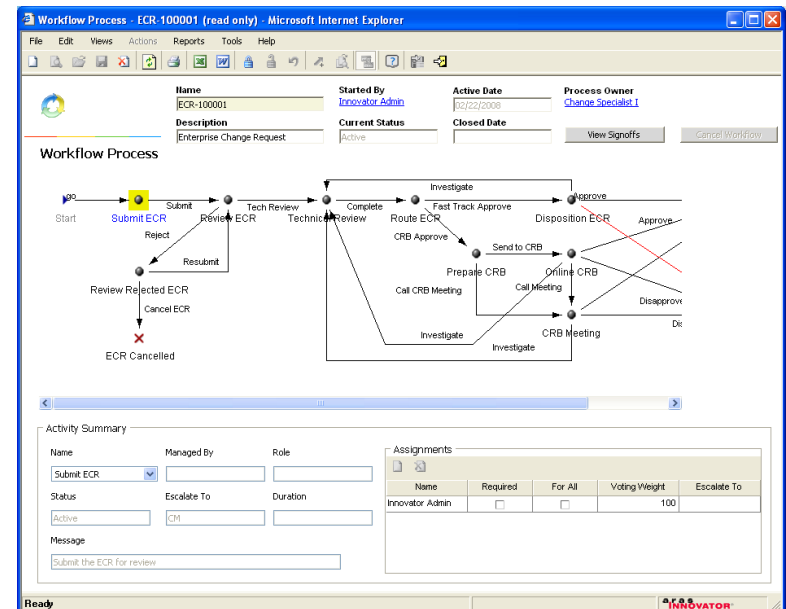
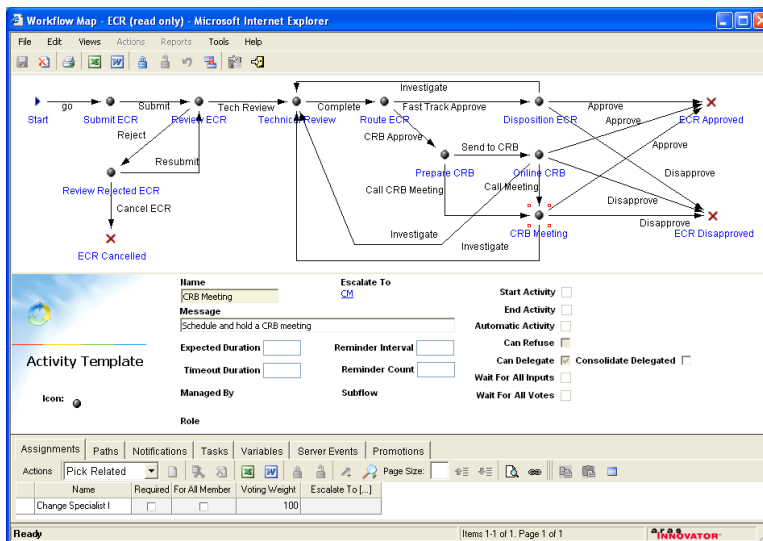


► Real world example, running in production at Xerox



Process Templating

- ▶ Workflow Maps serve as business process templates, and are used to model repeatable processes
- ▶ Workflow Maps are instantiated (copied) to become Workflow Processes, which actually execute



Control Flow Options

▶ Start & End Activities

- Begin and end workflows, multiples allowed

▶ Interactive Voting

- Voting options defined graphically using Paths

▶ Default Paths

- Handle unresolved voting, automated paths

▶ Override Paths

- “Short circuit” a proces when a problem is found

▶ Wait For All Inputs

- Pause the flow until all open branches finish

Assignments & Voting



- ▶ **Assign activities to individuals, groups or roles**
- ▶ **Multiple assignments per activity**
 - Make group decisions
 - Assign to all group members, but let one do the work
- ▶ **Voting Weights**
 - Flexible options to decide which path to follow
 - Majority Rules
 - Pluralities
 - Manager Override
- ▶ **Collect all votes or move on once a decision is made**

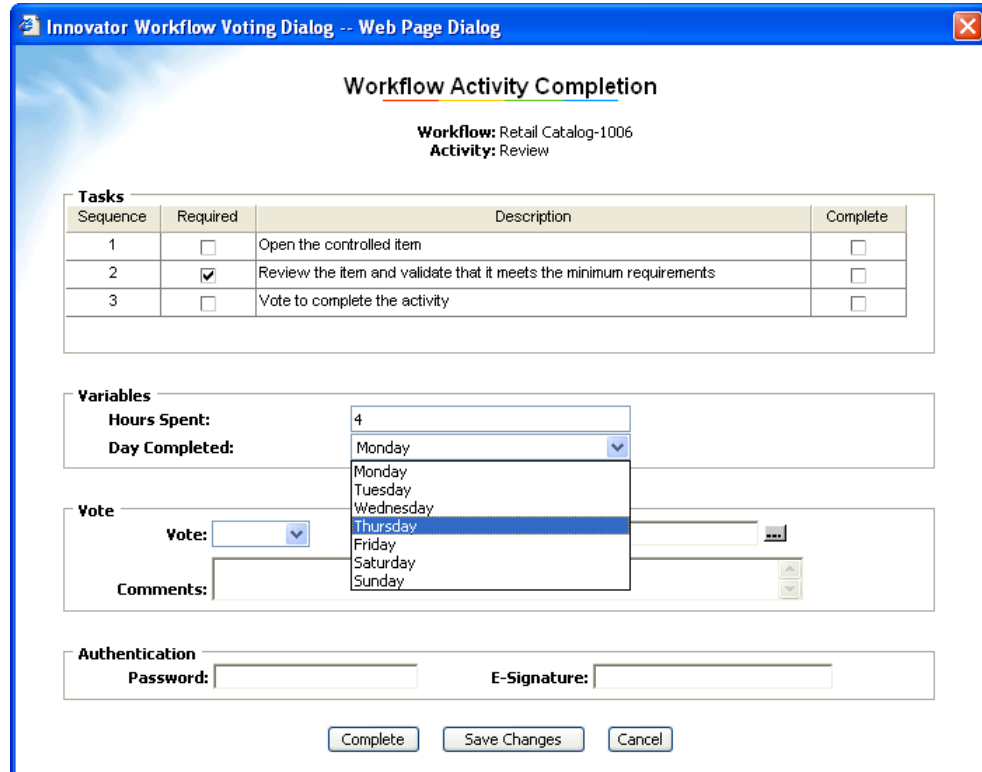
Data Collection

▶ Task Lists

- Break down the activity into defined steps
- Require signoff that certain tasks are complete

▶ Variables

- Collect information during activity signoff
- Store in workflow history or copy to other items



Innovator Workflow Voting Dialog -- Web Page Dialog

Workflow Activity Completion

Workflow: Retail Catalog-1006
Activity: Review

| Sequence | Required | Description | Complete |
|----------|-------------------------------------|---|--------------------------|
| 1 | <input type="checkbox"/> | Open the controlled item | <input type="checkbox"/> |
| 2 | <input checked="" type="checkbox"/> | Review the item and validate that it meets the minimum requirements | <input type="checkbox"/> |
| 3 | <input type="checkbox"/> | Vote to complete the activity | <input type="checkbox"/> |

Variables

Hours Spent:

Day Completed:

Vote

Vote:

Comments:

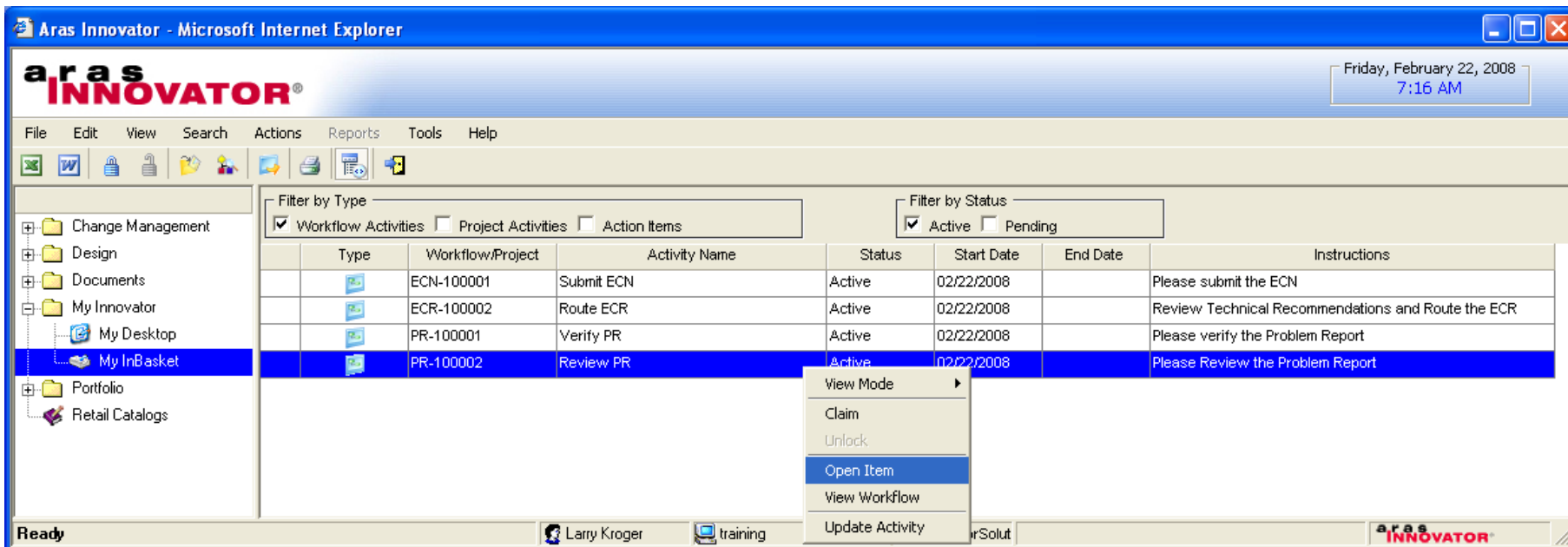
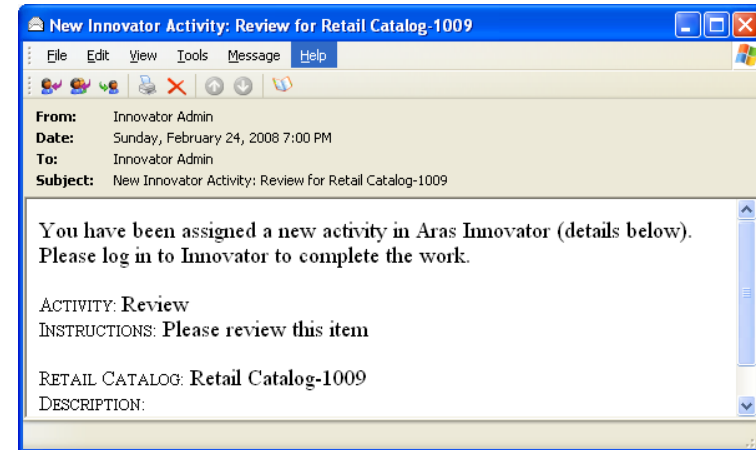
Authentication

Password: E-Signature:

InBasket & Notification

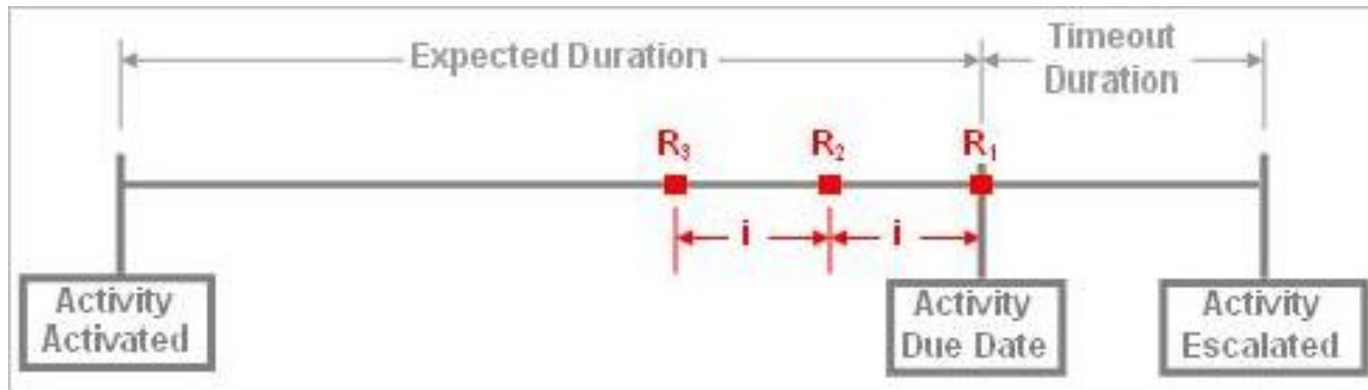


- ▶ Notify users of assigned activities
- ▶ Find all assigned activities in one place
- ▶ Perform the work directly in PLM



Reminders and Escalation

- ▶ Define a timeline for completion of an activity



- ▶ Dates are adjusted when the activity is activated
- ▶ One or more reminders can be sent before the due date
- ▶ Activity gets escalated to management if it takes too long to complete

Dynamic Workflow Execution



- ▶ **Change a workflow while it's running**
- ▶ **Dynamic role resolution: assignments to the Owner of the item**
- ▶ **Dynamic activity assignments, either interactively or using custom business rules**
- ▶ **Multi-level workflows**
- ▶ **Rich event model to enable business logic and integrations**
- ▶ **Simple, robust interaction between workflows and life cycles**

Why Aras for BPM?



- ▶ **Enterprise Open Source model**
- ▶ **Leverage existing investment**
- ▶ **Highly capable workflow modeling and execution engines**
- ▶ **We know the difference between life cycle and workflow**
- ▶ **It just works!**

ACE Germany

Questions?

Rob McAveney

Director of Product Management

Aras Corp

