

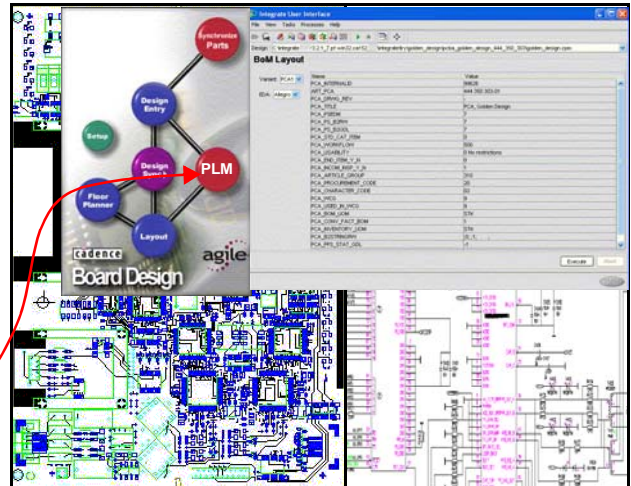
Concept_hdl and Allegro with Product Lifecycle Management

You have invested all this knowledge into your Cadence design. Now you want to...

- associate it with the versioned data of enclosure, software, documentation, harness, cabinet...
- forward data to other persons in manufacturing, service, qc, purchasing, test, materials control...

You want this process to be automatic, painless, easy and quick and you want to focus on design, not on databases and processes in the company.

➔ You want Integrate



Operation

You operate an Integrate function from the Cadence Project Manager PLM button. The integration establishes the communication between your Cadence design tools and the PLM system.

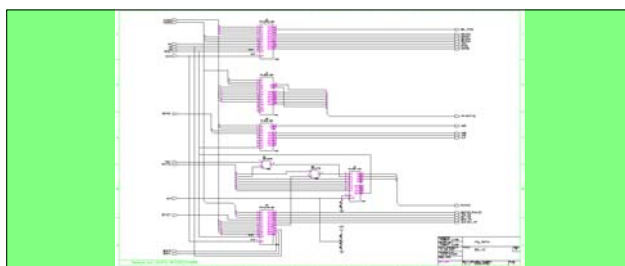
Synchronize Metadata

Build the data model of the electronic product automatically in PLM. In the same process, deposit metadata like part number and version from PLM once per project into the Cadence design structure.

Metadata	Metadata in Table Field	Field Type
Document No.	T_DOC_DAT_DOCUMENT_ID	S80
Revision	T_DOC_DAT_DOC_VERSION	S10
Version	T_DOC_DAT_DOC_REVISION	S10
Customer	T_DOC_DAT_SEC_CUSTOMER	S20

Check-in

Update drawing frame properties in schematics and text strings in PCB drawings with metadata. Check an innovation container with your design into PLM for ECO. Optionally include the execution of Cadence Archiver.



For concurrent engineering between the Concept_hdl and Allegro designs, automatically use the revision_dependant configuration management.

Redesign

Resolve the design for ECO or re-use from an innovation container in PLM into the Cadence Design environment for immediate use, with optional reservation of the design in PLM.

Get

Reuse a design or part of it in a new design.

BOM

Extract preliminary Bill-of-Materials data after Package into PLM for advance material disposition. Update the BOM in PLM after PCB Layout with associated accessory parts like sockets, heatsinks and firmware. The BOM includes relation attributes like reference designator, x, y, rot, and side.

1209301	340	1	R4	4.445	18.491	180
1209315	350	1	R5	6.985	15.316	180
1209347	360	1	R6	13.335	2.887	180
10721715	370	1	R14	6.985	40.640	90

Support of your company's BOM structure including variant Bill-of-Materials from the Cadence design.

Board Fabrication

Based on configurable Allegro Views, build and check-in a versioned container of Gerber and Excellon data for the manufacture of the bare PCB or panel. The data then might be accessed via a password-protected PLM web client by your PCB manufacturer.

