

## Aras Innovator E-mail Connector

The comprehensive integration of e-mails into the PLM system

**aras**  
**INNOVATOR**®

In order to make even e-mails

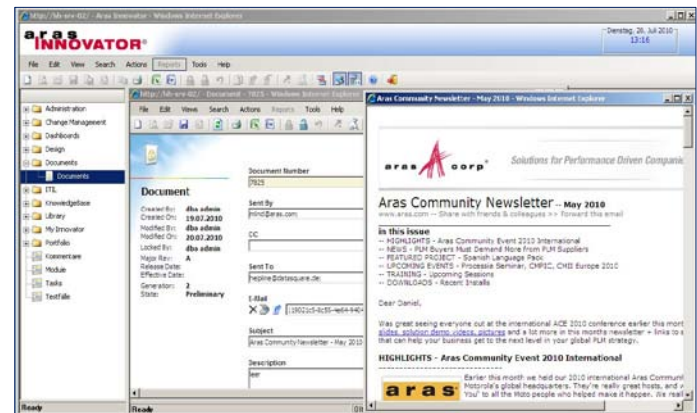
available for Aras® Innovator®, DataSquare has developed the interface Aras Innovator E-mail Connector.

In product lifecycle management, alongside data management and process control with a PLM solution, e-mail communication plays an important role—especially when external partners are involved. The integration of e-mails into the PLM system is a considerable advantage when it comes to gapless documentation and the directed distribution of information.

With the E-mail Connector e-mails from any e-mail client supporting the IMAP protocol can be transferred directly to Aras Innovator. Thereby, the IMAP server, which is integrated into the interface, acts as a gateway between the e-mail client and the Aras Innovator server.

Incoming and outgoing e-mails can therefore be administered thoroughly in Aras Innovator, including their attachments. They can be assigned to projects or processes, for example, so they are available to all project members. This spares the recipient the manual forwarding of e-mails, and in that way ensures optimal project communication and documentation.

DataSquare offers the E-mail Connector in a basic version as an open solution for the Aras Innovator community. It can be downloaded for free under [www.aras.com/communityprojects](http://www.aras.com/communityprojects) from the Aras Community Project Site.



Since October 2011, the Aras Innovator E-mail Connector is also available in a commercial enterprise version. This includes a new e-mail management assistant that makes mass processing and distribution of permissions possible. So, even largest quantities of e-mails will be assigned quickly and comfortably.

### Aras Innovator E-mail Connector at a glance:

- Integration of e-mails into the PLM system
- Comprehensive administration of all incoming and outgoing e-mails incl. attachments
- Gapless documentation of e-mail communication
- Optimization of the information flow
- Basic version as a free, open solution for download
- Commercial enterprise version for mass processing