

Aras Innovator PLM TD Connector

The optimal integration of product documentation into product lifecycle management



The new interface Aras® Innovator®

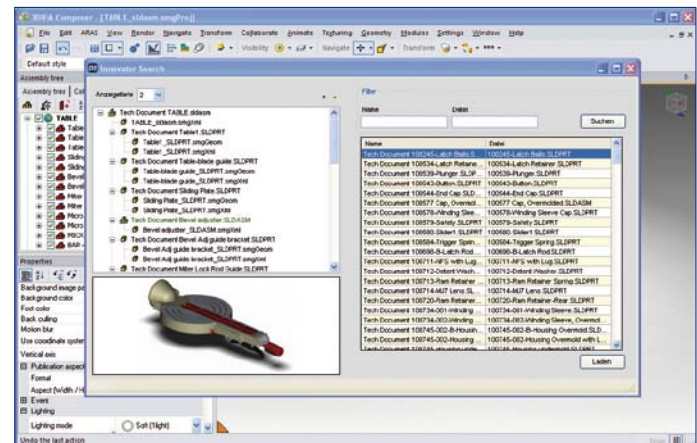
PLM TD Connector, developed by DataSquare, incorporates product documentation solutions successfully into the product lifecycle management.

A comprehensive and seamless integration into product development, production and service processes simplifies not only the product documentation process, but supports also the coordination within the whole company.

With its PLM TD Connector DataSquare offers various possibilities for process control and optimization of workflow within technical documentation. The process gets automated, so that time and expenditure will be reduced. The time to market of a product and the creation of service and maintenance documents can therefore be made considerably faster.

The Aras Innovator PLM TD Connector cares for the perfect synchronization of all product data. It enables the bidirectional exchange of drawing, model and assembly data between the PLM system and the technical documentation department.

CAD data and all technical product information are stored directly from the CAD system into Aras Innovator, to be automatically converted into the data format of the product documentation solution. After that, all data is available in Aras Innovator, where it will stay synchronized.



Also, the Aras Innovator PLM TD Connector secures the comprehensive and effective administration of technical documentation.

Aras Innovator PLM TD Connector at a glance:

- Ideal integration of product documentation into product development and production processes
- Perfect synchronization of all product data
- Effective administration of technical documentation
- Automation and acceleration of documentation processes
- No upfront investment for licenses