

GEnIUS for Aras Innovator

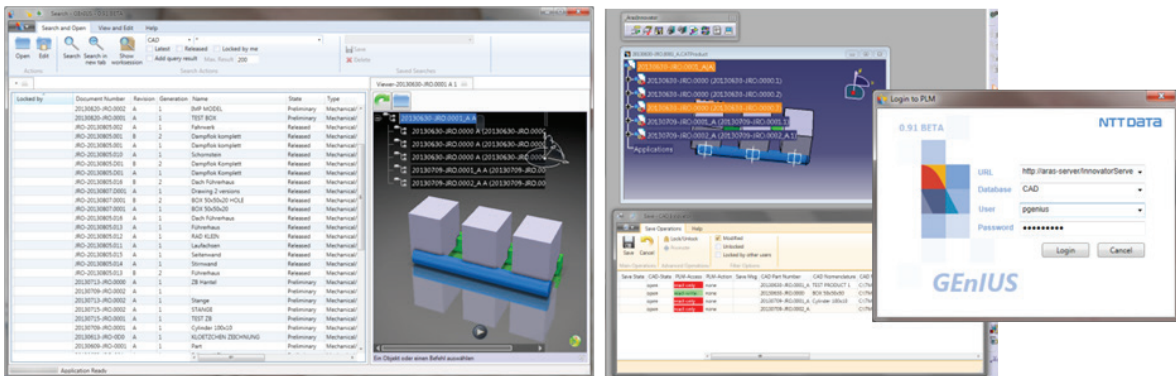
Enabling integration across multiple authoring tools

GEnIUS is changing the way to work with Aras Innovator. This solution is the implementation of global customer requirements into a next generation integration platform based on ARAS Innovator project experiences. NTT DATA's GEnIUS is enabling integration across multiple authoring tools using one common user interface. For example, create BOMs in MS Excel and save them directly to Aras Innovator, Manage CAD data e.g. CATIA V5 design data in a simple and intuitive way.

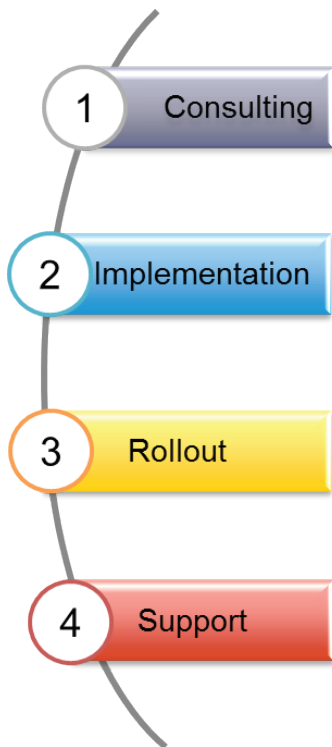
- Global** ■ It's cool
- Engineering** ■ It's easy to use
- Innovator** ■ It's extendable
- Unified** ■ It's a solution for Aras Innovator
- Solution** ■ It's an open integration platform for Windows based applications
- It's GEnIUS

- Why is it GEnIUS?
- Fully open approach, SOA based integration framework
 - Import your document content (not just files) into Aras Innovator (e.g. BOM from Excel, Requirements from Word)
 - Validate against existing data before importing (preview & decide)
 - Connect your enterprise applications via connector modules which are open, easy to adapt and minimizing implementation efforts (MCAD, ECAD, Analysis, CAM, Office and many more)
 - Predefined connector modules for BOM and CAD Management (BOM within Excel, CATIA V5)
 - Enterprise client fully integrated into Aras Innovator:
 - Multi selection for promote, lock, unlock ...
 - Instant updates on columns after changes
 - Viewer integration (based on Aras viewer)
 - Minimized customization (based on Aras customizing)
 - Easy to use like any Microsoft application

NTT DATA is your partner for Innovation & Product Lifecycle Management.



Our approach



- Consulting regarding CAD integration into Aras Innovator
- Requirement workshops of customer specific customizations
- Project scheduling end-to-end services within the project
- Customizing of GENIUS
- Additional features based on customer requirements
- Test and release of the customization
- Rollout of software and customizing
- Migration of CAD and metadata
- Documentation of system and customizing
- Training
- Technical support for administration
- Methodology support for End users

Your contact:

Jens Rollenmüller
 Managing Consultant IPLM
 Tel.: +49 (172) 851 2929
 Jens.Rollenmueller@nttdata.com

About NTT DATA

NTT DATA offers innovative business and IT solutions, which provide its customers with tangible added value. Headquartered in Tokyo, the Japanese IT and consulting company operates in over 35 countries. NTT DATA focuses on long-term commitment: The company combines its global reach with its knowledge of the local market to provide premier professional services from consulting and systems development to outsourcing.

NTT DATA combines local flexibility and agility with centrally coordinated access to global resources. NTT DATA's long-standing customer relationships are a testament to its ability to combine the best of both worlds: the scale and resources of a globally operating group, combined with local teams possessing profound market insight and the expertise of local teams. This has allowed NTT DATA to meet customer needs all over the world, consistently exceeding their expectations for quality, best practice approaches and local knowledge.