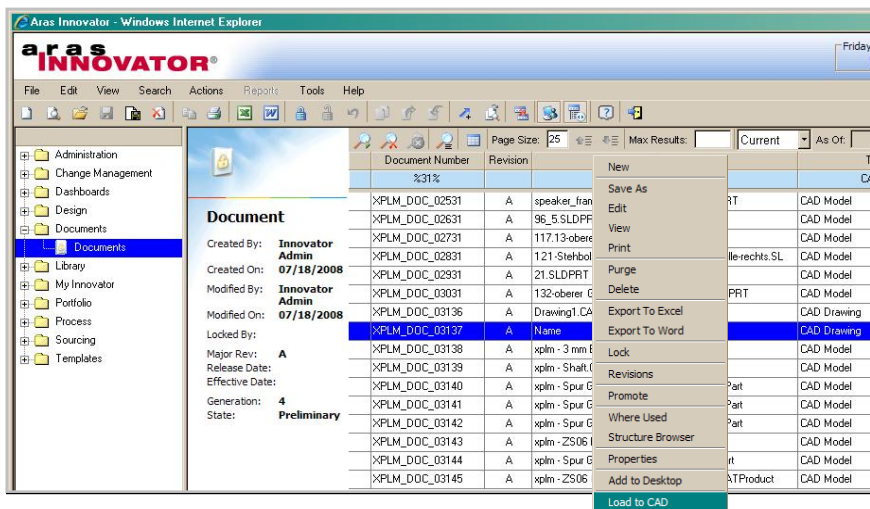


Aras Innovator® Integration for CATIA® V5



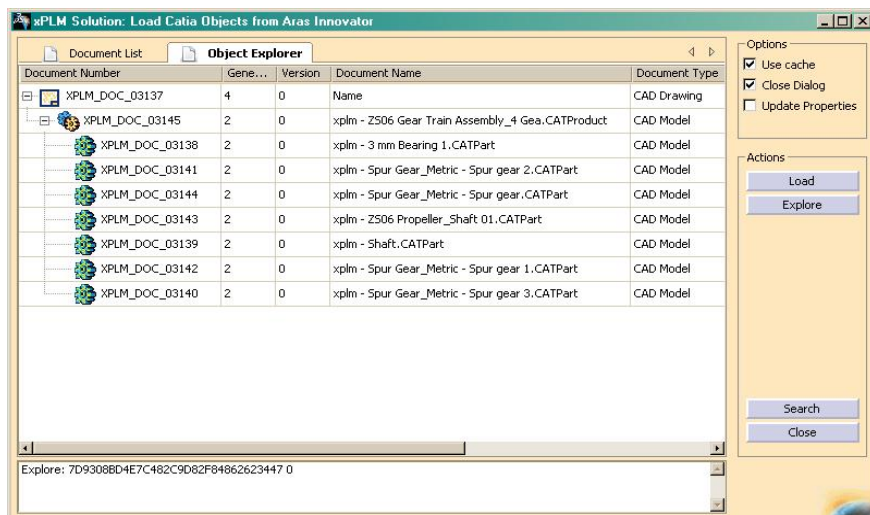
J2xPLM® INTEGRATION PLATFORM

xPLM Solution's J2xPLM Integration Platform provides an Aras Innovator CATIA V5 integration with flexible deployment options to support your engineering best practices! xPLM Solution's expertise in CAD and PLM integrations provides Aras and CATIA users a robust, flexible and configurable integration.

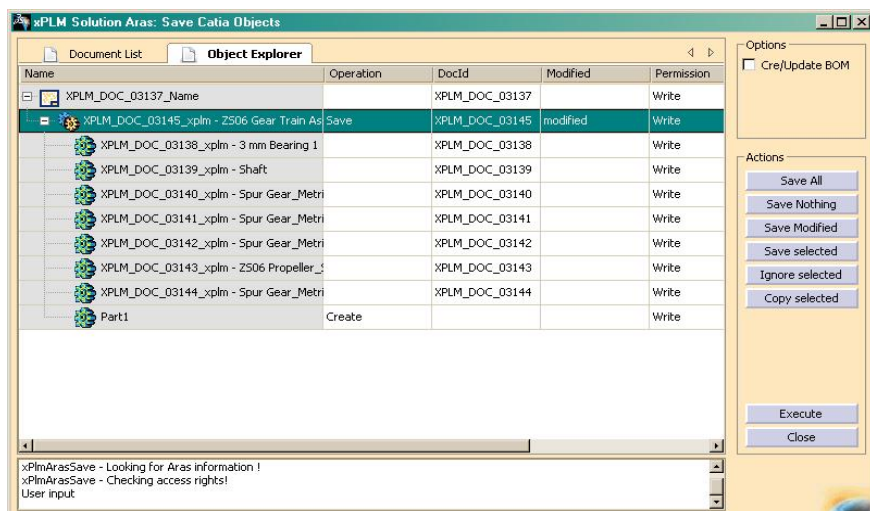


A good integration between PLM and CAD is a prerequisite to support efficient engineering processes and drive increased innovation.

xPLM Solution presents a next generation of Cax and PDM integrations, based on their J2xPLM Integration Platform, for Aras Innovator and CATIA V5. The Aras Innovator integration for CATIA V5 offers Aras users an effective and intuitive integration. Data and structures of both Aras Innovator and CATIA V5 are integrated providing the ability for bi-directional exchange of documents, CAD files, BOMs, parts (material masters), classification, item status and more. Robust customization capabilities are provided yielding lower support and maintenance costs.



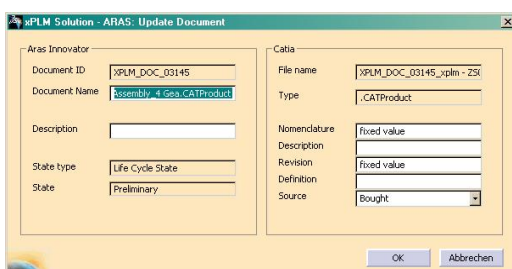
Load Preview Browser



Save Preview Browser

Integration Capabilities

- Document & File Management
- Management of Complex CAD Structures
- Items & BOM, Based on CAD design
- Workflow and Release Management
- Checkin and Checkout from CAD
- Take and Release Ownership
- Management of Multiple Revisions
- Save Preview Before Final Saving
- Search and Load from PDM
- Bidirectional Exchange of Properties
- Update PLM-Attributes from CAD
- File Conversion (e.g. Viewables)



Save Dialog

J2xPLM Integration Platform Features

Deep Integration with Aras Innovator PLM Objects and Object Structures:

- Document and File Management, Material Master and BOM, Classification, Change and Release Management

Additional Benefits:

- Dialogs and features can be enhanced and configured specifically for users
- J2xPLM Integration Platform can access multiple PLM and ERP sites in parallel
- Batch processor enables file conversions and bulk transfer operations
- Script-Based Process Definition Language
- COM Automation Support (VBA Script, Java Script, C#)
- XML definition enables creation and configuration of new integration objects (e.g. any Aras API component)

Aras Innovator Integration for CATIA V5

Integration: J2xPLM ACV5
Version: ACV5 v 1.1.0
Release: September, 30th 2008

Supported CATIA Objects

- CATProduct, CATPart, CATDrawing
- Design Table
- CATProcess, CATAnalysis (Version 1.2)

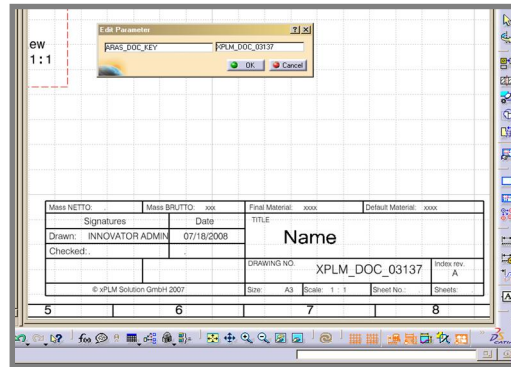
System Requirements

J2xPLM: V 1.0 or later
Aras Innovator: 8.2.0 or later
CATIA V5: R16, R17, R18 (intel_a)

The minimum hardware and software requirements are the same as those required for Aras Innovator and CATIA V5. For details of hardware and software requirements, please refer to the



xPLM Solution is a certified Aras Partner, providing highly qualified complementary solutions and implementation experts with focused CAD/PLM skills and experience to ensure success.



Update of Title Block

Metadata and classification properties can be exchanged and updated bidirectional. This enables the fill out of title blocks within drawings. This process can be performed automatically in the background (batch server), triggered by any process or workflow event (e.g. status transition).



J2xPLM Integration Platform

xPLM Solution's J2xPLM Integration Platform provides Aras users efficient and robust CAx and PDM integrations. The J2xPLM Integration Platform supports integration with many PDM/PLM systems, CAD systems, ERP systems, Visualization systems, ECAD systems and MS-Office.

About xPLM Solution

xPLM Solution with headquarters in Dresden develops integration solutions between industry leading CAD, PLM and ERP systems and provides deployment and support services to the PLM industry. xPLM Solution brings with them about 300 years of accumulated professional experience in the PLM market. For more than 20 years, the team has been at the forefront of developing and deploying robust, flexible, configurable and cost efficient CAD and PLM integrations. The J2xPLM Integration Platform takes advantage of the latest service-oriented technologies.

Solutions and Deployment Services

- CAD Integrations for PLM and ERP
- PLM Management Consulting
- PLM Deployment Services
- PLM Training and Documentation
- Client Project Support Services

xPLM
Solution

Experience in Product Lifecycle Management

xPLM Solution GmbH

Helgolandstr. 9, D-01097 Dresden, GERMANY
Email: xplm@xplm.com; Internet: www.xplm.com
+49 (351) 8265 821 (Phone)
+49 (351) 8265 888 (Fax)

Flyer xPLM Innovator-Catia-2008-08-10

Copyright © 2008, All Rights Reserved. xPLM, J2xPLM are trademarks of xPLM Solution GmbH. All other brands or product names are trademarks or registered trademarks of their respective holders.