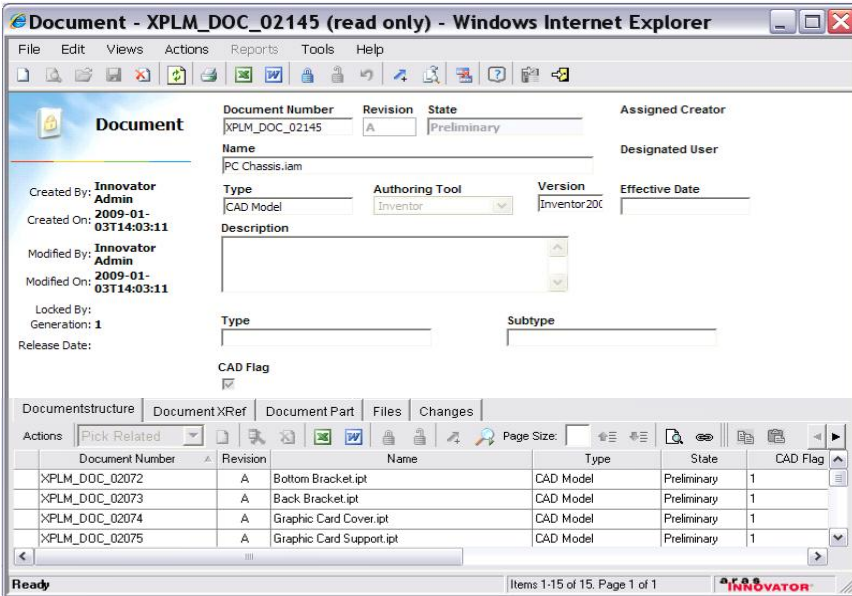


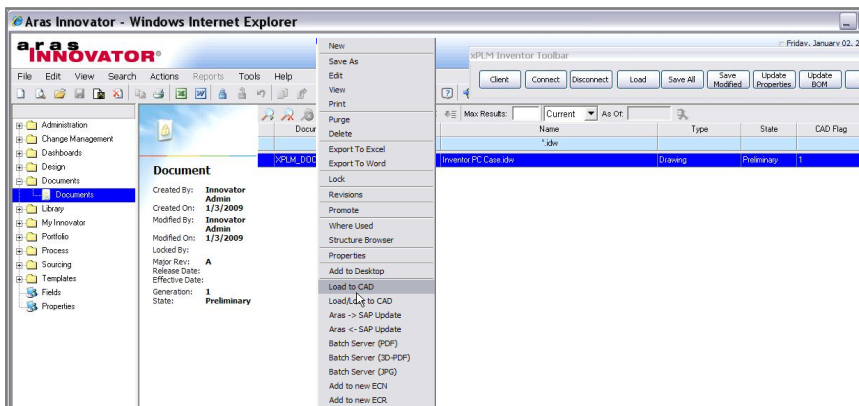
# Innovator® Integration for Autodesk® Inventor™ **xPLM Solution**

## xPLM® INTEGRATION PLATFORM

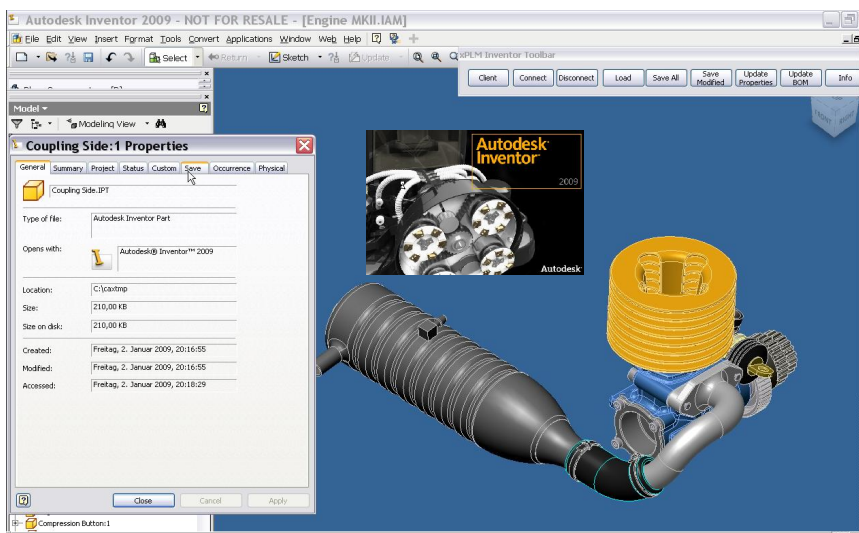
xPLM Solution's xPLM Integration Platform provides an Aras® Innovator integration for Autodesk® Inventor™ with flexible deployment options to support your engineering best practices! xPLM Solution's expertise in CAD and PLM integrations provides Aras® and Autodesk® users a robust, flexible and configurable integration.



Management of Inventor Objects within Aras Innovator



Load of AutoCAD Objects from PLM to CAD



A good integration between PLM and CAD is a prerequisite to support efficient engineering processes and drive increased innovation.

xPLM Solution presents a next generation of Cx and PDM integrations, based on their xPLM Integration Platform, for Aras Innovator and Autodesk Inventor. The Aras Innovator integration for Inventor offers Aras users an effective and intuitive integration.

Data and structures of both Aras Innovator and Autodesk Inventor are integrated providing the ability for bi-directional exchange of documents, CAD files, BOMs, parts (material masters), classification, item status and more.

Robust customization capabilities are provided yielding lower support and maintenance costs.

### Integration Capabilities

- Document & File Management
- Management of Complex CAD Structures
- Support of all relevant CAD objects
- Create and Update of Material Master & BOM
- Workflow and Release Management
- Check-in and Check-out from CAD
- Automatic Rename to Unique File Names
- Take and Release Ownership
- Management of Multiple Revisions
- Save Preview Before Final Saving
- Search and Load from Inventor or PLM
- Bidirectional Exchange of Properties
- Update PLM-Attributes from CAD
- File Conversion (e.g. Viewables)



### Update of Properties:

Metadata and classification properties can be exchanged and updated bidirectional. This enables e.g. the fill out of title blocks within drawings. This process can be performed automatically in the background (batch server), triggered by any process or workflow event (e.g. status transition).

**xPLM Integration Platform Features**

Deep Integration with Aras Innovator PLM Objects and Object Structures:

- Document and File Management, Material Master and BOM, Classification, Change and Release Management

Additional Benefits:

- Dialogs and features can be enhanced and configured specifically for users
- xPLM Integration Platform can access multiple PLM and ERP sites in parallel
- Batch processor enables file conversions and configurable bulk transfer operations (e.g. import, export, migration of data)
- Script-Based Process Definition Language
- COM Automation Support (VBA Script, Java Script, C#)
- XML definition enables creation and configuration of new integration objects (e.g. any Aras API component)

**Aras Innovator Integration for Inventor**

Integration: xPLM AAI  
 Version: AAI v 1.0.0  
 Release: December, 30<sup>th</sup> 2008

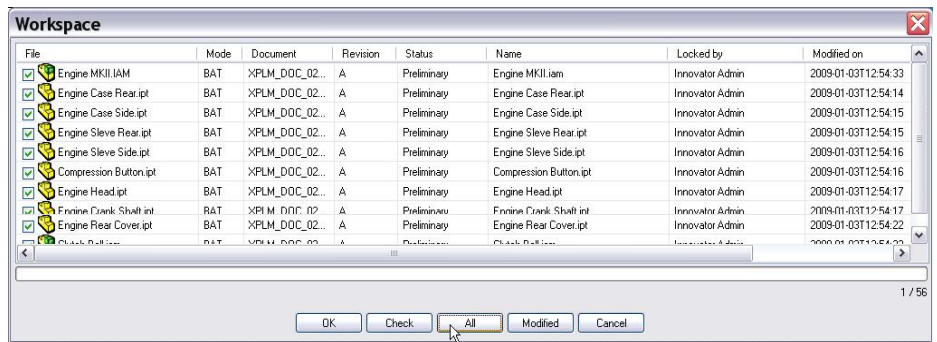
**System Requirements**

xPLM: V 1.0 or later  
 Aras Innovator: 8.2.0 or later  
 Inventor: 2008 - 2011 (32, 64 bit)

The minimum hardware and software requirements are the same as those required for Aras Innovator and Inventor. For details of hardware and software requirements, please refer to the respective CAD and PLM prerequisites.



xPLM Solution is a certified Aras Partner, providing highly qualified complementary solutions and implementation experts with focused CAD/PLM skills and experience to ensure success.



**Save Preview:** Clearly laid out save preview dialog enables users to define structure operations such as saving, versioning or copying for each Inventor structure element within the CAD system.



**xPLM Integration Platform**

xPLM Solution's xPLM Integration Platform provides Aras users efficient and robust Cax and PDM integrations. The xPLM Integration Platform supports integration with many PDM/PLM systems, CAD systems, ERP systems, Visualization systems, ECAD systems and MS-Office.

**About xPLM Solution**

xPLM Solution with headquarters in Dresden develops integration solutions between industry leading CAD, PLM and ERP systems and provides deployment and support services to the PLM industry. xPLM Solution brings with them about 300 years of accumulated professional experience in the PLM market. For more than 20 years, the team has been at the forefront of developing and deploying robust, flexible, configurable and cost efficient CAD and PLM integrations. The xPLM Integration Platform takes advantage of the latest service-oriented technologies.

**Solutions and Deployment Services**

- CAD Integrations for PLM and ERP
- PLM Management Consulting
- PLM Deployment Services
- PLM Training and Documentation
- Client Project Support Services



*Experience in Product Lifecycle Management*