

# **Aras Innovator 11**

## **Sample Database Installation Guide**

*Document #: 11.09112017022301*

*Last Modified: 2/27/2017*



# Copyright Information

Copyright © 2017 Aras Corporation. All Rights Reserved.

Aras Corporation  
300 Brickstone Square  
Suite 700  
Andover, MA 01810

**Phone:** 978-691-8900

**Fax:** 978-794-9826

**E-mail:** [Support@aras.com](mailto:Support@aras.com)

**Website:** <http://www.aras.com>

## Notice of Rights

Copyright © 2017 by Aras Corporation. This material may be distributed only subject to the terms and conditions set forth in the Open Publication License, V1.0 or later (the latest version is presently available at <http://www.opencontent.org/openpub/>).

Distribution of substantively modified versions of this document is prohibited without the explicit permission of the copyright holder.

Distribution of the work or derivative of the work in any standard (paper) book form for commercial purposes is prohibited unless prior permission is obtained from the copyright holder.

Aras Innovator, Aras, and the Aras Corp "A" logo are registered trademarks of Aras Corporation in the United States and other countries.

All other trademarks referenced herein are the property of their respective owners.

## Notice of Liability

The information contained in this document is distributed on an "As Is" basis, without warranty of any kind, express or implied, including, but not limited to, the implied warranties of merchantability and fitness for a particular purpose or a warranty of non-infringement. Aras shall have no liability to any person or entity with respect to any loss or damage caused or alleged to be caused directly or indirectly by the information contained in this document or by the software or hardware products described herein.

# Table of Contents

<b>Send Us Your Comments .....</b>	<b>2</b>
<b>Document Conventions .....</b>	<b>3</b>
<b>1 Overview .....</b>	<b>4</b>
<b>2 Prerequisites .....</b>	<b>5</b>
<b>3 Installing Aras Innovator Sample Database .....</b>	<b>6</b>
3.1 Run the ArasInnovatorSampleDB.msi File .....	6
3.1.1 <i>Welcome Page</i> .....	6
3.1.2 <i>License Agreement</i> .....	6
3.1.3 <i>Setup Type</i> .....	8
3.1.4 <i>InnovatorServerConfig.xml Location</i> .....	9
3.1.5 <i>VaultServerConfig.xml Location</i> .....	10
3.1.6 <i>Configure Database</i> .....	10
3.1.7 <i>Begin the Installation</i> .....	13
3.1.8 <i>Installation Status</i> .....	13
3.1.9 <i>Installation Completed</i> .....	14
3.2 Installing the Sample Database a Second Time .....	15
<b>4 Uninstalling Aras Innovator Sample Database.....</b>	<b>16</b>
4.1 Locating the Uninstaller.....	16
4.2 Uninstalling.....	16

## Send Us Your Comments

---

Aras Corporation welcomes your comments and suggestions on the quality and usefulness of this document. Your input is an important part of the information used for future revisions.

- Did you find any errors?
- Is the information clearly presented?
- Do you need more information? If so, where and what level of detail?
- Are the examples correct? Do you need more examples?
- What features did you like most?

If you find any errors or have any other suggestions for improvement, indicate the document title, and the chapter, section, and page number (if available).

You can send comments to us in the following ways:

**Email:**

[Support@aras.com](mailto:Support@aras.com)

Subject: Aras Innovator Documentation

Or,

**Postal service:**

Aras Corporation  
300 Brickstone Square  
Suite 700  
Andover, MA 01810  
Attention: Aras Innovator Documentation

Or,

**FAX:**

978-794-9826  
Attn: Aras Innovator Documentation

If you would like a reply, provide your name, email address, address, and telephone number.

If you have usage issues with the software, visit <http://www.aras.com/support/>

# Document Conventions

The following table highlights the document conventions used in the document:

Table 1: Document Conventions

Convention	Description
<b>Bold</b>	This shows the names of menu items, dialog boxes, dialog box elements, and commands. Example: Click <b>OK</b> .
Code	Code examples appear in <code>courier</code> text. It may represent text you type or data you read.
<b>Yellow highlight</b>	Code with yellow highlight is used to draw attention to the code that is being indicated in the content.
<b>Yellow highlight with red text</b>	Red color text with yellow highlight is used to indicate the code parameter that needs to be changed or replaced.
<i>Italics</i>	Reference to other documents.
<b>Note:</b>	Notes contain additional useful information.
<b>Warning</b>	Warning contains important information. Pay special attention to information highlighted this way.
Successive menu choices	Successive menu choices may appear with a greater than sign (-->) between the items that you will select consecutively. Example: Navigate to <b>File --&gt; Save --&gt; OK</b> .

# 1 Overview

---

This document will walk through how to install the Aras Innovator Sample Database into an existing instance of Aras Innovator 11.0 SP9. This database is intended only for demonstration purposes, and it should not be used as the basis of a production environment.

## 2 Prerequisites

---

The sample database is dependent on the Aras Innovator platform requirements. Before installing this demo instance, you will need to complete the installation of Aras Innovator.

---

**Warning** Do not attempt to use this installer on a production server running Aras Innovator. This installer will make modifications to the existing instance, and these changes should not be applied to a production instance of Aras Innovator

---

The following requirements must be met before installing the sample database to an existing instance of Aras Innovator:

- 1) Aras Innovator 11.0 SP9 must be installed
- 2) The Database Server, Vault Server, and Innovator Server must be installed on the same machine.

This document assumes that all platform requirements for running Aras Innovator on the client and server have been met previously when Aras Innovator was installed.

## 3 Installing Aras Innovator Sample Database

### 3.1 Run the ArasInnovatorSampleDB.msi File

Double click on the file `ArasInnovatorSampleDB.msi` to start the Aras Sample Database Installer.

#### 3.1.1 Welcome Page

The first screen of the Installer is shown below. Click **Next** to proceed or **Cancel** to exit setup.

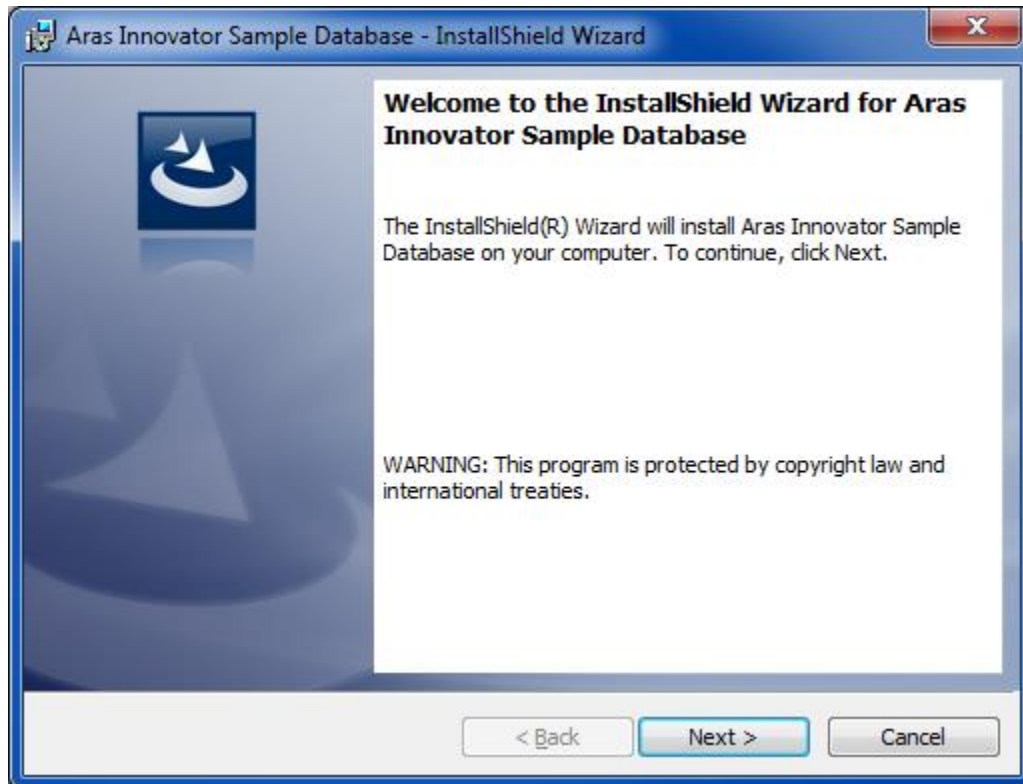


Figure 1.

#### 3.1.2 License Agreement

Make sure that you read the license agreement carefully before agreeing and proceeding with the install.



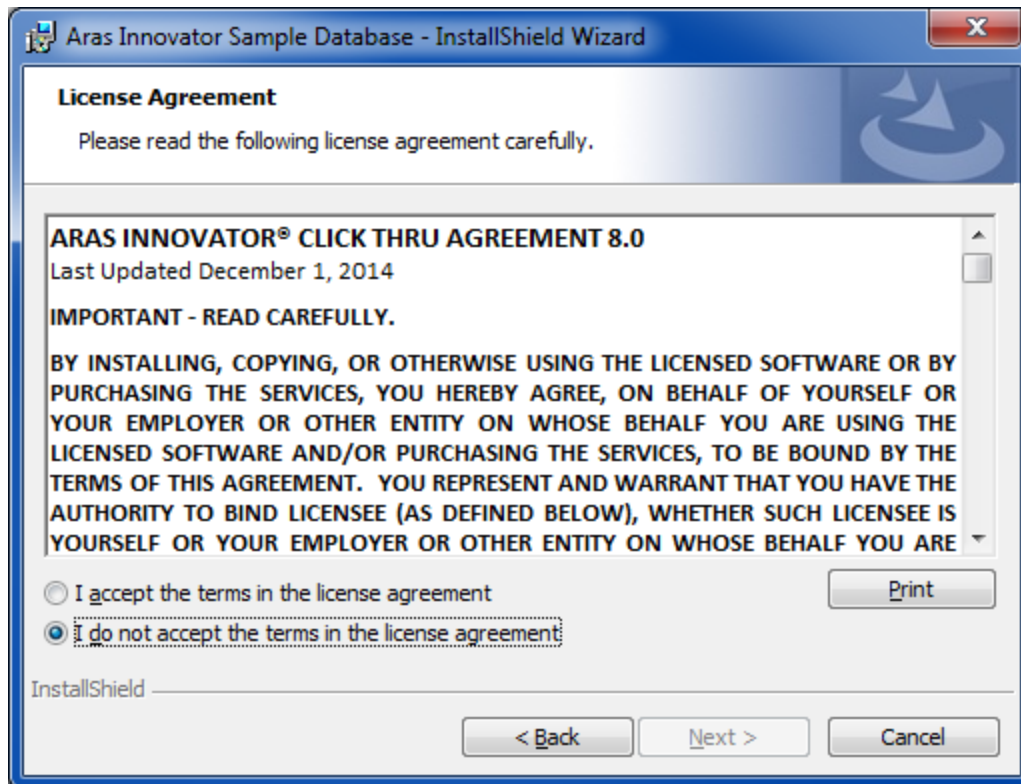


Figure 2.

This screen allows you to print the license agreement using a rich text editor, such as WordPad, by clicking **Print**. The **Next** button remains disabled, until the **I accept the terms in the license agreement** option is selected.

1. Click **Next** to proceed with installation.
1. Click **Back** to return to the previous screen.
2. Click **Cancel** to exit setup.

### 3.1.3 Setup Type

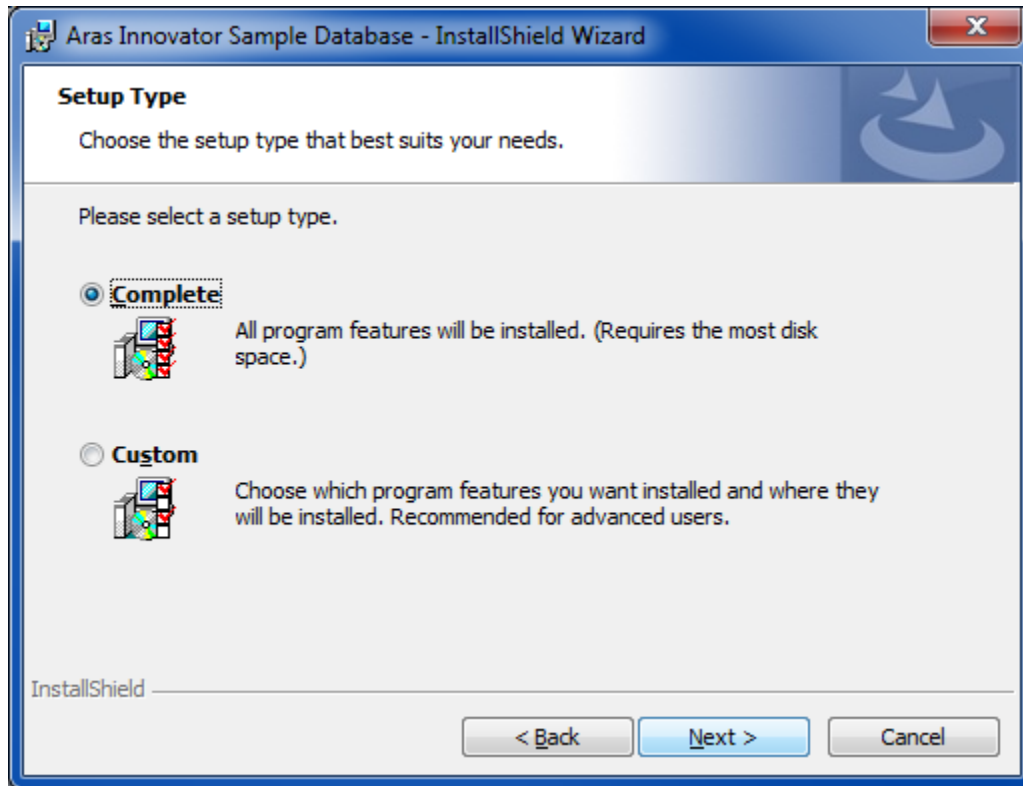


Figure 3.

Select the **Complete** option for installation.

- **Complete:** This option installs the sample database and vault.
- **Custom:** This is not required, as both the database and vault must be installed at the same time..
  - Click **Next** to proceed with installation.
  - Click **Back** to return to the previous screen.
  - Click **Cancel** to exit setup.

### 3.1.4 InnovatorServerConfig.xml Location

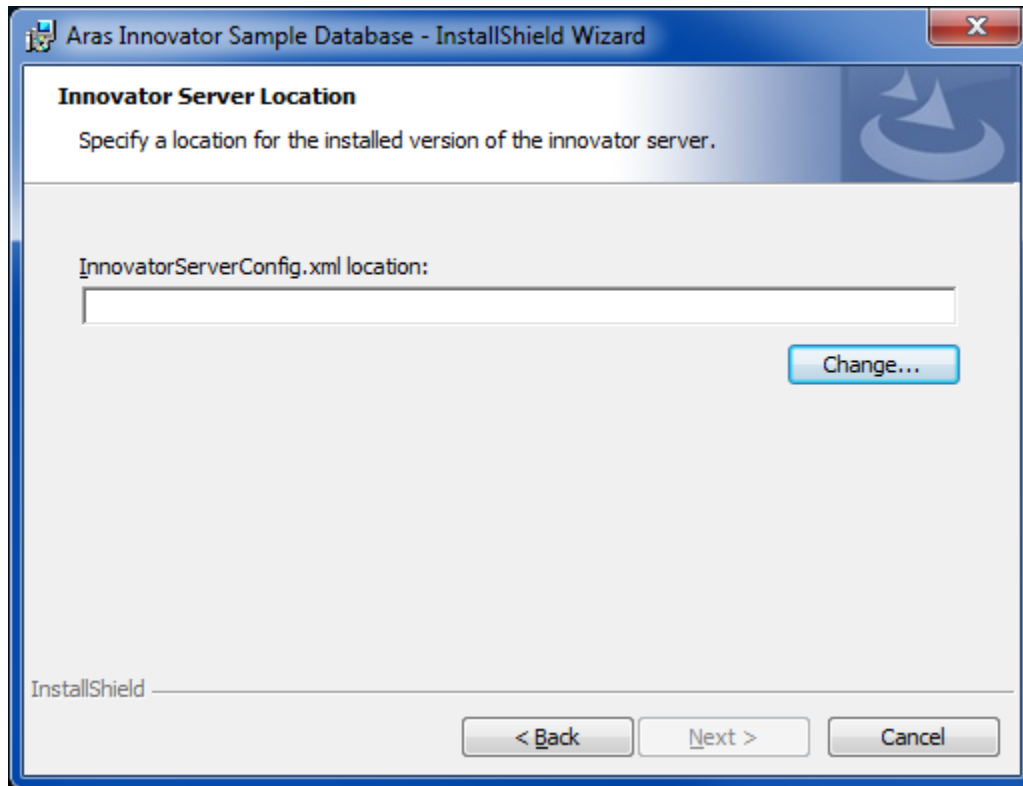


Figure 4.

The installer requires you to specify the path to the InnovatorServerConfig.xml. This file can be found in the root of the Aras Innovator installation. This will be used to validate your installation, and enable the database connection string for use during login after the installation completes.

- Click **Next** to proceed with installation.
- Click **Back** to return to the previous screen.
- Click **Cancel** to exit setup.

### 3.1.5 VaultServerConfig.xml Location

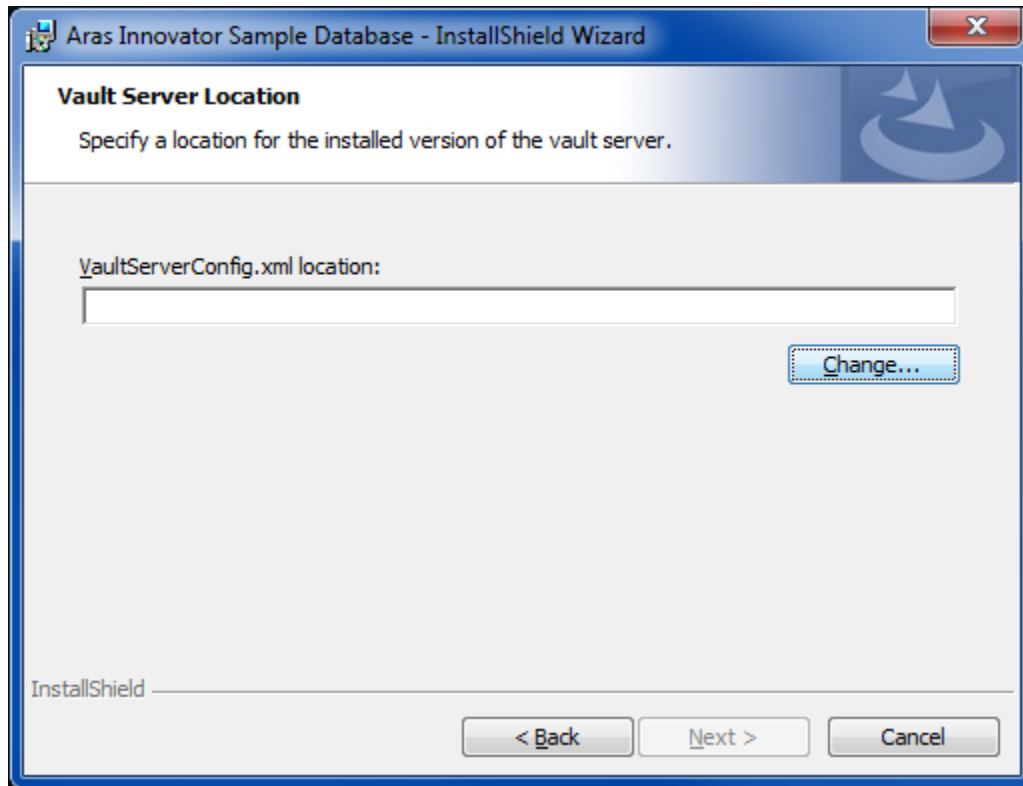


Figure 5.

The installer requires you to specify the path to the VaultServerConfig.xml. This file can be found in the root of the Aras Innovator installation. This will be used to install the sample files into the Vault Server.

- Click **Next** to proceed with installation.
- Click **Back** to return to the previous screen.
- Click **Cancel** to exit setup.

### 3.1.6 Configure Database

This screen allows you setup one or more Aras Innovator databases. You must have SQL Server Authentication enabled on your Microsoft SQL Server instance to install and run Aras Innovator.

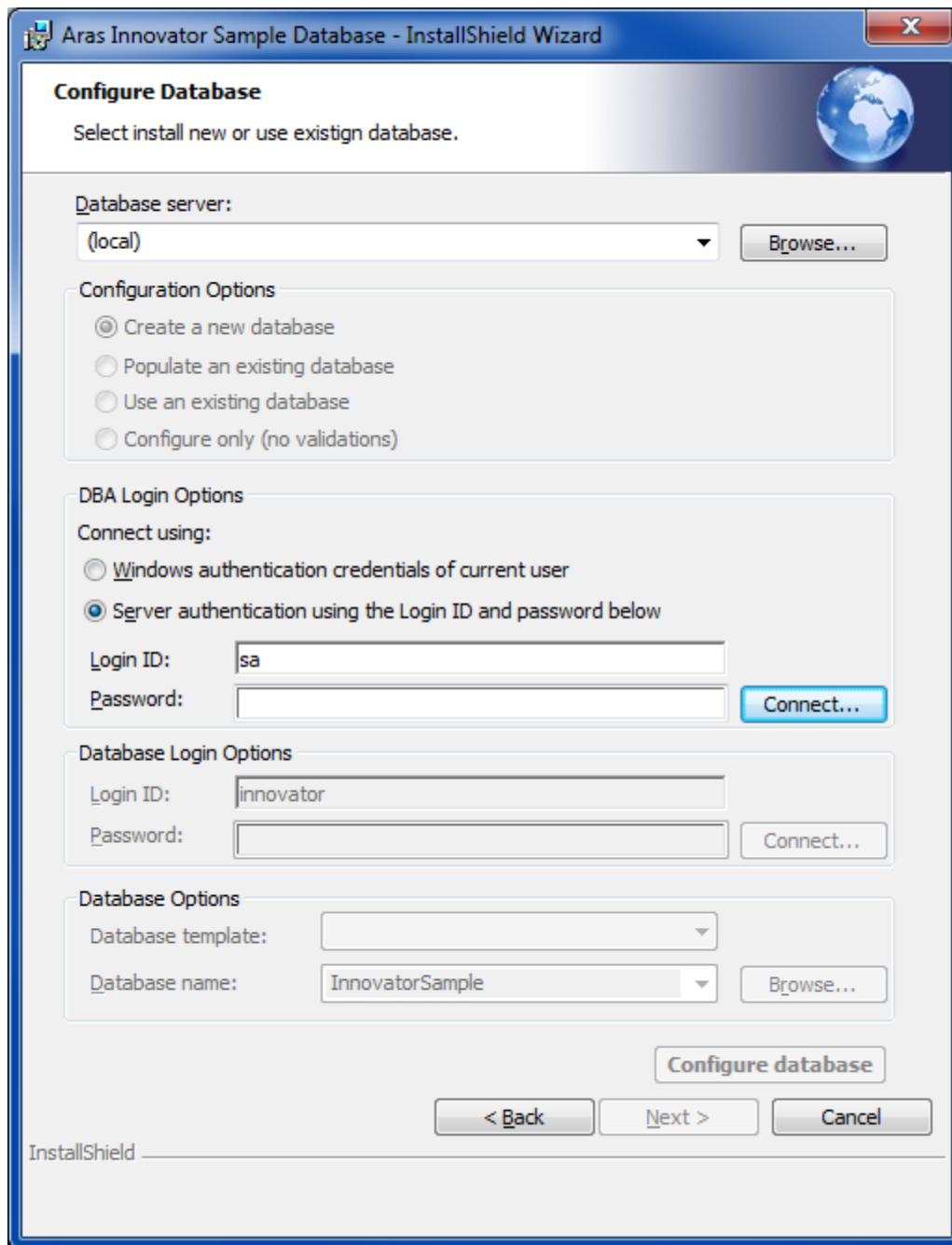


Figure 6.

- **Database Server** – This refers to the SQL Server instance you wish to install to. By default this is set to the first available SQL Server instance on the local machine, but can be set to any valid SQL Server Registration instance. To set this value, simply key in the name of a known instance or select 'Browse...' to see what SQL Server registrations the installer recognizes as available.
- **Configuration Options** – This is the method by which you choose to install the Aras Innovator database. At this time, only creating a new database is available.
- **DBA Login Options** – In order to install a database, we must first connect to the database server. There are two methods of establishing a connection to the database server.

- Windows Authentication – Connect to SQL server as the current logged in user.
  - SQL Server Authentication – Connect as the SQL Server Administrator
    - **Login ID** – the login of the DBA with permissions to create new databases. Check with your system’s DBA what this parameter should be.
    - **Password** – the password for the login used to create the database. Again, check with your system’s DBA what this parameter should be.
- You need to click ‘**Connect...**’ once the login details are provided. This allows the installer to confirm connection to the SQL Server instance before proceeding further.
- **Database Login Options – Create a new database** also creates the *innovator* database user and the SQL Server login defined in this section of the Configure Database screen with privileges as a database owner of the database created. The *innovator* database user must be the database owner in MS SQL Server and does **NOT** use the SA login to log into the database.
    - **Login ID** - This is the login that is used by the *innovator* database user. The installer maps this login to the *innovator* database user after the *innovator* database user is created. The installer creates the *innovator* database user with rights as a database owner. This user is used to create all Aras Innovator objects in the database. *Do not use the SA login.*
    - **Password** - You need to specify the password for the database user login that is configured.
  - **Database Options** – The name and type of database to be installed.
    - **Database Template** – The installer will use a database template base on the InnovatorSolutions template used by the Aras Innovator installer.
    - **Database Name** - Specify the name you wish your new Aras Innovator SQL Server database to be called or accept the default name provided.

When all fields are complete, click **Configure Database** to install the database.

**Note:** The **Next** button is enabled only after you complete the database installation and configuration. You must configure at least one database before proceeding with the installation.

### 3.1.7 Begin the Installation

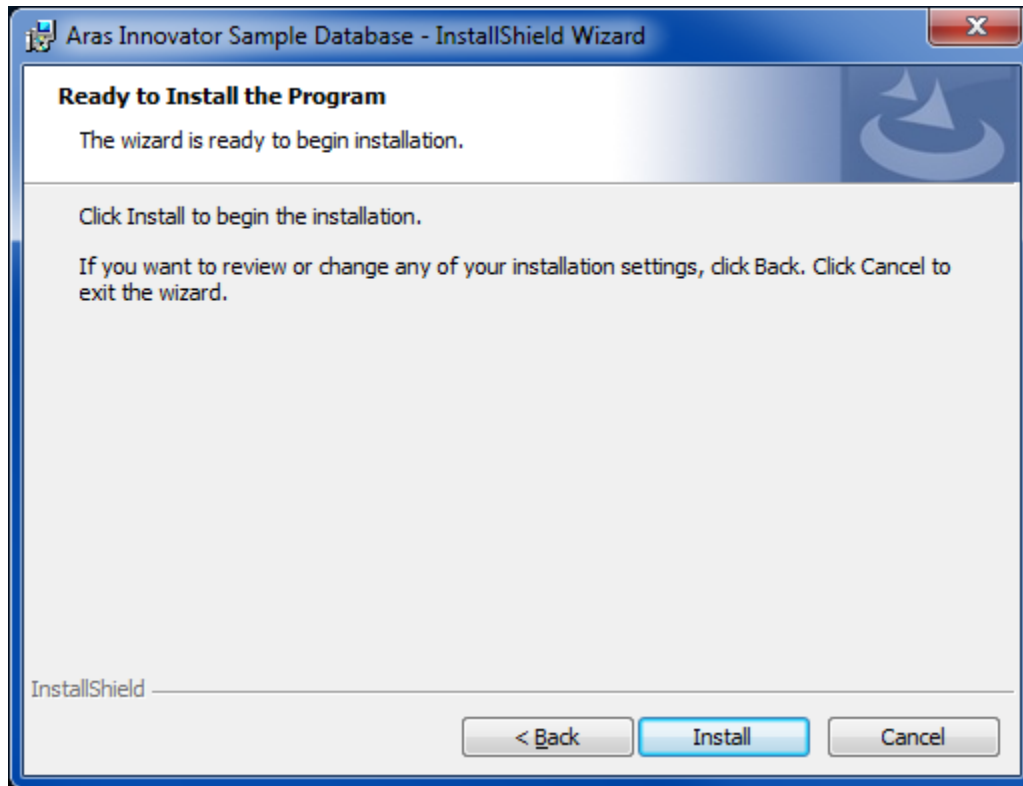


Figure 7.

This screen is displayed next, whether you chose **Custom** or **Complete** Install. Click **Install** to start the installation of the features.

---

**Warning** You no longer can make any changes, once you click **Install** on this screen.

---

### 3.1.8 Installation Status

This screen shows the installation status.  
Click **Cancel** to exit setup.

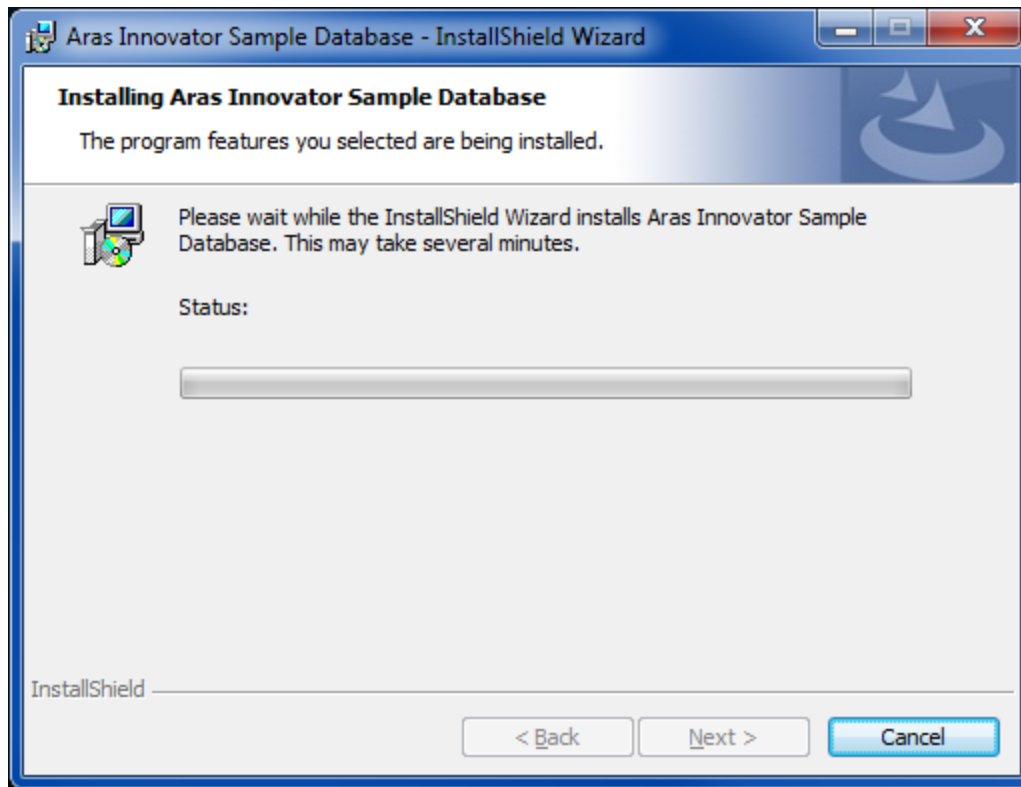


Figure 8.

### 3.1.9 Installation Completed

The screen below is the last in the installation wizard.



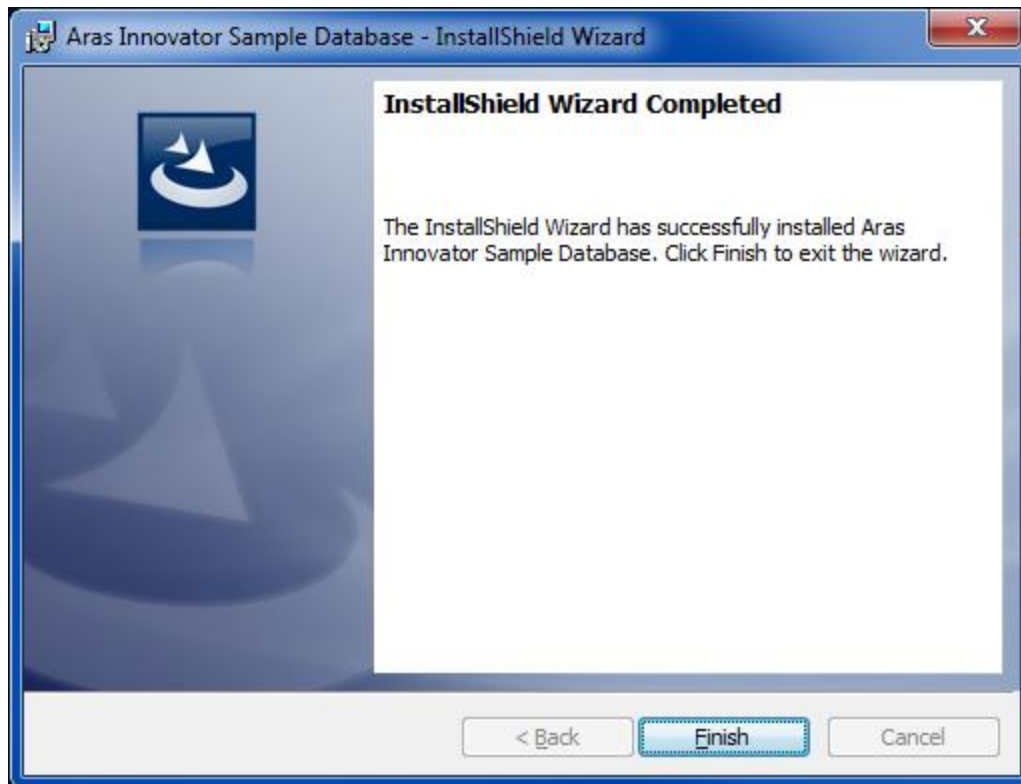


Figure 9.

Click **Finish** to complete the installation process and close the installer.

**Note:** Unlike Aras Innovator, this installer cannot be run multiple times. If you want to run the installer a second time, you will need to first remove the existing installation.

## 3.2 Installing the Sample Database a Second Time

When executing the installation, the database screen gave the option to install multiple instances of the sample database. If more instances are required after the installation completes, then the existing installation must be removed first. Removing the existing installation will not delete the sample database or the vaulted files. Removing the installation will simply reset the status of the installer so that the installer can be run again.

## 4 Uninstalling Aras Innovator Sample Database

The installer does not actually install any software, but rather just installs sample data into an existing Aras Innovator instance. When the Aras Innovator Sample database is removed from the programs and features no files will actually be removed from the server. The database and vaulted files will need to be manually deleted if they are no longer required.

### 4.1 Locating the Uninstaller

1. From the **Start Menu**, go to the **Control Panel**.
2. Select **Programs and Features**.
3. From the list, select **Aras Innovator Sample Database**

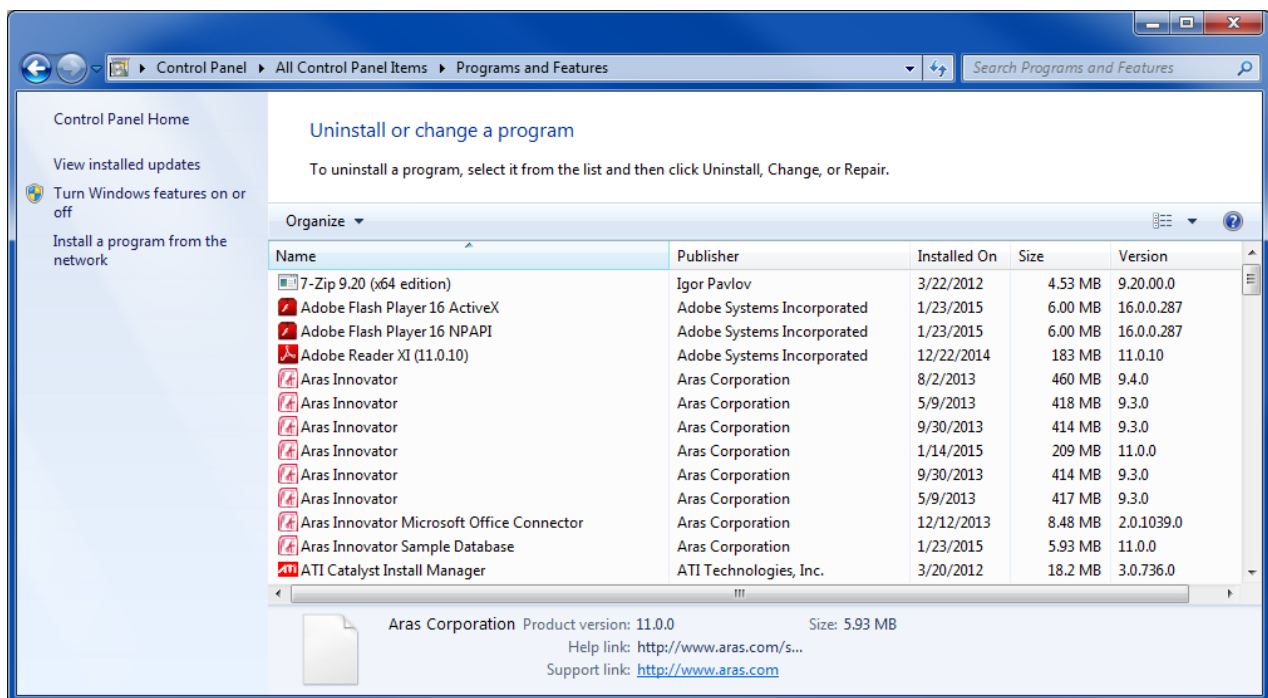


Figure 10.

4. Click **Uninstall** to begin the uninstallation process.

### 4.2 Uninstalling

When Uninstaller starts, the screen shown in the below figure is displayed.

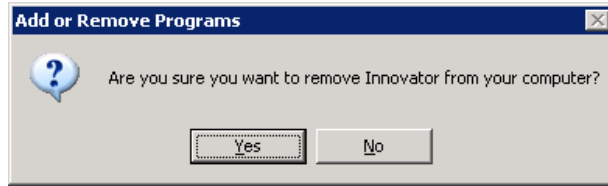


Figure 11.

1. Click **Yes** to proceed with the uninstallation process.
2. Click **No** to exit the Uninstaller.

The status of the Uninstallation process is displayed on the screen.

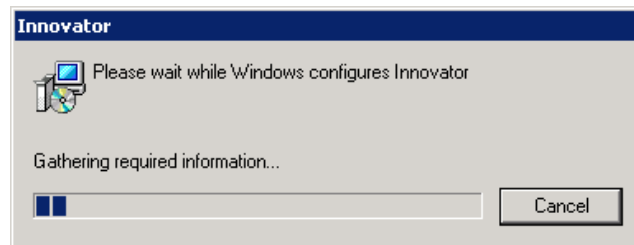


Figure 12.

3. Click **Cancel** to exit the Uninstaller.

At this point, the Aras Innovator Sample database has been removed from the programs and features no files will actually be removed from the server. This will allow a second sample database to be installed, or the existing database and vaulted files will can be manually deleted if they are no longer required.