

Realizing an Enterprise-Wide PLM Vision



Historic Overview



1905 Buick is formed

1906 Jackson, Church & Wilcox Co. is formed
1909 Jacox is purchased by Buick

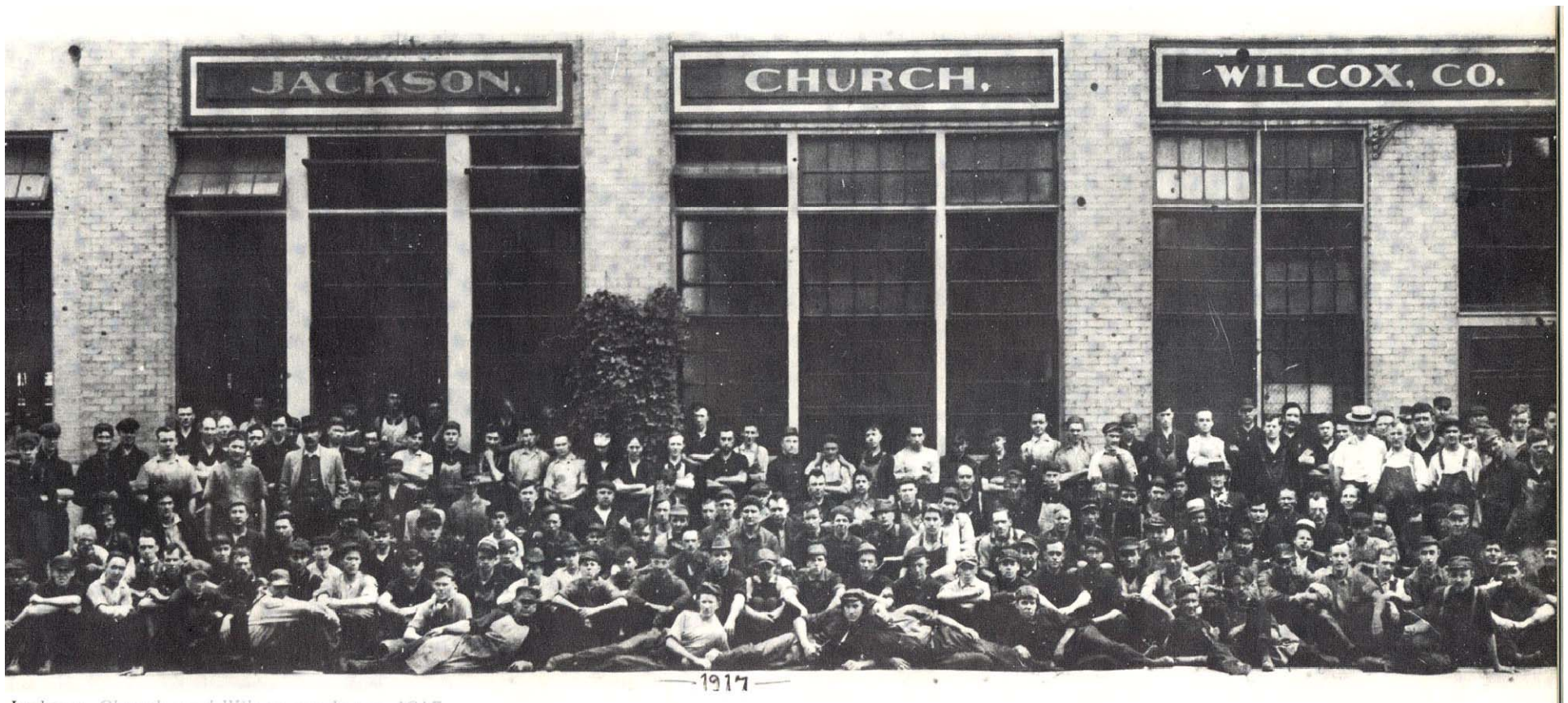


Jacox a “Division” of GM



1913 Buick is part of GM

1917 Jacox becomes GM's first Parts Division



Jackson, Church and Wilcox employees, 1917

Saginaw Steering Gear



1928 name changes to SSG

SAGINAW STEERING GEAR DIVISION
GENERAL MOTORS CORPORATION



General Motors

Delphi Automotive Systems



1999 Delphi separates from GM

DELPHI STEERING

2006 Centennial

DELPHI STEERING

A Proud Past...

Building a Strong Future

100 YEAR ANNIVERSARY

Nexteer Automotive



**2009 Delphi Automotive sells
Steering Division back to GM**

**Business renamed "Nexteer
Automotive"**



Pacific Century Motors (PCM)

**November, 2010 GM Sells
Nexteer Automotive to Pacific
Century Motors**

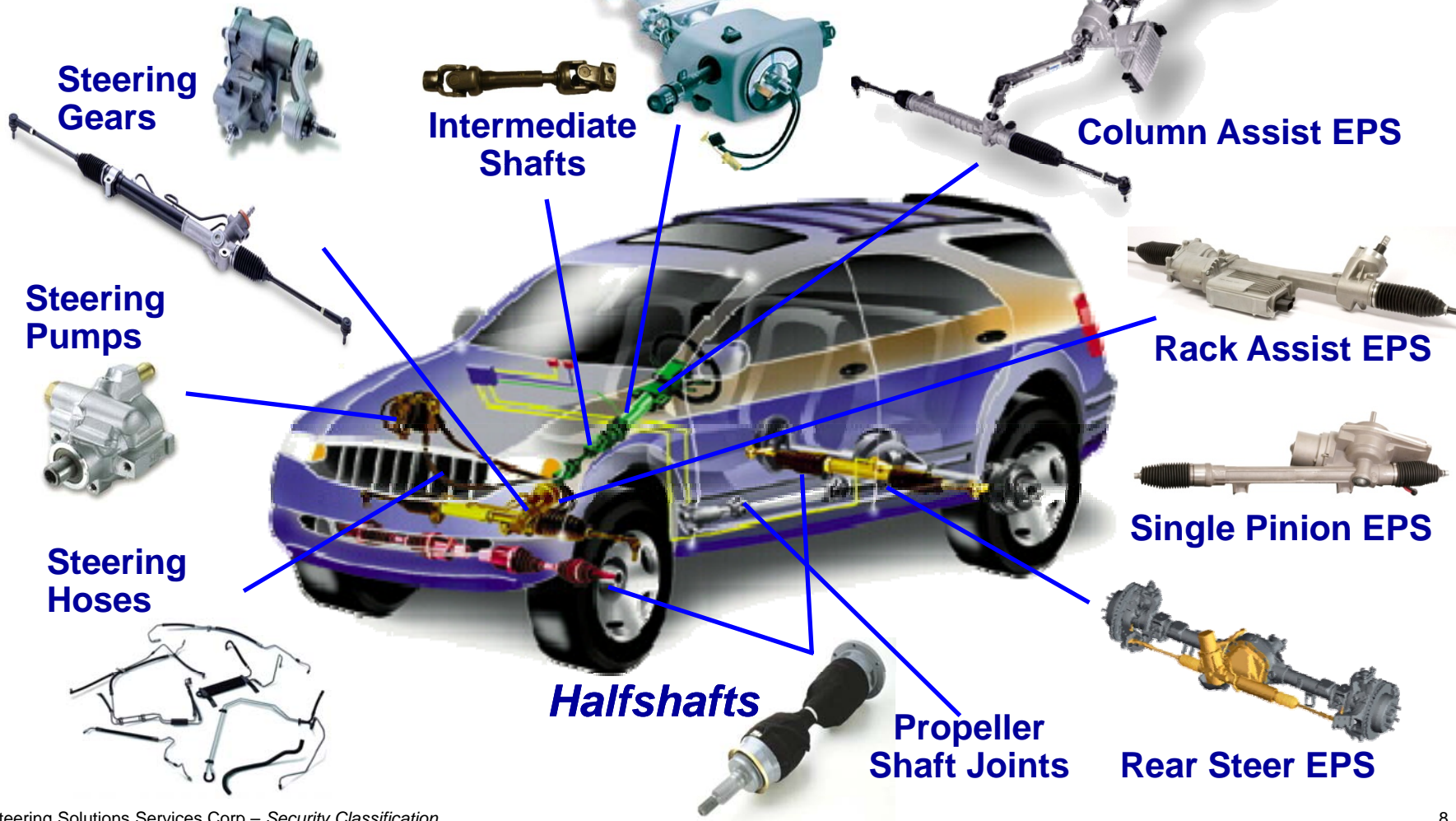
Product Technologies



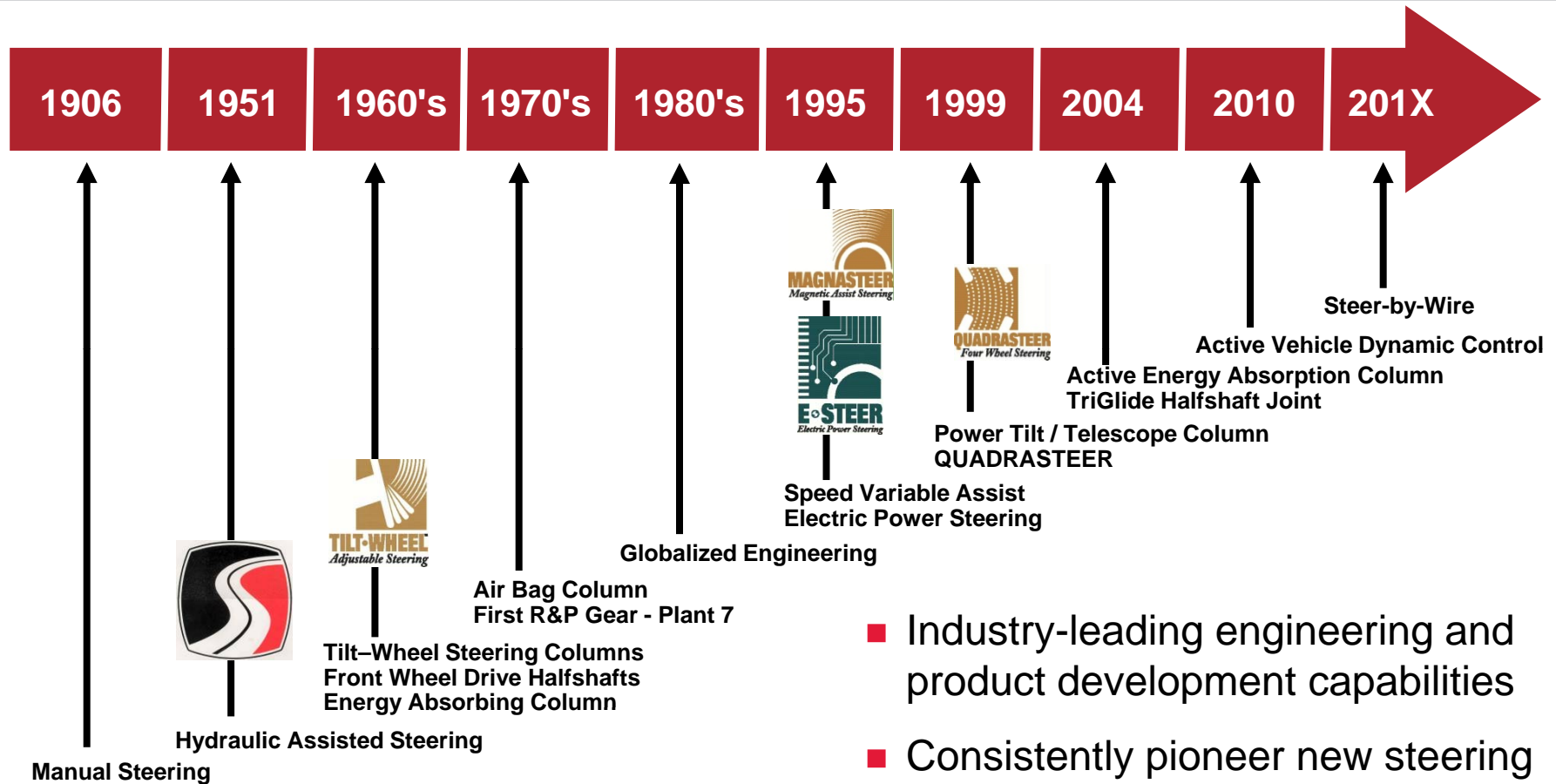
Hydraulic Steering Systems

Steering Columns

Electric Steering Systems



Over 100 years of Innovation

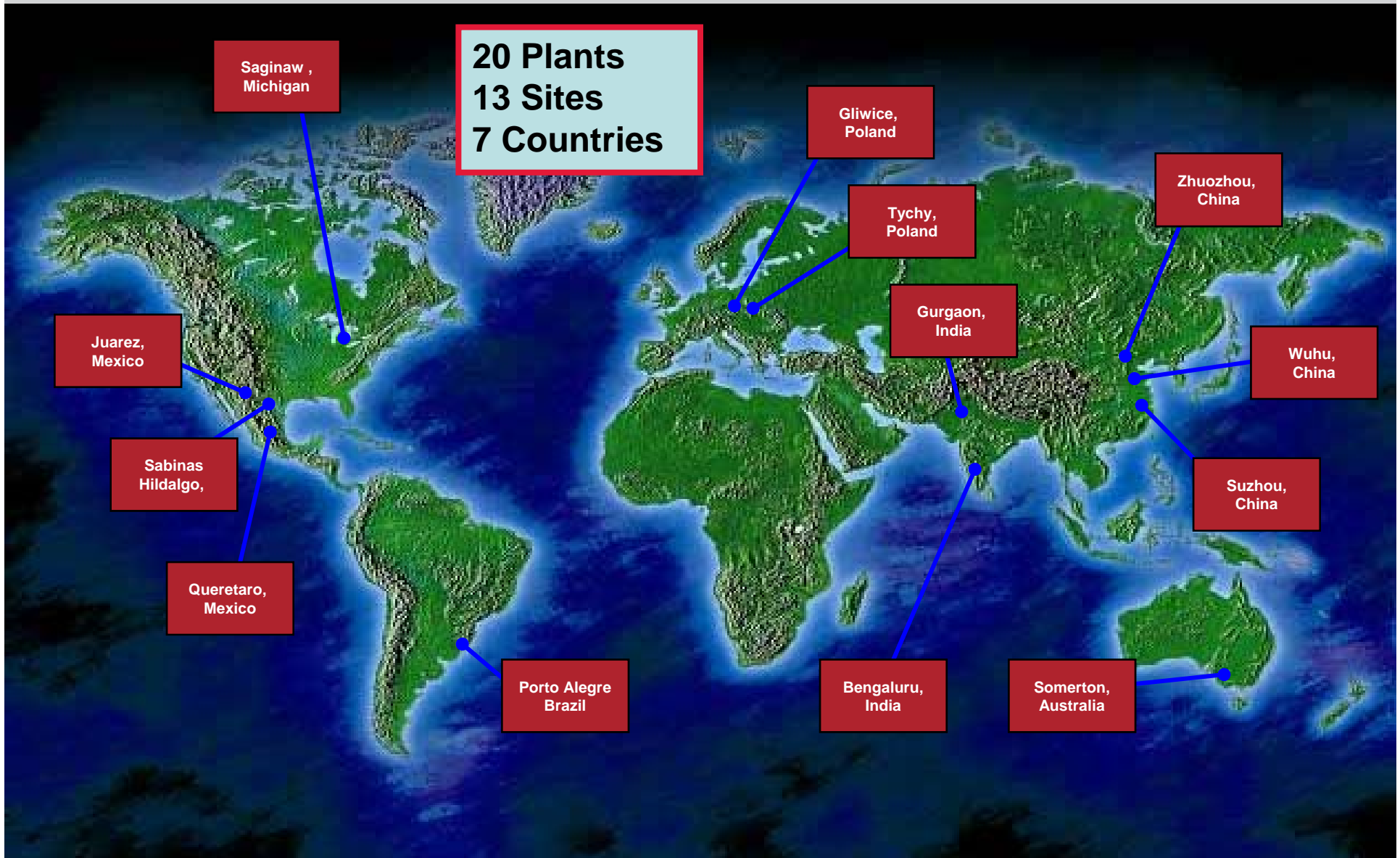


- Industry-leading engineering and product development capabilities
- Consistently pioneer new steering technologies that enhance safety, fuel efficiency, comfort and convenience

Global Engineering & Customer Support



Global Manufacturing



New Focus Required



- Nexteer now on its own – no more “mothership”
- We are re-defining our company vision, strategies, goals



Can our current business information systems support this vision?

Nexteer Business Applications - Current State



- Stand-alone applications – islands of automation
- Redundant data entry
- Lack of synchronization
- Excel / eRooms / Google sites / Access databases



■ Investigated options to replace Configuration Management automation tool

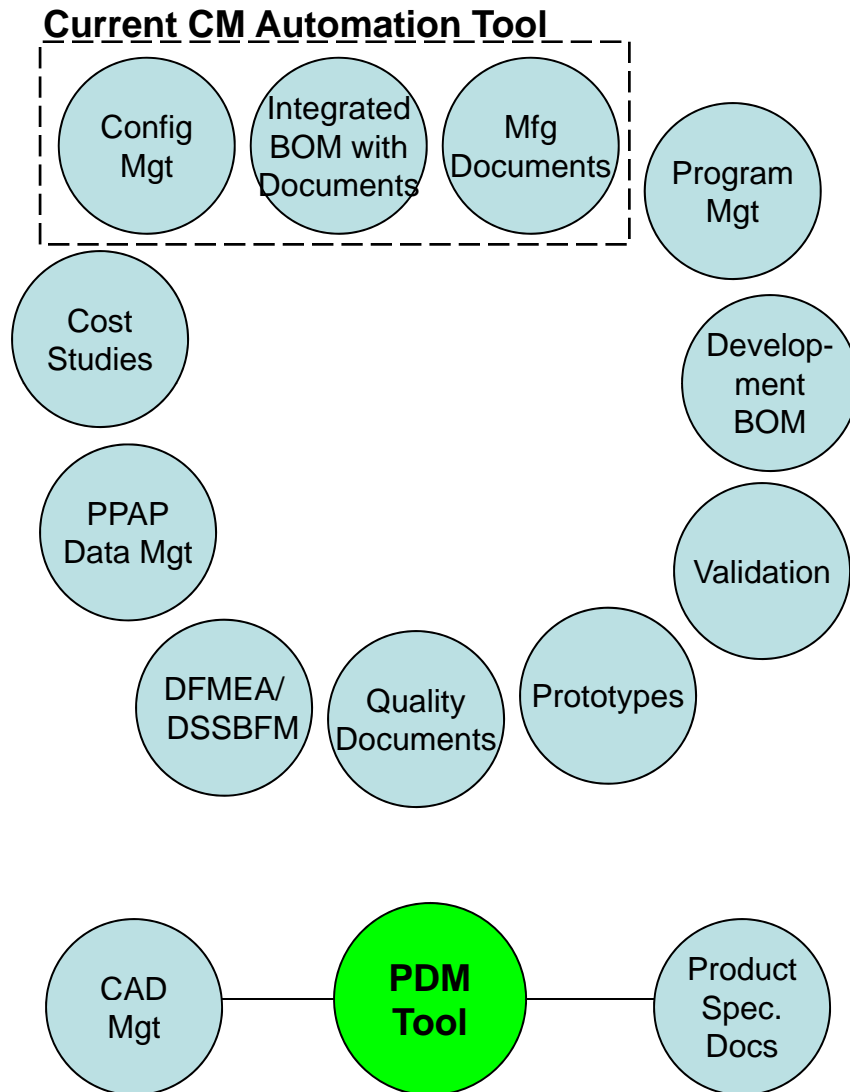
■ CM automation tool (original state)

- License costs – based on Delphi size
- Extensive customized code
- Approaching end of vendor support
- Delphi infrastructure support
- Reliance on IT for changes

■ CM automation tool (desired state)

- License costs – much smaller company
- Highly configurable
- Less reliant on vendor support
- Nexteer infrastructure support
- Functional areas play larger role

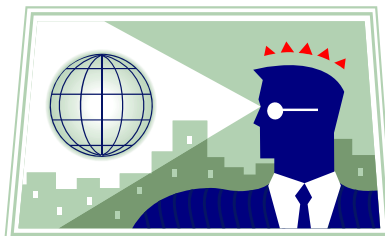
Investigate CM Tool Replacement – Team Objectives



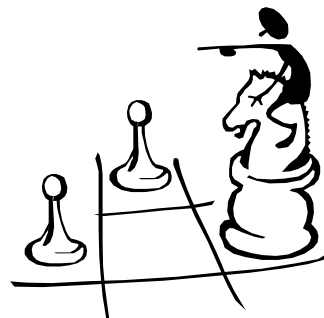
- Joint Engineering / IT / Program Mgt activity – began January 2009
- Evaluate software to replace current functionality
 - “Out of the box” with minimal custom code
 - Configurable
 - Intuitive user interface
 - Can integrate with PDM Tool
- Additionally, determine if software can support:
 - Program Management
 - Development BOM
 - Cost Studies
 - Prototype Builds
 - Other PLM functionality

Leading Change - By John Kotter

- **Vision** – sensible and appealing picture of the future
- **Strategies** – logic for how the vision can be achieved
- **Plans** – specific steps and timetables to implement the strategies
- **Budgets** – plans converted into financial projections and goals



Vision



Strategies



Plans



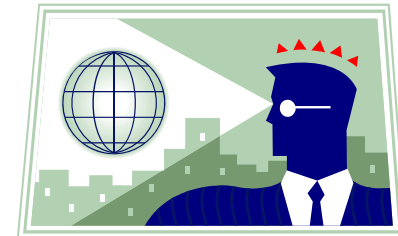
Budgets

Developing a PLM Vision



Leading Change - By John Kotter

■ 6 characteristics of effective visions



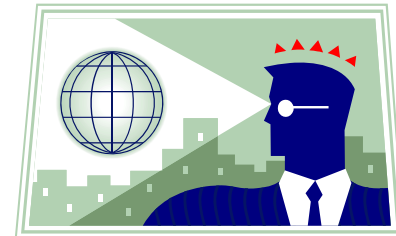
Vision

- **Imaginable** – conveys a picture of what the future will look like
- **Desirable** – appeals to the long term interests of stakeholders
- **Feasible** – comprises realistic, attainable goals
- **Focused** – clear enough to provide guidance in decision making
- **Flexible** – general enough to allow individual initiative and alternative responses in changing conditions
- **Communicable** – easy to communicate, can be explained in 5 minutes

Nexteer's PLM Vision Statement



Nexteer is an enterprise that uses systems as a strategic business approach to drive global common business processes using common global data.



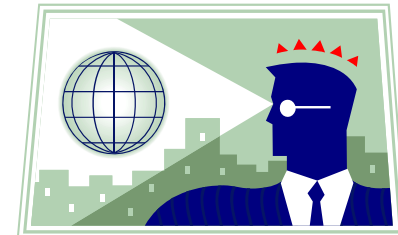
Vision

Nexteer's PLM Vision



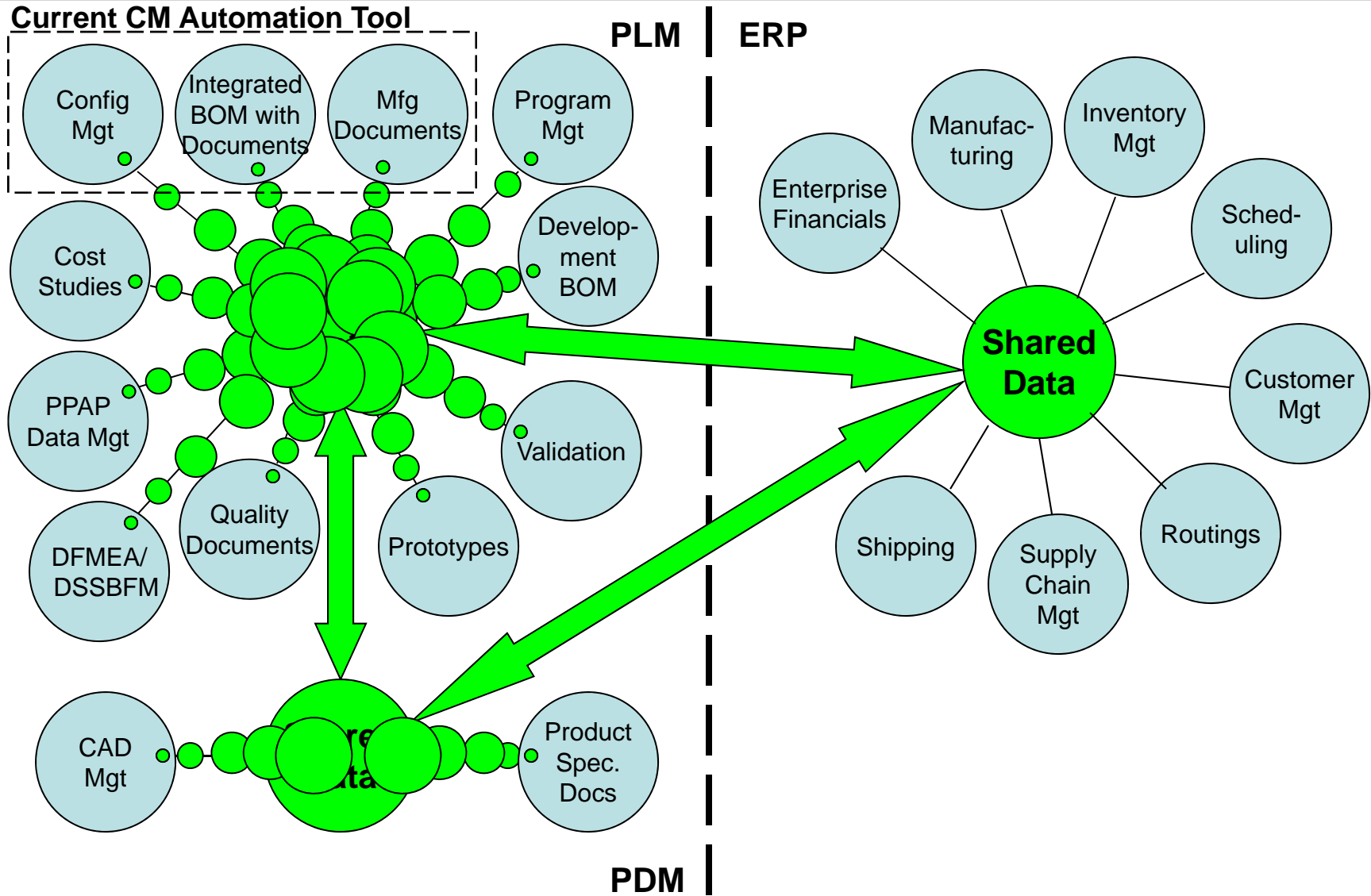
Nexteer's PLM system:

- Be easy for global users to learn and use
- Use a configurable web interface
- Be flexible, configurable, and scalable
- Be recognized by people as an effective way to perform their jobs, providing value and productivity to the enterprise
- Improve the accuracy, availability and control of information throughout the Nexteer Business System product lifecycle
- Be configured to allow integration of future business acquisitions or the removal of divested business data



Vision

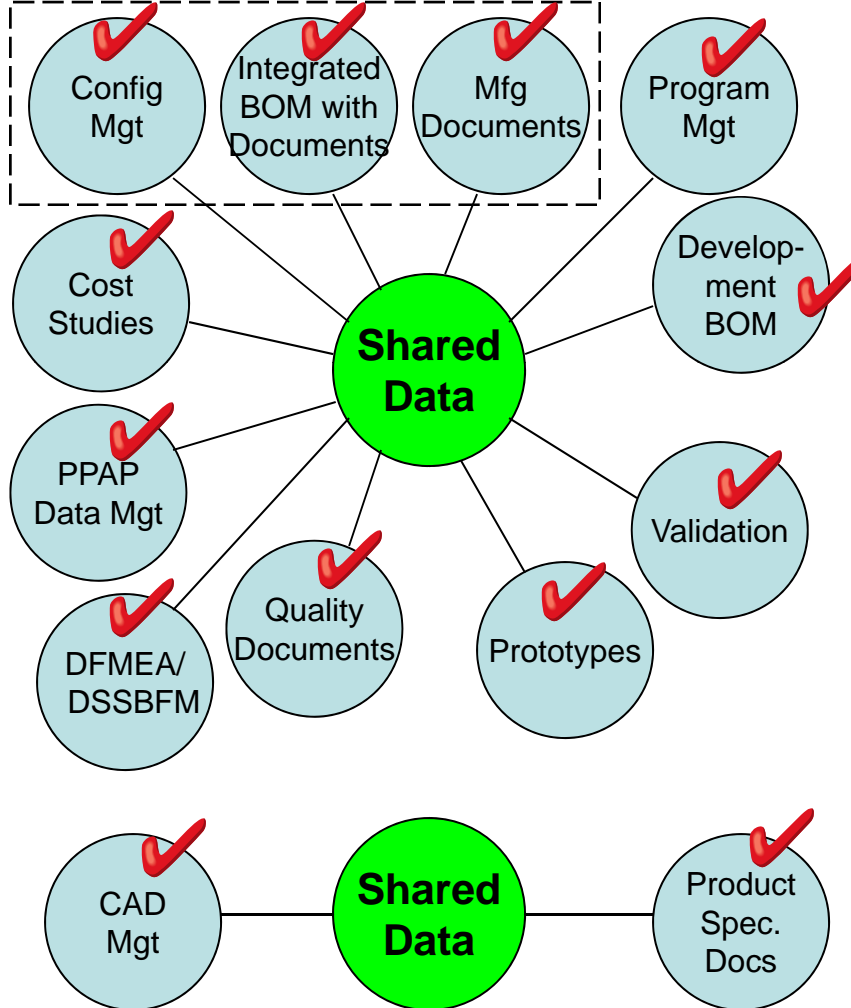
Nexteer's PLM Transformation



Aras Innovator Fits the Nexteer PLM Vision



Current CM Automation Tool



Current Aras Innovator Modules

- Program Management
- Product Engineering
- PDM
- CMII
- RoHS
- Quality Planning
- APQP
- LEAN Product Development

+ Open Source Industry Developed Solutions

+ Nexteer Developed Solutions as Needed

Contact Information



Bob Lipscomb, CMfgE, CMIIC
Sr. Manufacturing Engineer
Nexteer Automotive Systems
3900 Holland Road
Saginaw, MI 48601



Phone: 1 - (989) 757-4570

E-Mail: robert.lipscomb@nexteer.com

Linked In: <http://www.linkedin.com/in/boblipscomb>

Realizing an Enterprise-Wide PLM Vision

