



Solutions for Performance Driven Companies



MODEL-BASED SOA  
technology

## Aras Community Newsletter -- July 2008

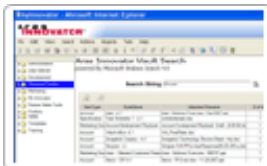
www.aras.com -- Share with friends & colleagues >> Forward this email

### in this issue

- FEATURED PROJECT - Microsoft Enterprise Search
- PARTICIPATE - Expand Search Across Proprietary CAD & EDA Formats
- AWARD - Aras Named to Supply & Demand Chain Executive 100
- PARTNERS - New Partners Welcomed to the Community
- UPCOMING - Training Sessions
- Recent Downloads

The summer heat is here and we're trying to help out with some cool new solutions. We've highlighted a super cool (and useful) one... the ultra fast Enterprise Search... but that's just the tip of the iceberg! There's an ever expanding series of community solutions for Aras Innovator. [Check 'em out!](#)

### FEATURED PROJECT - Microsoft Enterprise Search



-----  
An exciting new community solution for Aras Innovator has been posted on the Project site!

The solution integrates the latest Windows Search technology into the Aras Innovator vault server providing lightning fast, full text searches on all of the files in the vault.

In a fraction of a second you can search hundreds of thousands of parts, BOMs, drawings, data sheets, specifications, projects, suppliers, quality data, and more.

Results come back in milliseconds and are subject to the security access of the user conducting the search. In other words, users only see the results that they have permission to see.

This solution is based on the next generation Microsoft enterprise search capabilities [[FREE download from Microsoft](#)] with the fastest performance available.

Simply load onto the Windows Server that's running Aras Innovator and you've got it. Windows Search includes support for a wide variety of languages including Chinese, French, German, Korean, Russian, Spanish, and a whole bunch more.

Now, you can find critical information practically instantaneously using Aras Innovator... it's faster than you can type!

[Check it out! >> Download Here](#)

### PARTICIPATE - Expand Search Across Proprietary CAD & EDA Formats

-----  
The next step for the Search project is to expand the coverage to include all of the proprietary CAD & EDA formats. The solution uses the Microsoft Office SharePoint search technology called an IFilter which currently can index over 200 types of items (including HTML, XML, source code files, Word docs, Excel spreadsheets, and a lot of other file types).

The Microsoft IFilter search technology is completely extensible. Filter add-ins access and parse data in non-plaintext, proprietary formats like CAD and EDA files. Many IFilters for different CAD and EDA file formats already exist. We need your help to locate them all. **Send us links!**

[Find IFilters for CAD & EDA >> Participate & Help!](#)

## **AWARD - Aras Named to Supply & Demand Chain Executive 100**



Today, Aras was selected by Supply & Demand Chain Executive magazine as one of the Top 100 leading enterprise software solution providers globally!

The award recognizes Aras for having the most advanced enterprise PLM solution available and for delivering measurable business results at companies of all sizes.

We're proud to have received this honor, and we want to thank all of you that have contributed over the past year. Your involvement and inputs have driven true innovations that are now being used by thousands of people around the world.

## **PARTNERS - New Partners Welcomed to the Community**

Last month we announced a series of updates to the Aras Partner Program, and this month we'd like to welcome a number of new partners!

[AESSiS](#) - AESSiS works with companies in the UK to improve engineering process effectiveness and increase productivity through enterprise PLM deployment and systems integration.

[DataSquare](#) - DataSquare provides full service enterprise PLM solution implementation and systems integration services to companies with complex products and processes across Central Europe.

[ICP Solution](#) - ICP Solution is a leading provider of product lifecycle management solution deployment services and packaged CAD connector integration products offering a one-stop-shop approach for PLM.

[Matrix Applied Computing](#) - For over 20 years Matrix has provided solutions for engineering design and information management throughout the Asia-Pacific region to support the innovation process via the application of technical computing.

[usb GmbH](#) - usb provides extensive consulting expertise in Product Data Management and Configuration Management for aerospace and defense, automotive and high-tech firms throughout Western Europe.

## **UPCOMING - Training Sessions**

Aras training sessions provide you and your team with the education needed for success with the Aras Innovator solutions on your company's strategic initiatives.

Sessions combine hands-on exercises, overview presentations, and discussions to provide an in-depth understanding of the Aras solutions.

Space is limited so make plans & register now.

**Upcoming Training Sessions** - Boston, MA

Aug 18 - Aras Innovator Administration

Aug 20 - Aras Innovator Workflow

Aug 21 - Aras Innovator Developer & API

Sept 16 - Aras Product Engineering

Sept 17 - Aras Program Management

Sept 18 - Aras Quality Planning

Sept 22 - Aras Innovator Administration

Sept 24 - Aras Innovator Workflow

Sept 25 - Aras Innovator Developer & API

[Learn More >>](#) [Register Now](#)

## Recent Downloads

---

2KMM sp. z o.o.	ITRI
ACA Digital	Jokari/US Inc.
ADIB	Keenline
Advatech Pacific, Inc.	Kolcraft
AESSIS	LANIT
Alcoa	MICO
Allen Vanguard	Minerva
Ansaldo STS	Mitac International Corp.
AP Driveline Technologies Ltd.	Navistar, Inc.
ATEK	Nottingham University, UK
Audient	Nutek Corp.
BBS Telecom	Nuvera Fuel Cells
BCS	Peralex Electronic
Cardinal Health	Peterson Pacific
Cirtec Ltd.	PLMteam GmbH
COMPAL	Project Synergy
Compsoft	Razorleaf
CSC	RICOH
Cummins Inc.	SGT
Cyberswitching	Skytrac Systems
Danieli Corus	Solidcad Technologies
DataSquare	SSL
Diversified Machine, Inc.	Technet
Dynatec	Tenx
Eekang Design & Engineering	Thaisoft
ESO	The Intec Group
EverFocus	Tiscali
FCSL	Tkaczuk & Associates Inc.
Formatest AG	Tongji University
Freudenberg	TransCore
Gintech	TriTech
GIV Solutions	T-Systems
Greensboro News & Record	UDSAE
Hadal Technologies, Inc.	UNI DUE
HiTi Digital	University of Washington
I E H CORP	usb GmbH
ICP Solution	USI
Imagen S.A.	xPLM Solution
Innovative Solutions	Yoeng Guan Group
Iskratel	ZyXEL

-----  
More Info  
Visit: <http://www.aras.com>  
Email: [info@aras.com](mailto:info@aras.com)  
-----

[Forward email](#)

 **SafeUnsubscribe®**

This email was sent to marclind@verizon.net by [mlind@aras.com](mailto:mlind@aras.com).  
[Update Profile/Email Address](#) | Instant removal with [SafeUnsubscribe™](#) | [Privacy Policy](#).

Email Marketing by



Aras Corp | 300 Brickstone Square | Suite 904 | Andover | MA | 01810