

Aras Innovator Client Cleaning Procedure



Aras Innovator 9.0

Document #: 9.0.1.10182007

Last Modified: 6/23/2008

ARAS CORPORATION

Copyright © 2007 Aras Corporation. All rights reserved

Aras Corporation
300 Brickstone Square
Suite 904
Andover, MA 01810

Phone: 978-691-8900
Fax: 978-794-9826

E-mail: Support@aras.com
Website: <http://www.aras.com>

Notice of Rights

Copyright © 2007 by Aras Corporation. This material may be distributed only subject to the terms and conditions set forth in the Open Publication License, V1.0 or later (the latest version is presently available at <http://www.opencontent.org/openpub/>).

Distribution of substantively modified versions of this document is prohibited without the explicit permission of the copyright holder.

Distribution of the work or derivative of the work in any standard (paper) book form for commercial purposes is prohibited unless prior permission is obtained from the copyright holder.

Aras Innovator, Aras, and the Aras Corp "A" logo are registered trademarks of Aras Corporation in the United States and other countries.

All other trademarks referenced herein are the property of their respective owners.

Notice of Liability

The information contained in this document is distributed on an "As Is" basis, without warranty of any kind, express or implied, including, but not limited to, the implied warranties of merchantability and fitness for a particular purpose or a warranty of non-infringement. Aras shall have no liability to any person or entity with respect to any loss or damage caused or alleged to be caused directly or indirectly by the information contained in this document or by the software or hardware products described herein.



Table of Contents

SEND US YOUR COMMENTS	5
1 INTERNET EXPLORER CACHE	6
1.1 INTERNET EXPLORER 6	6
1.2 INTERNET EXPLORER 7	9
2 .NET ASSEMBLY CACHE	12
2.1 .NET FRAMEWORK 1.1	12
2.2 .NET FRAMEWORK 2.0	12
2.3 MANUAL DELETION OF THE CLIENT ASSEMBLY CACHE	12



Send Us Your Comments

Aras Corporation welcomes your comments and suggestions on the quality and usefulness of this document. Your input is an important part of the information used for future revisions.

- Did you find any errors?
- Is the information clearly presented?
- Do you need more information? If so, where and what level of detail?
- Are the examples correct? Do you need more examples?
- What features did you like most?

If you find any errors or have any other suggestions for improvement, please indicate the document title, and the chapter, section, and page number (if available).

You can send comments to us in the following ways:

- Email:
Support@aras.com
Subject: Aras Innovator Documentation

Or,

- Postal service:
Aras Corporation
300 Brickstone Square
Suite 904
Andover, MA 01810
Attention: Aras Innovator Documentation

Or,

- FAX:
978-794-9826
Attn: Aras Innovator Documentation

If you would like a reply, please provide your name, email address, address, and telephone number.

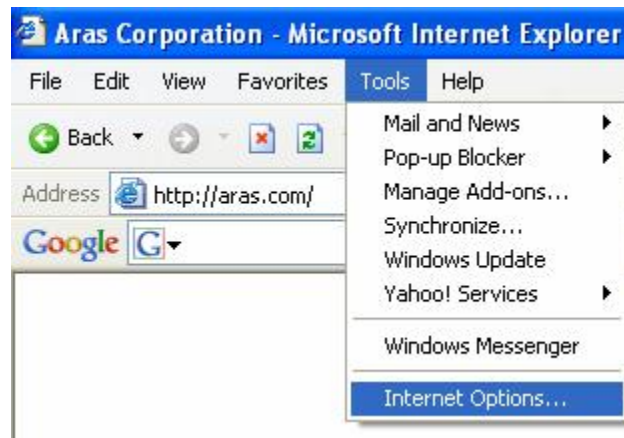
If you have usage issues with the software, please visit <http://www.aras.com/support>



1 Internet Explorer Cache

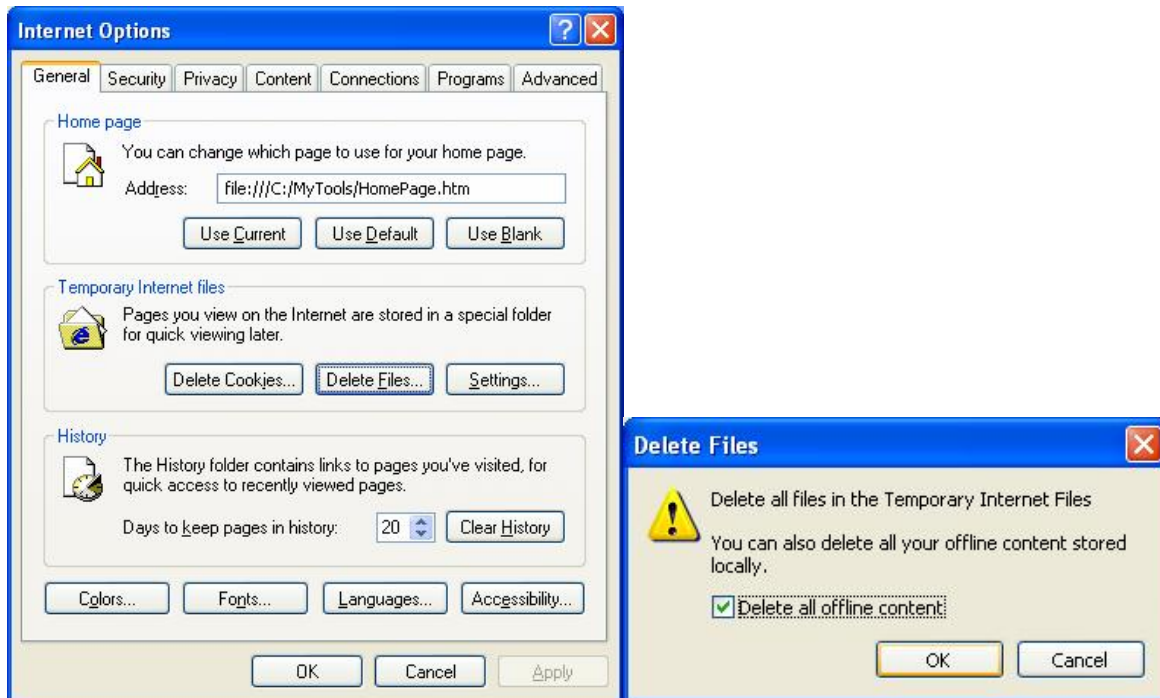
1.1 Internet Explorer 6

- 1) Open a new Internet Explorer window
- 2) From the main menu, select Tools → Internet Options

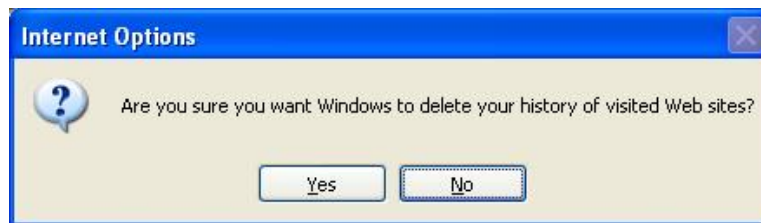


- 3) On the general tab select "Delete Files"
 - a. When prompted select "Delete all offline content"
 - b. Select OK





- 4) Select "Clear History" from the General tab
 - c. When prompted select Yes

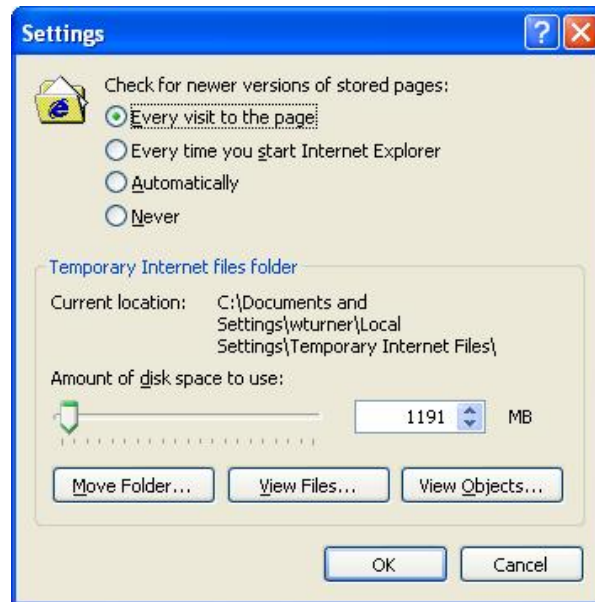


- 5) Select "Delete Cookies" from the General tab
 - d. When prompted select OK



- 6) Select "Settings" from the General tab
 - e. Make sure "Every visit to the page" is selected



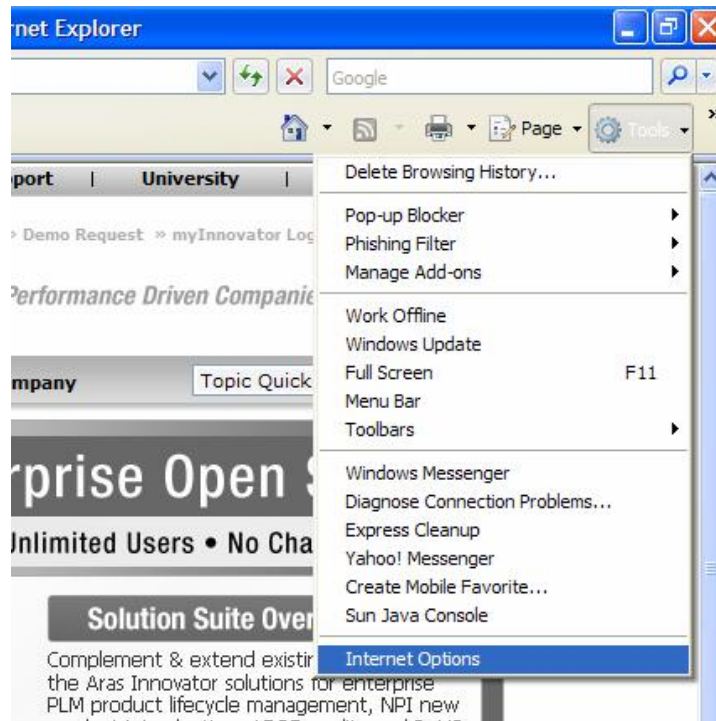


- f. Select OK to close the Settings dialog
- 7) Select OK to close the Internet Options dialog



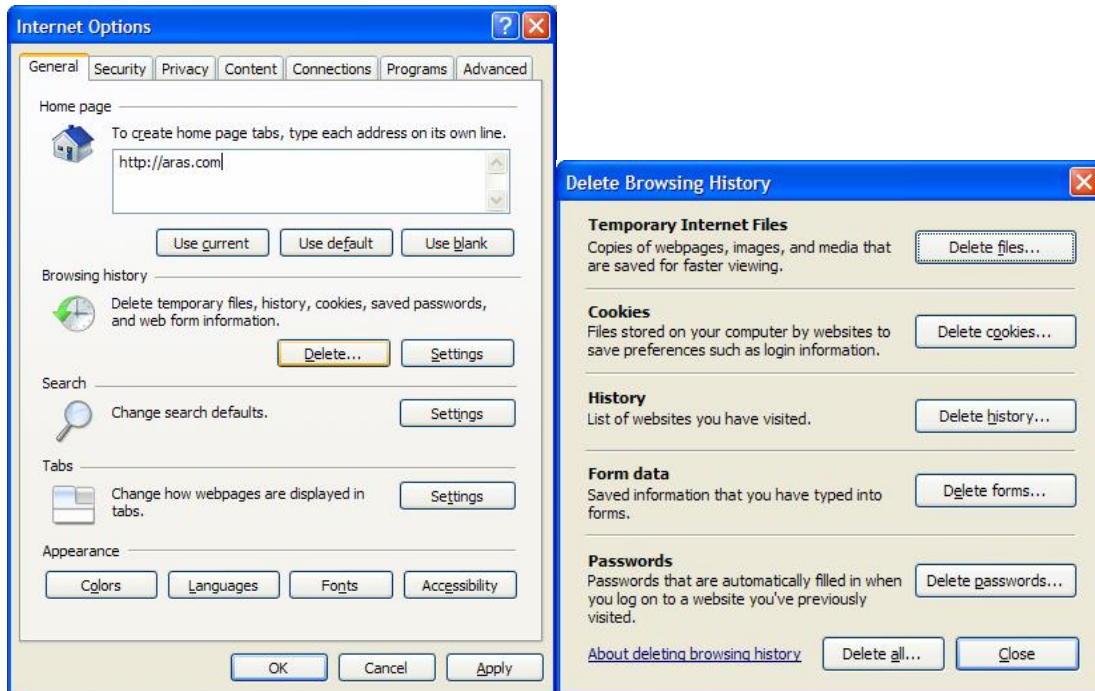
1.2 Internet Explorer 7

- 1) Open a new Internet Explorer window
- 2) From the Tools menu, select Tools → Internet Options



- 3) On the general tab select "Delete" under browsing history
 - a. When prompted select "Delete all..."



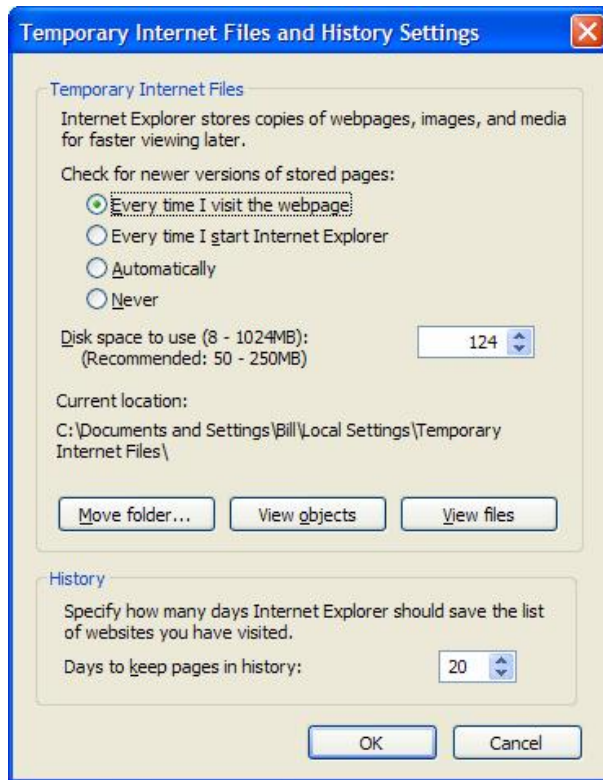


- i. You may retain passwords, if necessary.
 - ii. Delete all files and settings stored by add-ons.
- b. Select Yes



4) Select "Settings" from the General tab under Browsing





- a. Make sure "Every time I visit the webpage" is selected
 - b. Select OK to close the "Temporary Internet Files and History Settings" dialog
- 5) Select OK to close the Internet Options dialog



2 .NET Assembly Cache

You only need to choose one of the three sections that follows that best fits your .NET configuration.

2.1 .NET Framework 1.1

- 1) Close all Internet Explorer Windows
- 2) Open a command prompt
 - a. Select Start→Run from the Start menu
 - b. Enter "CMD" and select OK
- 3) From the command prompt run the following command
 - a. Windows XP
 - i. C:\WINDOWS\Microsoft.NET\Framework\v1.1.4322\gacutil /cdl
 - b. Windows 2000
 - i. C:\WINNT\Microsoft.NET\Framework\v1.1.4322\gacutil /cdl

2.2 .NET Framework 2.0

This process requires that the .NET 2.0 SDK be installed. If this is not installed, please use the manual procedure outlined in section 2.3

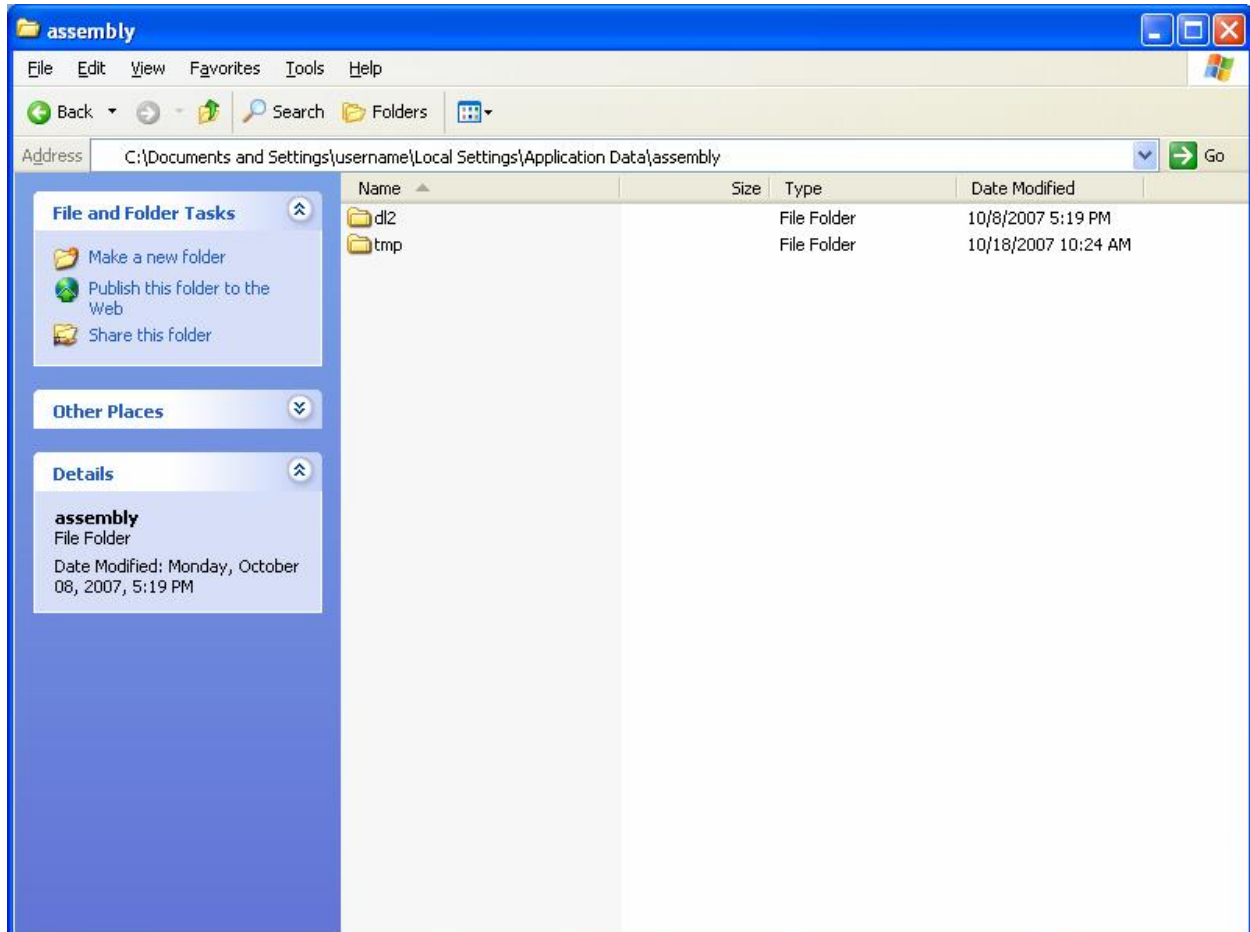
- 1) Close all Internet Explorer Windows
- 2) Open the .NET 2.0 SDK command prompt
 - a. Select Start→Microsoft .NET Framework SDK v2.0→SDK Command Prompt from the Start menu
- 3) From the command prompt run the following command
 - a. gacutil /cdl

2.3 Manual Deletion of the Client Assembly Cache

This process can be used if there is no way to run the gacutil command. It is not considered a best practice, but is an acceptable workaround.



- 1) Close all Internet Explorer Windows
- 2) Browse to the file location "C:\Documents and Settings\{username}\ Local Settings\Application Data\assembly"



- a. {username} is username of the logged in user.
- 3) Delete the contents of this folder
 - a. There should be a temp folder and a dll folder.

