

Aras Innovator Service Usage Instructions



Aras Innovator 8.1

Document #: 8.1.09202006

Last Modified: 4/4/2007

aras INNOVATOR ®	Additional Info
Microsoft® Enterprise Solutions with Unlimited Users	▶ Documentation
Download Now	▶ Training
	▶ Support

ARAS CORPORATION

Copyright © 2007 Aras Corporation. All rights reserved

Aras Corporation
Heritage Place
439 South Union Street
Lawrence, MA 01843

Phone: 978-691-8900
Fax: 978-794-9826

E-mail: Support@aras.com
Website: <http://www.aras.com>

Notice of Rights

Copyright © 2007 by Aras Corporation. This material may be distributed only subject to the terms and conditions set forth in the Open Publication License, V1.0 or later (the latest version is presently available at <http://www.opencontent.org/openpub/>).

Distribution of substantively modified versions of this document is prohibited without the explicit permission of the copyright holder.

Distribution of the work or derivative of the work in any standard (paper) book form for commercial purposes is prohibited unless prior permission is obtained from the copyright holder.

Aras Innovator, Aras, and the Aras Corp "A" logo are registered trademarks of Aras Corporation in the United States and other countries.

All other trademarks referenced herein are the property of their respective owners.

Notice of Liability

The information contained in this document is distributed on an "As Is" basis, without warranty of any kind, express or implied, including, but not limited to, the implied warranties of merchantability and fitness for a particular purpose or a warranty of non-infringement. Aras shall have no liability to any person or entity with respect to any loss or damage caused or alleged to be caused directly or indirectly by the information contained in this document or by the software or hardware products described herein.



Table of Contents

1	SEND US YOUR COMMENTS	5
2	OVERVIEW	6
2.1	COMPONENTS	6
3	INSTALLATION AND CONFIGURATION	7
3.1	INSTALLATION	7
3.2	CONFIGURATION	7
3.2.1	<i>Aras Innovator Server Connection Properties:</i>	9
3.2.2	<i>Job Control Properties:</i>	9
3.2.3	<i>Aras Innovator Service Operating Properties:</i>	10
3.3	CONFIGURATION FILE EXAMPLE.....	11
3.4	EVENT MONITOR	11



1 Send Us Your Comments

Aras Corporation welcomes your comments and suggestions on the quality and usefulness of this document. Your input is an important part of the information used for future revisions.

- Did you find any errors?
- Is the information clearly presented?
- Do you need more information? If so, where and what level of detail?
- Are the examples correct? Do you need more examples?
- What features did you like most?

If you find any errors or have any other suggestions for improvement, please indicate the document title, and the chapter, section, and page number (if available).

You can send comments to us in the following ways:

- Email:
Support@aras.com
Subject: Aras Innovator Documentation

Or,

- Postal service:
Aras Corporation
Heritage Place
439 South Union Street
Lawrence, MA 01843
Attention: Aras Innovator Documentation

Or,

- FAX:
978-794-9826
Attn: Aras Innovator Documentation

If you would like a reply, please provide your name, email address, address, and telephone number.

If you have usage issues with the software, please visit
<http://www.aras.com/support/>



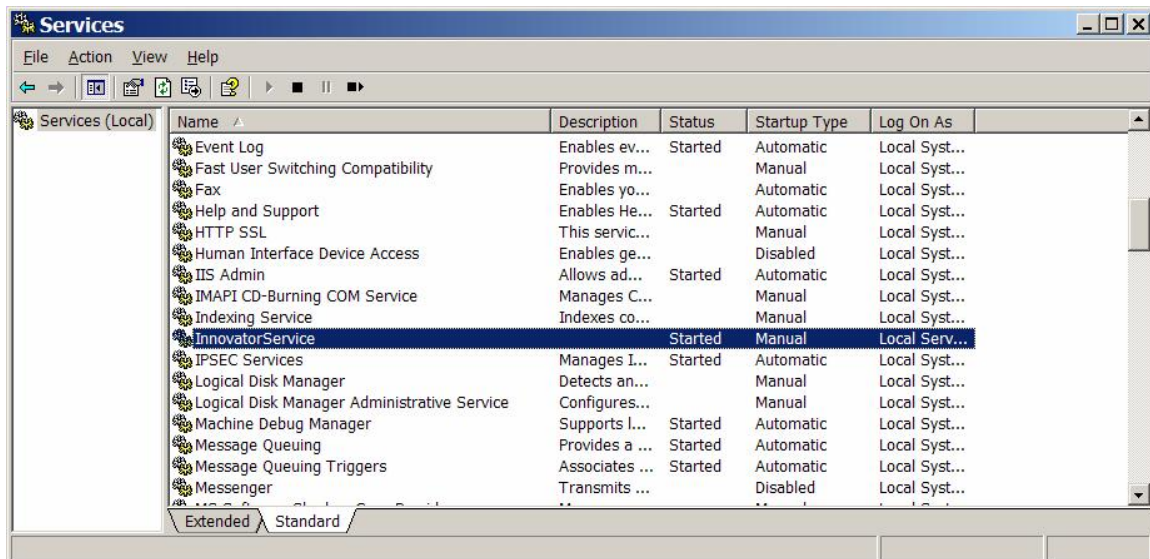
2 Overview

The Aras Innovator Service is a Windows executable program that runs as a Windows Service (see screen shot). It is used to automatically run Innovator Methods on a periodic schedule, as specified in the InnovatorServiceConfig.xml file.

A single running instance of the Aras Innovator Service can be configured to periodically connect to any number of Aras Innovator Servers, and for each Aras Innovator Server, run any number of Methods. The standard Windows Event Viewer is used for logging of program status and error messages.

Examples of when the Aras Innovator Service should be used are:

- 1) Running a Method that creates and sends Workflow reminder emails
- 2) Running a Method nightly that creates a report and mails it to a set of users



2.1 Components

InnovatorService.exe	Windows executable program
InstallService.bat	Batch file to install the Innovator Service
UnInstallService.bat	Batch file to un-install the Innovator Service
InnovatorServiceConfig.xml	Configuration file

NOTE: The InnovatorService requires Aras Innovator 6.1 and higher.



3 Installation and Configuration

3.1 Installation

The components listed in section 2.1 can be found on the Aras Innovator CD in the Scheduler folder.

- 1) Copy the InnovatorService.exe file and the two BAT files into any Folder.
- 2) Copy the file InnovatorServiceConfig.xml into the same folder.
- 3) In the Folder selected in step 2, run the BAT file InstallService.bat. This program runs the standard .NET utility named INSTALLUTIL. This program will leave a set of .NET log files in the working directory which should be checked for error messages, and then deleted. You will need to specify the .NET framework you wish to install to (2.0 or 1.1) in the command.
(i.e. C:\InnovatorService\InstallService 2.0)
- 4) INSTALLUTIL will prompt you for a windows authentication user name and password for the machine on which you are installing the service, use a fully qualified user name like domain_name\user_name. If the user name and password are not valid the installation will fail.
- 5) Verify that the Windows Service named "Innovator Service" was added to the management console (see screen shot above). Specify whether the service should be started automatically or manually. The user name and password for the service can be edited from the LogOn tab in the service Properties.
- 6) Edit the configuration file (see below) and then start the service.

NOTE: Starting and stopping the InnovatorService can be done using the Windows management console, or in a DOS command Window:

```
NET START INNOVATORSERVICE
```

```
NET STOP INNOVATORSERVICE
```

3.2 Configuration

The InnovatorServiceConfig.xml file is analogous to a UNIX CronTab file, specifying which processes to run, and when they should be run.

Example configuration file:

```
<?xml version="1.0" encoding="utf-8" ?>
<innovators>
  <innovator>
    <server>SERVER </server>
    <database>DATABASE</database>
    <username>USERNAME</username>
    <password>PASSWORD</password>
    <http_timeout_seconds>600</http_timeout_seconds>
    <job>
      <method>METHOD NAME</method>
      <months>MONTH STRING </months>
      <days>DAY STRING </days>
      <hours>HOUR STRING</hours>
      <minutes>MINUTE STRING</minutes>
    </job>
  </innovator>
  <eventLoggingLevel>LOGGING LEVEL</eventLoggingLevel>
  <intervalMinutes>INTERVAL</intervalMinutes>
</innovators>
```



</innovators>



3.2.1 Aras Innovator Server Connection Properties:

<innovator> tag is used to specify an Aras Innovator server to connect to. There can be multiple **<innovator>** tags in the configuration file.

<server> is the HTTP url of the server. This is the same url that end-users use to run the standard Aras Innovator client

Example `<server>HTTP:// http://PLMServer01/Innovator</server>`

<database> is the ID of the database in the InnovatorServerConfig.xml. Note that this string is case sensitive.

Example: `<database>Production</database>`

<username> is the login account that should be used for running the Methods.

Example: `<username>admin</username>`

NOTE: See documentation on the Method RunAs property for more control over the permissions granted to the Methods that are run.

<password> is the password for the login account, in plain-text.

Example: `<password>innovator</password>`

3.2.2 Job Control Properties:

For each **<innovator>**, there may be one or more **<job>** tags, specifying Methods that should be run. The * (asterisk) is used as a wildcard in the scheduling tags.

<method> is the Method name in the Innovator instance.

Example: `<method>Workflow Reminders</method>`

<months> is the day of the week that the Method should be run. Supports a comma delimited list of 1 through 12. January is month=1 and December is month=12.

Examples: `<months>2,5,8,11</months>` Run only in Mar, Jun, Sep and Dec
`<months></months >` Run every month

<days> is the day of the week that the Method should be run. Supports a comma delimited list. Sunday is day=1 and Saturday is day=7. A special value, "last", is used to indicate the last day of the current month.

Examples: `<days>1, 5</days>` Run on Sunday and Thursday
`<days>*</days>` Run every day
`<days>last</days>` Run only on the last day of the month

<hours> is the hours of the day that the Method should be run. Supports a comma delimited list of hour values from 0 through 23.



Examples: <hours>6,17</hours> Run 6am and again at 5pm
 <hours>*</hours> Run every hour

<minutes> is the minute of the hour that the Method should be run. Supports a comma delimited list of hour values from 0 through 59. A special value, "once", is used to indicate the job should be run only "once" when the <hours> criteria is met, but on which minute is not important.

Examples: <minutes>2,4,6,8,10,12</minutes> Run every 2 minutes
 <minutes>*</minutes> Run every minute
 <minutes>once</minutes> Run only once when the
 <hours> pattern is met.

There is an implied tag of <seconds> with a value of <seconds>once</seconds>. All jobs are run only once within the minute that satisfies the scheduling criteria.

3.2.3 Aras Innovator Service Operating Properties:

Two tags are used to control the behavior of the running InnovatorService process:

<eventLoggingLevel> sets the level of detail for messages that are sent to the Windows Event monitor.

Examples: <eventLoggingLevel>0</eventLoggingLevel> Service startup
 announcement and error
 messages from Innovator
 only
 <eventLoggingLevel>1</eventLoggingLevel> Announces the start of every
 Method run
 <eventLoggingLevel>2</eventLoggingLevel> Detailed reporting of every
 run cycle.

<intervalMinutes> sets the Windows timer to control how often the InnovatorService is start and the <job> timing logic is tested. Any value from 1 to 60 is supported.

Examples: <intervalMinutes>1</intervalMinutes> Service is run every minute
 (recommended setting)



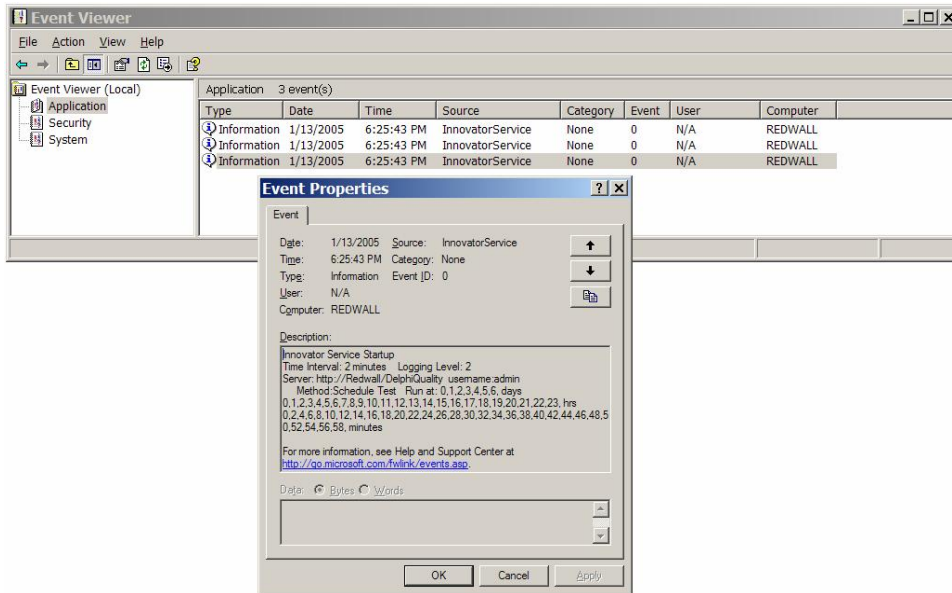
3.3 Configuration file example

The following example will run the Aras Innovator Program Management 'dailyUpdate' method every day at midnight with a timeout of 100 minutes:

```
<?xml version="1.0" encoding="utf-8" ?>
<innovators>
  <innovator>
    <server>http://host_name/Innovator71</server>
    <database>InnovatorSolutions71</database>
    <username>admin</username>
    <password>innovator</password>
    <http_timeout_seconds>6000</http_timeout_seconds>
    <job>
      <method>dailyUpdate</method>
      <months>*</months>
      <days>*</days>
      <hours>0</hours>
      <minutes>once</minutes>
    </job>
  </innovator>
  <eventLoggingLevel>2</eventLoggingLevel>
  <intervalMinutes>2</intervalMinutes>
</innovators>
```

3.4 Event Monitor

The standard Windows Event Monitor is used for logging. InnovatorService will log startup and shutdown messages. All error messages returned by the Aras Innovator Connection, or by the Methods are also logged to the Event Monitor.



The level of logging information displayed is configured in the InnovatorService.xml file.

