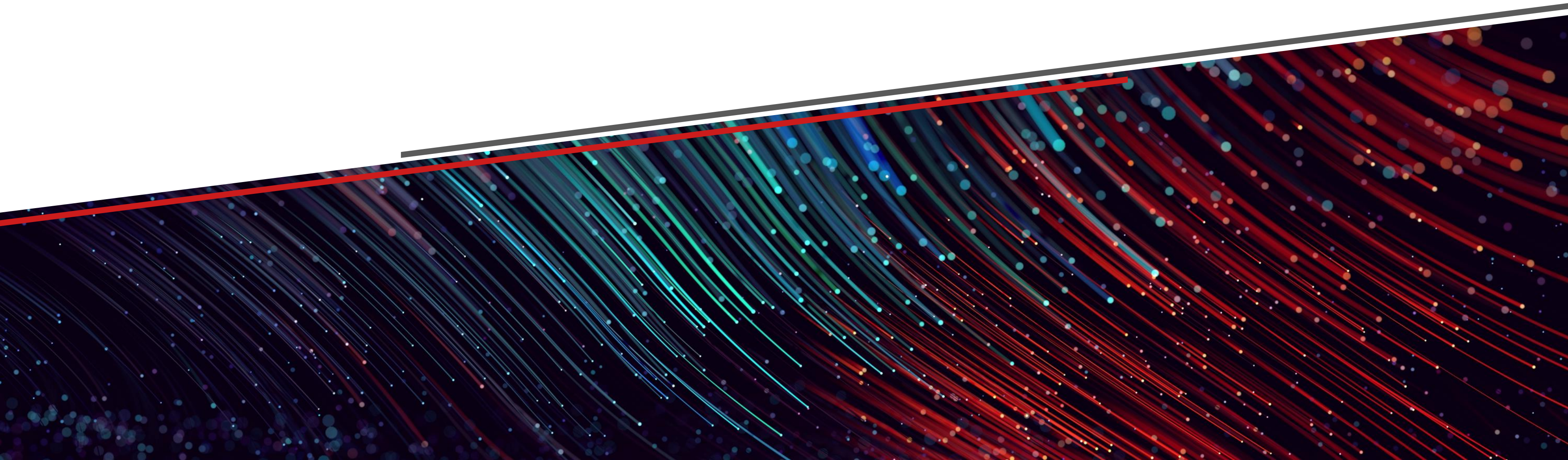




Aras Academic Program

December 2021



Program description

The Aras Academic Program is a program that makes Aras Innovator available to educators and students. The primary goal of the program is to provide subscriber licenses of Aras Innovator to educational institutions so that educators and students can advance their PLM education. Aras provides to institutions, at no charge, access to Aras Innovator, Aras Applications, Aras Community, Customer Support, Aras Training and access to the subscriber portal. Members of the Academic Program must work directly there the supplier of their partner applications such as CAD or PLM connectors. Upgrades of Aras Innovator are not included. Aras Innovator must be used for nonprofit, educational purposes.

Training options

- **Aras Innovator Training** – Free to all students and educators
<https://www.aras.com/en/training/training-classes>
 - **PLM Essentials** - 3 day Introduction to Product Engineering and Program Management
 - **Aras Innovator Configuring Solutions** - 5 day Introduction to Aras Innovator enterprise application framework
 - **Aras Innovator Developing Solutions** - 3 day custom programming and integration with the Aras Innovator enterprise application framework and solutions
 - Classes are instructor-led and online
- **Access to Training Documentation**
 - The link to the FTP site and the login credentials for Academic Subscriber-only FTP site will automatically be emailed to the “support” contacts upon registration
- **Online Learning Courses** (Go to the Subscriber portal > Training Resources for links)
 - Component Engineering
 - Manufacturing Process Planning
 - Quality Planning Essentials
 - Product Engineering Essentials
 - Program Management Essentials
 - Visual Collaboration
 - Self Service Reporting
 - Technical Documentation
- **Tech Tips** (Go to Subscriber portal > Training Resources for links)
 - Technical tips to help you with specific issues



Training Locations

- Andover, MA
- Troy, MI
- Munich, Germany
- Tokyo, Japan

Add-on solutions (must be purchased separately)

- Aras Offers Solutions with Popular MCAD and ECAD Solutions

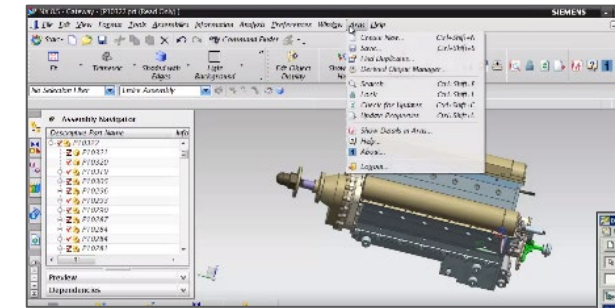
- Mechanical CAD Connectors
 - CATIA, Siemens NX
 - Creo Parametric
 - SolidWorks, Solid Edge
 - Inventor, AutoCAD
- ECAD/EDA Connectors
 - Electronic Circuit Board - Schematic Design
 - Electronic Circuit Board - PCB Layout Design
 - Electrical Wire / Cable Harness
- Licensing – Concurrent user
- A complete list can be found [here](#)

- Component Engineering with IHS

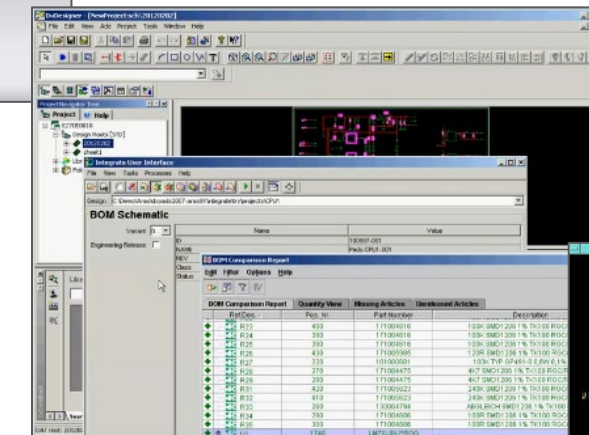
- Access to IHS Component Information – directly from Aras Innovator Parts
- Part datasheets, Environmental compliance information
- Mfr Alerts: PCNs, EOLs, counterfeit alerts, Component life cycle information
- Licensing – Subscription Users or # of Parts

- ERP Integrations

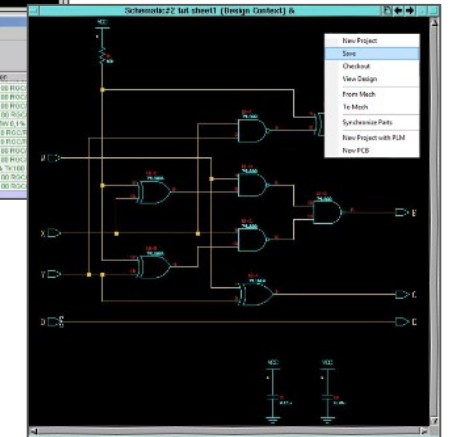
- ERP Connectors
 - SAP
 - Oracle
 - Others
- Licensing - Number of Subscription Users



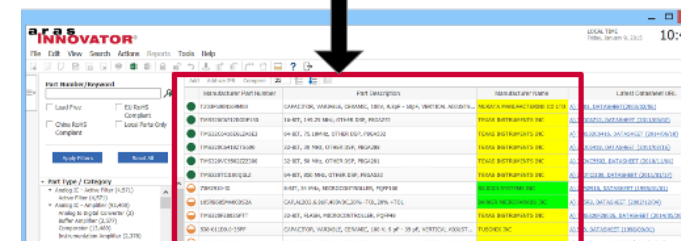
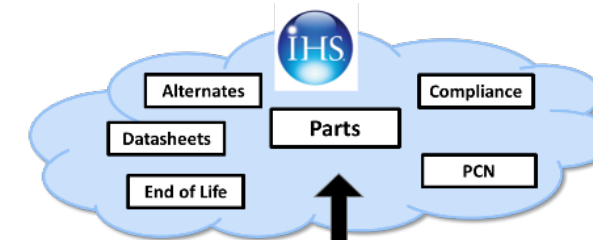
NX



DX Designer



Schematics



Component Engineering



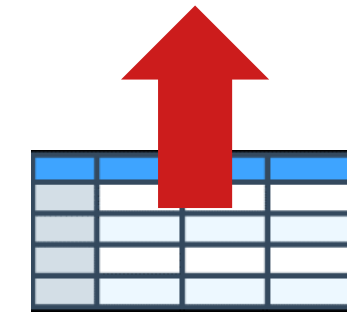
CAD connectors

The following CAD connectors are available for Aras Innovator. These connectors are provided by partners of Aras and not part of the free subscriber license. You can purchase the connector from Aras at list price or you can reach out to the partner ask about their academic discount.

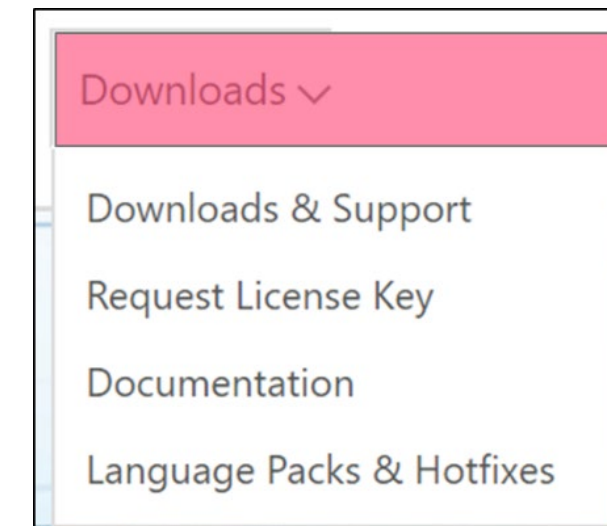
CAD CONNECTORS BY PARTNER		as of 11-30 2021									
		MCAD Tools									BIM
		Autodesk		Dassault			PTC		Siemens		Autodesk
Partner	Contact Information for Sales Opportunities	Autocad	Inventor	CATIA V5	CATIA V6	SolidWorks	Creo	Creo Direct	NX	Solid Edge	Revit
	ARAS SKU	PS-2150	PS-2151	PS-2100	PS-2166	PS-2148	PS-2101	PS-2098	PS-2102	PS-2107	PS-2208
ITI USA	Wayne Holt Wayne.Hoit@iti-global.com ITI Connector Info						✓		✓		
Essig (SofTech) USA	Erin Kelly ekelley@essigplm.com Essig Conector Info	✓	✓			✓					
T-Systems Germany	Thomas Winden thomas.winden@t-systems.com CMI_Support@t-systems.com			✓	✓				✓		
Elysium Japan	Ichikai Kamihira marketing@elysium.co.jp Ichikai Kamihira <kami@elysium.co.jp>		✓	✓		✓	✓		✓		
FocusPLM Italy	Sergio Salsedo salsedo@focusplm.it FocusPLM Connector Info	✓	✓	✓	✓	✓	✓	✓	✓	✓	
XPLM Germany	Mark Caradonna mark.caradonna@xplm.com XPLM Connector Info	✓	✓	✓	✓	✓	✓	✓	✓	✓	✓
XPLM EMEA - Japan	Kerstin Schulze kerstin.schulze@xplm.com										

Productivity and support

- Productivity tools and utilities
 - Data Import (batch load) tools
 - Replicated vaulting capabilities and Vault restore utilities
 - Subscriber portal – documentation and knowledgebase
- Access to the latest release of Aras Innovator
 - New releases every six weeks
 - Hotfixes and security patches
- Aras Innovator Support
 - Experienced Aras support engineers provide live hotline and online support
 - 5 days/week x 10 hours day
 - 7 days/week x 24 hours day – for 1,000+ user subscriptions
 - Developer support and escalation management
 - Performance tuning and analysis
 - Status Support Incidents via the Subscriber portal
 - Free upgrades are not part of an Academic Subscription



Batch Upload



Support@aras.com

Academic program benefits

		Open-Access	Academic Subscription	Comments
Applications	Product Engineering	Yes	Yes	
	Program Management	Yes	Yes	
	Process Quality Binding	Yes	Yes	
	Manufacturing Process Planning	Except features noted	Yes	The work instructions publishing feature (HTML, PDF)
	Technical Documentation	Except features noted	Yes	The publishing feature (XML, HTML, PDF)
	Quality Management System	Except features noted	Yes	The export feature (Excel, XPS)
	Component Engineering	Level 1 only	Level 3	Access to Level 3 data and features (see Appendix) requires a Component Engineering subscription (separate from Aras Innovator subscription)
	Requirements Management /ENGINEERING	No	Yes	All - RM has been EOL. RE is a new / separate product.
	Aras Impresa MRO	No	Yes	All
	Aras Comet SPDM	No	No	

Academic program benefits

		Open-Access	Academic Subscription	Comments
Partner Connectors	CAD Connectors (from Partners)	No	Yes	University may purchase connector from Aras or may reach out to vendor and request a University Discount. A complete list of connectors can be found here .
	Solidworks	No	Yes	
	Creo	No	Yes	
	NX	No	Yes	
	Catis	No	Yes	
	Inventor	No	Yes	
	AutoCAD	No	Yes	
	SolidEdge	No	Yes	
	All ECAD	No	Yes	
	Digital Mockup (from Kisters)	No	Yes	
	ASFALIS Multi-CAD Gateway (from Elysium)	No	Yes	All (requires partner subscription in addition to Aras Innovator subscription)
	Enterprise Integrations (from Partners)	No	Yes	All (requires partner connector subscription in addition to Aras Innovator subscription)

Academic program benefits

		Open Access	Academic Subscription	Comments
Aras Connectors	Office Connector	No	Yes	All
	Altium Vault Connector	No	Yes	All
	Solidworks EPDM Pro Connector	No	Yes	All
Other	Support	No	Yes	Access to customer support (telephone, online) for designated people
	Training	No	Yes	Free attendance at Aras online ILT sessions, access to online training, access to PDFs of ILT training manual upon request
	Community	No	Yes	Access to community.aras.com blogs, forum, Aras and Community projects
	Upgrade Services	No	No	
	Access to Aras Logo and Branding Guidelines	No	Yes	
	Access to service packs	No	Yes	
	Access to the Aras Subscriber Portal	No	Yes	
	Aras Community	Yes	Yes	

Academic program benefits

		Open Access	Academic Subscription	Comments
Features	3D CAD to PDF Converter	No	Yes	
	Visual Collaboration	No	Yes	
	Replicated Vault	No	Yes	
	Self-Service Reporting	No	Yes	
	Enterprise Search	No	Yes	
	Single Sign-On	No	Yes	
	All other capabilities	Yes	Yes	

Support options summary

Support Type	How to Access
Telephone Support	To access a support person by telephone Monday – Friday, 8 a.m. to 6 p.m. ET, please call +1 (978) 691-8900 and select option 2.
Online Support	To access online support during the same timeframe, please email us at support@aras.com .
Knowledge Base	You can also find the forums, blogs, a knowledgebase and the support matrix at https://www.aras.com/SubscriberPortal/support.aspx
Product Documentation	https://www.aras.com/support/documentation/
Open Community Forum	Aras Open PLM Community you will have access to blogs, discussions, the Aras Knowledgebase, Community projects and Aras Labs.
General Partner Program Questions	Partners@Aras.com
Training	https://www.aras.com/university/training-classes.aspx
Program Announcements	Partner Portal https://community.aras.com/partner-portal/b/announcements
Downloads	Partner Portal: Office Connector: https://community.aras.com/subscriber-portal/p/downloads
Demo Environments	Partner Portal https://community.aras.com/partner-portal/p/downloads
View and Log Your Subscribers Issues & Incidents	Partner Portal https://community.aras.com/partner-portal/p/support
Product Roadmap	Partner Portal https://www.aras.com/plm-roadmap/

Upgrade Options

Educational institutions have several options when it comes to upgrades

- **Stay on the existing version**

If the institution is active in the program and an active subscriber, Aras will continue to offer support

- **Keep projects short**

When the project is complete, download the latest version and begin the next project

- **Save and document all your configurations and customizations. Backup your institutions data.**

The Aras architecture is comprised of four layers: Client, Application, Services and Repository. The repository layer is where the application models and vaulted files are stored, which can be packaged and moved at any time. If a newer version is download, you can reconnect connect to the repository but you will need to rewrite the configurations and customizations.

- **Pay Aras for Upgrade Services**

In special situations Aras may be contacted to update a university. Depending on the scope the fee maybe between \$10,000 and \$15,000.

- **Upgrade Tools**

Aras has created several tools to help prepare for upgrade. These documents can be found in the [Upgrades tab](#) of the subscriber portal. They include:

- Upgrade Planning Enhancements Video
- Why Upgrade Presentation - Why upgrade and how to get there
- Upgrade Introduction - Upgrade services should you decide to purchase an upgrade
- Upgrade Test Planning Guide - Step-by-step instructions on developing an overall test plan
- Test Case Template - Sample Tests for Part Management Functionalities
- Upgrade Practices Example - Upgrade case study with Lord Corporation

PLM instruction options

- **Essentials of PDM – Enabling the Digital Enterprise**

is a textbook by professors Amy Mueller, Jorge D. Camba and Travis Fuerst from the Department of Computer Graphics Technology at Purdue University. The goal of this book is to provide a resource for educators to expose students to the basic concepts, capabilities and processes associated with PDM so that they are familiar with the tools and methods they will encounter in their future careers. The book provides a solid foundation of product data management in clear, understandable language without vendor bias or hype.

The book is available from the publisher's website: www.EssentialsOfPDM.com.

- **Product Lifecycle Management: 21st Century Paradigm for Product Realization**

John Stark is a leading expert, consultant and writer at the forefront of Product Lifecycle Management (PLM), the business activity of managing products across their lifecycles - from innovation, through definition, realization and support to retirement. Stark's books propose concepts and approaches with which companies can address and improve their PLM performance. He draws on widespread experience gained working with more than a hundred companies in a range of industry sectors. His first book was published in 1986, his most recent in 2019.

The book is available on Amazon: <https://www.amazon.com/exec/obidos/ASIN/3319174398/engineeringdatam>

- **Purdue University PLM Certificate Program**

The Purdue PLM Certificate Program combines concepts with experiential learning to maximize a practical, “real world” focus on Product Lifecycle Management (PLM).

<https://polytechnic.purdue.edu/digital-enterprise-center/plm-certificate-program>

PLM instruction options

- **CIMdata – PLM Certificate Program**

CIMdata's Public PLM Certificate Program leverages CIMdata's internationally recognized 5-day PLM Certificate Program for Industrial Organizations and PLM Solution Suppliers.

<https://www.cimdata.com/en/events/cimdata-plm-certificate-program>

- **Professional PLM Initiative**

There is a Professional PLM Initiative whose goal is to establish a professional structure within the PLM industry that will support its practitioners, and the discipline of PLM itself, into the long-term future.

Details can be found here <http://www.professionalplm.org/>

- **IpX CM2 Certification**

IpX's education sector is the premier worldwide industrial resource for configuration management, systems engineering, operational excellence, digital transformation and high-performance culture training with courses offered in seven languages. IpX is best known for the creation of the industry changing CM2 certification program initiated in 1986.

<https://ipxhq.com/training/cm2-courses/about-cm2-certification-courses>

Aras Academic Institutions

Academic institutions around the world are using Aras in the classroom and providing future business and technology leaders with advanced training in one of today's hottest areas: innovation.



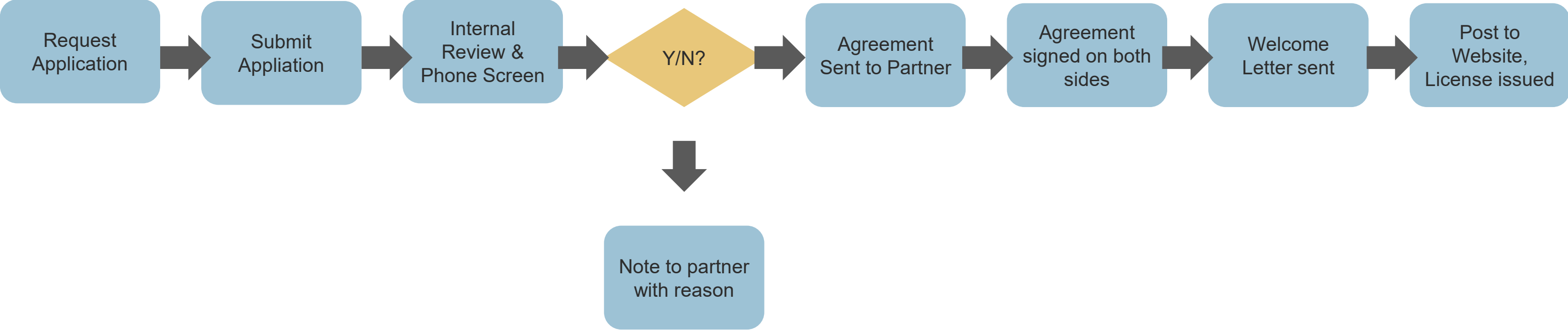
Australia
Colombia
Finland
France
Germany
India
Italy
Japan
Mexico
Netherlands

Pakistan
Poland
Romania
South Africa
South Korea
Spain
Sweden
Switzerland
United States

50+ Institutions in the program

<https://www.aras.com/academic-program>

Onboarding process



Typically, about 4 weeks