

RIGHT NOW

ACE 2014

Customizing Aras Product Engineering

Popular customizations for complex products & processes

Introduction



- The Aras Innovator Product Engineering Solution provides a complete set of capabilities to manage product development
- The built-in functionality can be extended to meet your needs exactly, now and into the future
- Aras Consulting and Partners often assist customers to tailor the PE Solution to meet their needs
- This presentation will demonstrate some of the most common customizations and will show how to do them

Demo – Product Engineering Overview



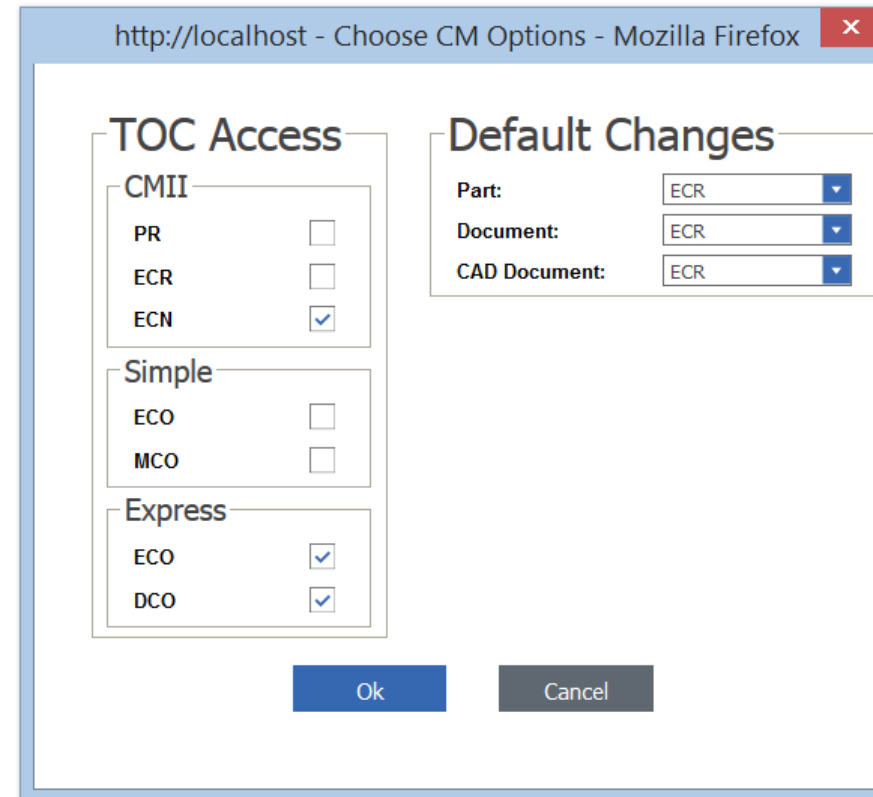
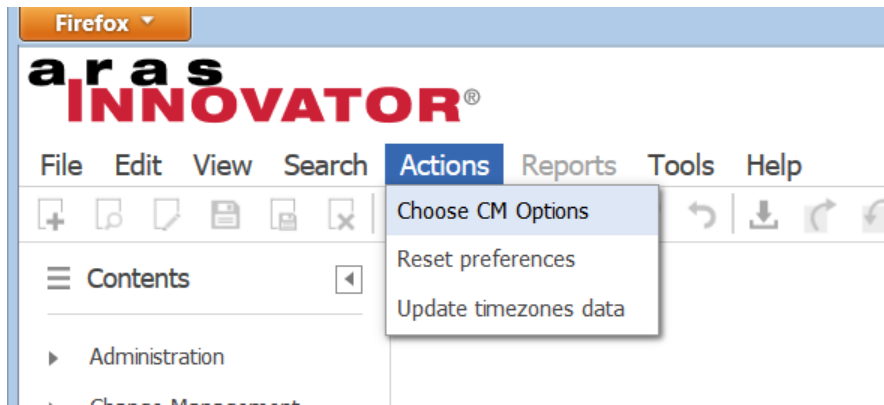
- Parts
- Bills of Material
- Documents
- CAD Documents
- Change Management
 - Simple ECO/MCO
 - CMII PR/ECR/ECN
 - Express ECO/DCO

Typical Customizations

- Configuring the Change Types
- Adding ItemTypes under change control
- Adding “Float on Release” to the change management methods
- Overriding the Revision
- Dealing with legacy revisioning in migration

Demo – Configuring Change Types

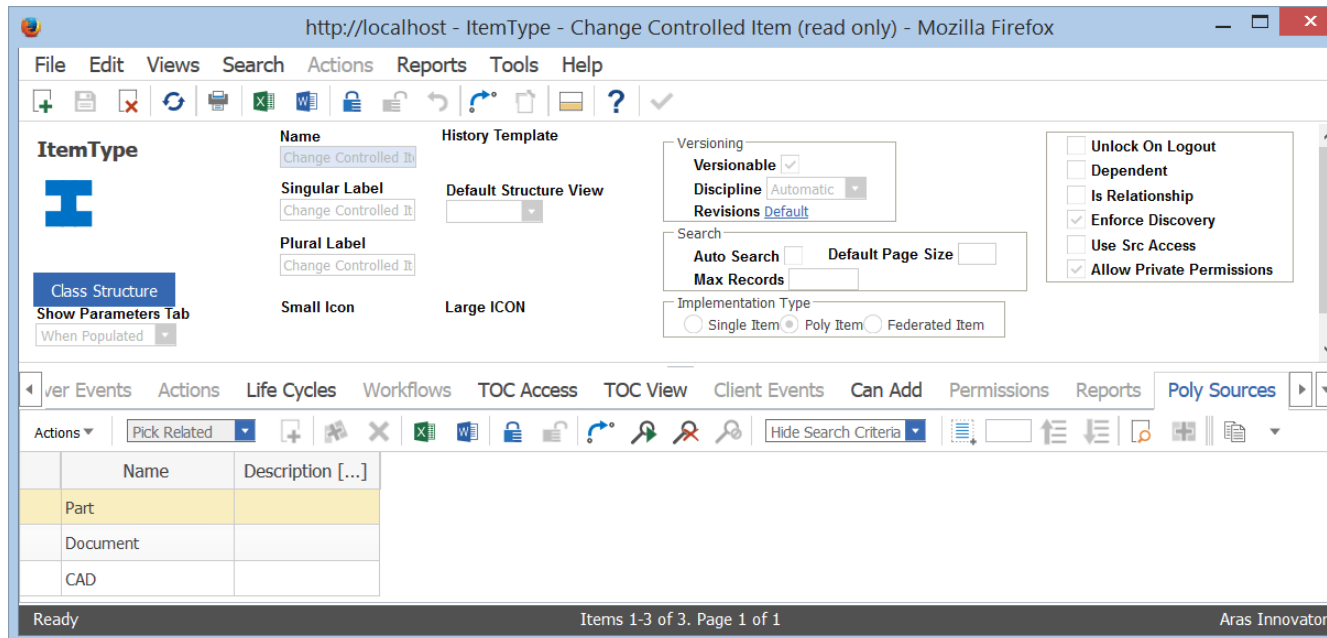
- Aras Innovator provides an administrative action to enable allowed and default change types to be readily configured (Actions>Choose CM Options)



Demo -Adding ItemTypes under change control



- Often, new unique ItemTypes are created, and you may want some of these under change control (mfg. routings, CDRs, tools, etc.)
- The Change Controlled Item PolyItem defines the items which can be made an “Affected Item” on a change



Demo -Adding ItemTypes under change control



http://localhost - ItemType - Change Controlled Item (read only) - Mozilla Firefox

File Edit Views Search Actions Reports Tools Help

Item Type

I

Class Structure
Show Parameters Tab
When Populated

Name: Change Controlled It
Singular Label: Change Controlled It
Plural Label: Change Controlled It
Small Icon
Large ICON

History Template
Default Structure View

Versioning
Versionable
Discipline: Automatic
Revisions: Default

Search
Auto Search Default Page Size
Max Records

Implementation Type
 Single Item Poly Item Federated Item

Unlock On Logout
 Dependent
 Is Relationship
 Enforce Discovery
 Use Src Access
 Allow Private Permissions

ver Events Actions Life Cycles Workflows TOC Access TOC View Client Events Can Add Permissions Reports Poly Sources

Actions Pick Related

Name	Description [...]
Part	
Document	
CAD	

Ready Items 1-3 of 3. Page 1 of 1 Aras Innovator

Demo - Adding Float on Release



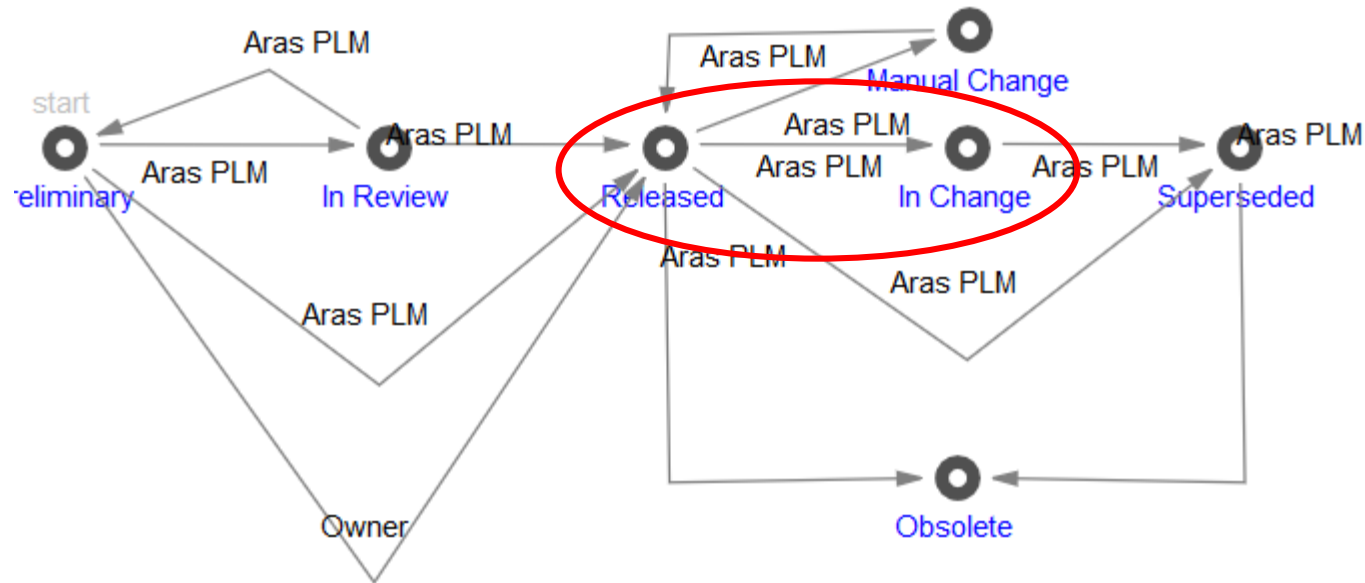
- Some organizations revise all parents if a component is revised or replaced
- The PE Solution, by default, fixes relationships between parents and their children when a parent is released. So if a child is updated, the parent does not use it unless it is revised, too.
- Simple changes to the PE_ChangeltemTransition method can update these parents to allow them to take advantage of the latest released children

For more information on what Fixed & Float Relationships are see

<http://plmalpha.wordpress.com/2012/04/09/data-relationships-and-fixed-float-rules-in-aras>

Float on Release Logic

- Update latest released (“Released” or “In Change”) parents not affected on this change to use the new released affected item child when the change releases the affected item



PE_ChangeltemTransition structure



- Sections for each Change Type (ECR, ECN, Express ECO, etc.)
 - Sections for State and Transition
 - Sections for ValidateState, ValidateTransition and ProcessTransition
- Functions for validation tests and processing

To handle float on release, add method code to the “In Review->Released” transition handler to update non-affected released parents to use affected new released versions for their relationships

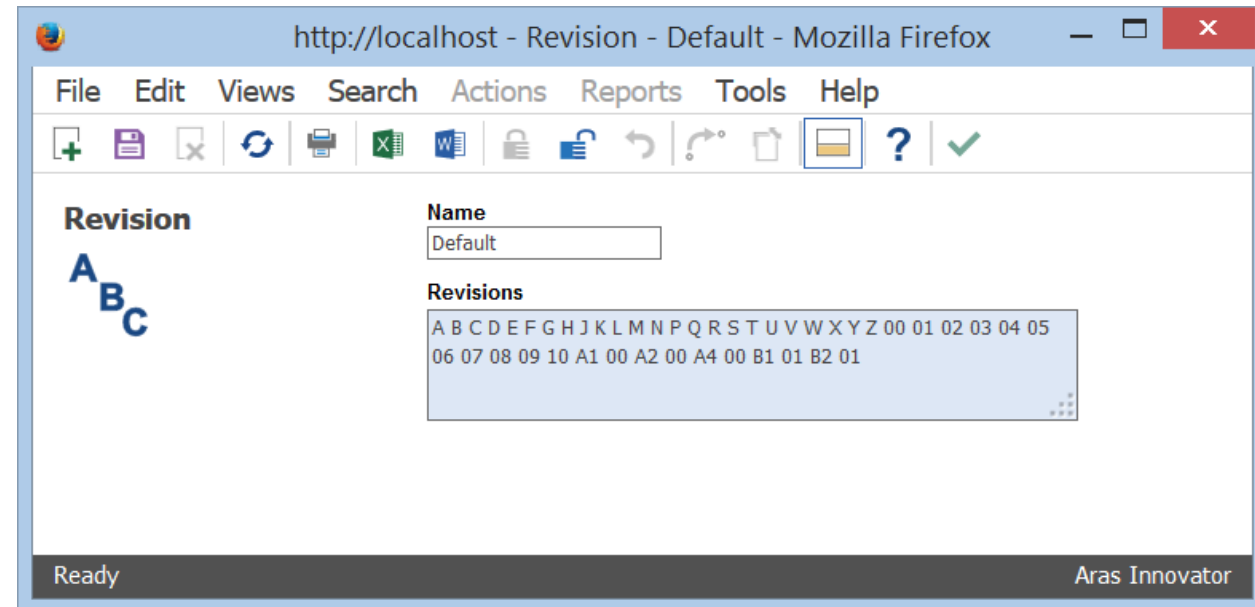
Demo – Overriding the Revision



- Aras Innovator automatically increments the (major) Revision when a released versionable item is edited
- For change controlled items, this is done in the PE_ChangeltemTransition method
- This revision can be easily overridden, to do things like non-revision changes, etc, by modifying that method, as long as the revision is valid in the defined Revision scheme
- The Revision scheme item can be used to support handling legacy revision schemes to support data migration

Revision Item

- Put all allowed values (including legacy values, if you want to be able to revise those items) into the string. You might need to increase the size of the Revision property on the Revision ItemType.
- The system finds the first occurrence of the current value and picks the next when versioning



- Use Help>Just Ask Innovator to learn more about all the built in capabilities of the Product Engineering Solution
- Attend the Aras PE Essentials training or download it and other training resources like video demos through the Subscriber Portal to learn more
- Download the CMII Affected Items Wizard under Aras Community Projects and try it out
- Get the “Aras Innovator 9.4 – Impact Matrix Technical Document” from Support, and learn how to customize the Impact Matrix
- Contact Aras Consulting and Partners to advance your Solutions to the next level
- Customize the Aras Innovator PE Solution to be a Power Tool for your organization

RIGHT NOW

ACE 2014