

ARAS REQUIREMENTS MANAGEMENT

**NEXT GENERATION REQUIREMENTS MANAGEMENT SOLUTION
EMBEDDED IN PLM FOR SYSTEMS ENGINEERING**

Aras Requirements Management combines advanced requirements management functionality with enterprise PLM providing powerful capabilities for complex systems engineering and systems of systems planning, development and realization.



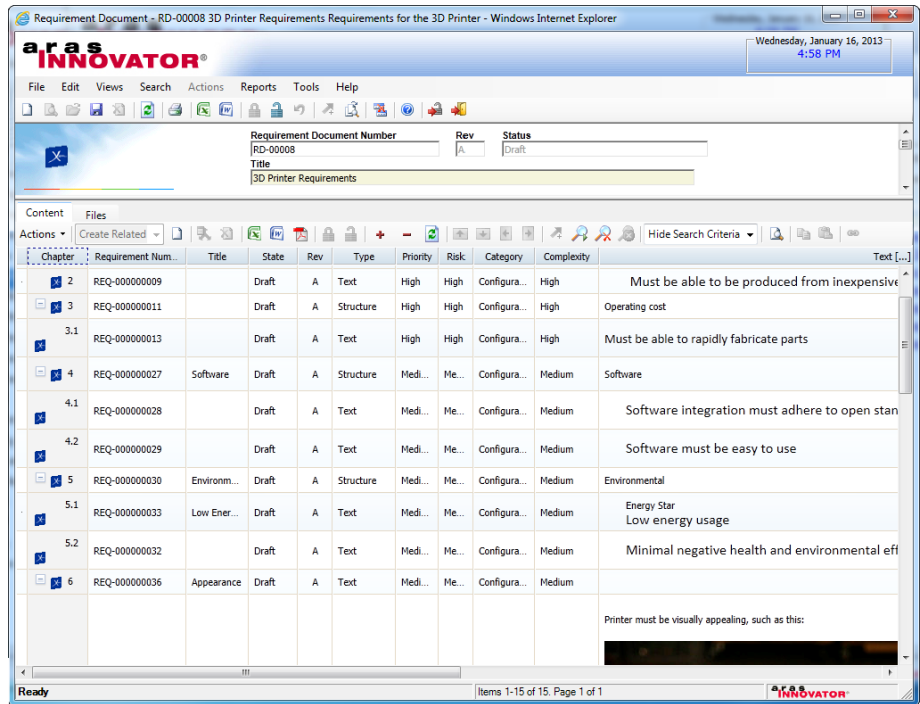
“ISSUES SPANNING MULTIPLE DISCIPLINES ARE DIFFICULT TO CATCH WHEN RELYING SOLELY ON AN ISOLATED REQUIREMENTS MANAGEMENT TOOL. REQUIREMENTS SIMPLY REPRESENT ONE MORE VIEW OF A SYSTEM OR PRODUCT STRUCTURE. THEY MUST BE MANAGED WITH THE SAME CAPABILITIES SUPPORTED, INCLUDING THE ORGANIZATION OF REQUIREMENTS IN STRUCTURES WITH LINKS AND DEPENDENCIES, VERSIONING, THE DEFINITION OF BASELINES, CHANGE AND CONFIGURATION MANAGEMENT.”

*‘INTEGRATING REQUIREMENTS MANAGEMENT ACROSS PRODUCT DEVELOPMENT’
A CIMDATA COLLABORATIVE PRODUCT DEVELOPMENT ASSOCIATES REPORT*

Today’s advanced systems and products are extremely complicated and the level of complexity is increasing geometrically as new generations of systems come to market. They include a combination of hardware, software and electronics from a variety of sources both inside your company and from customers and outsourced partners. These requirements span a wide range of disciplines and domains and they change on a moment’s notice.

Whether you’re brand new to Requirements Management or you’ve been using DOORS, SLATE, MKS Integrity or any of other popular requirements management authoring products for years, you’ve probably realized that you just can’t develop the systems of tomorrow with yesterday’s tools.

Aras Requirements Management is a next generation requirements management solution embedded in enterprise PLM for systems engineering. With Aras Requirements Management global enterprises get the advanced capabilities they need to meet complex customer demands, drive product quality and minimize risks.



Aras Requirements Management is a next generation requirements management solution embedded in enterprise PLM for systems engineering. Powerful and easy to use, Aras Requirements Management provides comprehensive features with secure web browser access and a familiar look and feel for users across the enterprise.

ADVANCED FUNCTIONALITY YOU WANT & POWERFUL CAPABILITIES YOU NEED

Aras Requirements Management embeds advanced requirements management functionality in enterprise PLM providing powerful capabilities for complex systems engineering and systems of systems planning, development and realization. With Aras Requirements Management, users can identify, associate, track and trace different types of requirements - including physical, functional, logical and performance requirements - and validate that the system or product satisfies the original intent.

“BRINGING TOGETHER REQUIREMENTS MANAGEMENT AND PLM ISN’T A NEW IDEA. IT JUST HASN’T BEEN DONE VERY WELL TO DATE. WE DIDN’T ACQUIRE A SEPARATE REQUIREMENTS MANAGEMENT SYSTEM AND TRY TO STITCH IT IN TO OUR EXISTING TECHNOLOGY. WE BUILT IT RIGHT ON OUR PLM PLATFORM SO GLOBAL BUSINESSES GET ALL OF THE ADVANCED FUNCTIONALITY ALONG WITH THE SCALABILITY, SECURITY AND FLEXIBILITY THEY REALLY NEED WITHOUT HAVING TO DEAL WITH TWO DIFFERENT SYSTEMS.”

PETER SCHROER
ARAS PRESIDENT

ADVANCED FUNCTIONALITY	POWERFUL CAPABILITIES
▶ Requirements Hierarchy	▶ Embedded in PLM
▶ Requirements Versioning	▶ Enterprise Scalability
▶ Trace Matrix	▶ Global Collaboration
▶ Configuration Management	▶ Need-to-Know Security
▶ Change Management	▶ Web-browser Access
▶ Impact Analysis	▶ Highly Flexible
▶ Compliance & Audit	▶ Extensibility
▶ Closed Loop Validation	▶ Federated Integration

MULTI-DISCIPLINE REQUIREMENTS HIERARCHY

Aras Requirements Management enables the creation of a single, multi-discipline requirements hierarchy that can be organized into multiple requirements documents that address each individual discipline including mechanical, electrical, software, firmware and others. Each requirements document has chapters and sections with configurable version control throughout the hierarchy.

A multi-discipline hierarchy enables the organization of requirements by traditional discipline or other groupings without losing their place in the overall hierarchy. This capability is critical for designing today’s complex products and systems where a single requirement is often addressed by a combination of hardware, software and electronics.

Requirements are then linked to specifications, parts, Bills of Material, test plans and other PLM items at different phases of the lifecycle becoming part of the overall configuration. Change management workflow assures requirements stay in sync as the system or product evolves over the life cycle.

SOLUTION HIGHLIGHTS

Enhanced Requirements Capture - Make anything a requirement including Files, Emails, Scanned Images, URL links, Pictures, Videos (even from YouTube), as well as existing PLM items, such as Parts, Materials, Drawings and Models

Trace Matrix Verification - Provides traceability of requirements to verify that systems, subsystems and interfaces satisfy all of requirements, from high-level conceptual down to the detailed component-level

Comprehensive Impact Analysis - Requirements are included in the impact analysis on proposed changes and can become affected items on ECRs & ECOs

Closed Loop Validation - Full support for validation plans, procedures and all related documentation with reporting, sign-offs and workflow

Complete Compliance - A full audit trail with change history can be automatically recorded for environments with compliance and regulatory conditions

CMMI - Supports CMMI Level 5 processes for Requirements Management

Powerful & Easy to Use – Comprehensive features with secure web browser access and familiar look and feel for users across the enterprise

Multi-Discipline - Simultaneously manage requirements from many different disciplines – mechanical, electronics & electrical, firmware and software – together in one environment for complex systems engineering

Cross-Functional - Achieve requirements collaboration with Product Management, Marketing, Quality, Manufacturing, Procurement, Field Support and other groups throughout the product life cycle

Extended Enterprise Collaboration - Gather requirements from across the extended enterprise and involve customers, subcontractors and outsourced manufacturers with strict security for need-to-know visibility and access

Federated Integration - Connects securely to existing enterprise systems and authoring tools throughout the company using Web services



300 Brickstone Square
Andover, MA 01810
USA
[978] 691-8900 Phone
[978] 794-9826 Fax
info@aras.com
www.aras.com

© 2012 Aras Corporation. All rights reserved. Aras and Aras Innovator are either registered trademarks or trademarks of Aras Corporation in the United States and/or other countries. The names of other actual companies and products mentioned herein may be the trademarks or registered trademarks of their respective owners.

130117