

Solutions for Performance Driven Companies
Microsoft Enterprise Open Source

Multi-site Optimization
Configuration for Global Deployment

Aras Community Network
International Event: Spring 2008

May 7, 2008



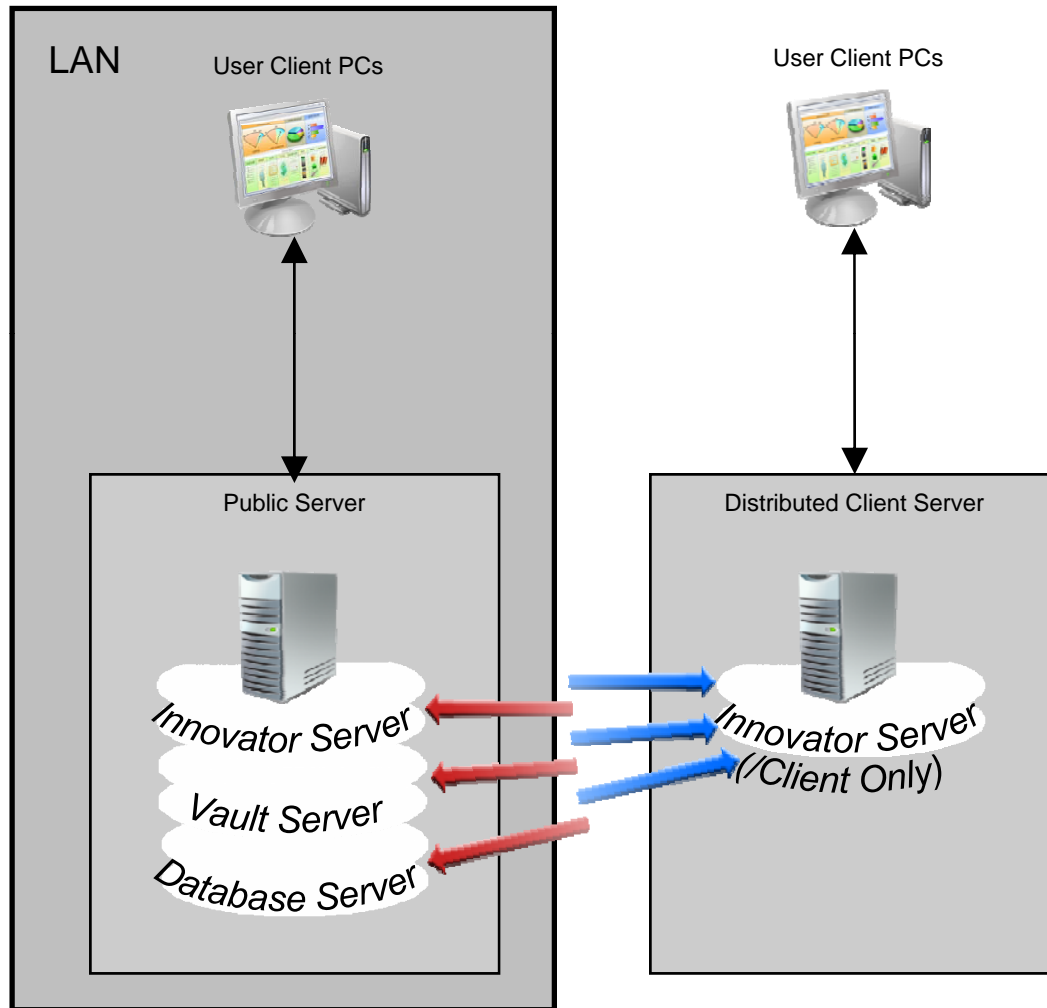
- ❖ Improve load time over WAN
- ❖ Reduce # of requests to remote servers over slower worldwide networks

- ❖ Pre-load forms, Item metadata, etc.
- ❖ Data loaded based on use
- ❖ Reduces time to load Items
- ❖ Can be enabled/disabled per user

- ❖ The simplest thing to improve performance is to turn IIS compression on the web server.
 - ✓ Compress dynamic content of .asp and .aspx pages requested over the network
 - ✓ Do not compress dll's, exe's, or static content
 - ✓ IIS Compression script (compression.bat)
 - Available as a downloadable project
 - <http://www.aras.com/communityProjects>

- ❖ UI requests are made to a local server
- ❖ Data requests are made to remote server
- ❖ Decreased load on main web server

Distributed / Client

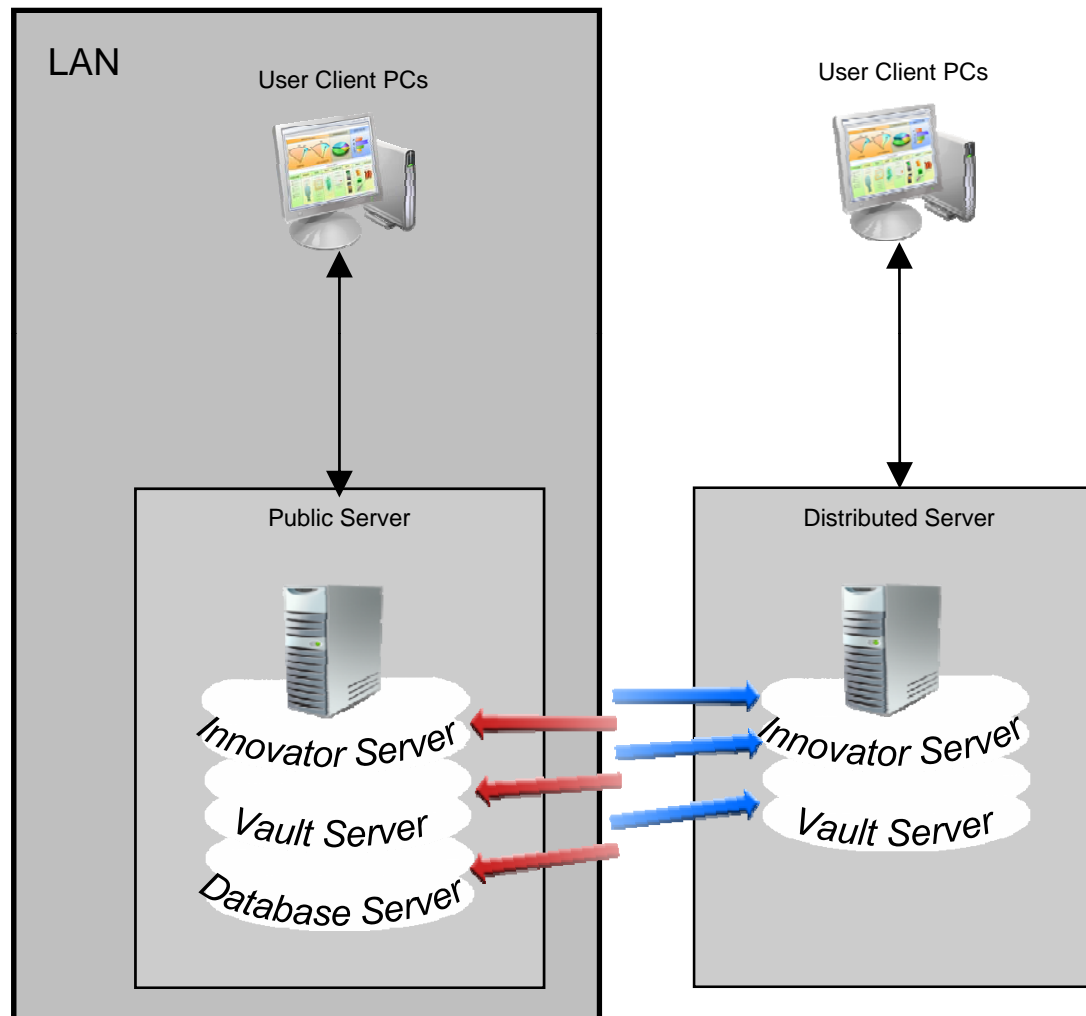


Additional maintenance and config requirements:

- ❖ Vault Server URL's must be hard coded in the database
- ❖ Innovator Server URL should be hard coded in the VaultServer.aspx
- ❖ /Client folder changes must be kept in sync
- ❖ Remote server backups

- ❖ Store files in multiple vaults
- ❖ Vault files based on creator
- ❖ Files vaulted are called from local server

Distributed / Vault



Additional maintenance and config requirements:

- ❖ Vault Server URL must be accessible to all User Clients and Innovator Servers
- ❖ Vault Server URL's must be hard coded in the database
- ❖ Innovator Server URL should be hard coded in the VaultServer.aspx
- ❖ Remote server backups

Recent Test Data



	Mdata load off	Mdata load finished	Mdata load off, local client	Mdata load finished, local client	Mdata load off, Compression on	Mdata load finished, Compression on	Mdata load off, Local client, Compression on	Mdata load finished, local client, Compression on
test1 (log1)								
Login	00:01:13:90	00:01:41:70	00:00:13:19	00:00:26:98	00:01:17:15	00:01:16:00	00:00:07:31	00:00:07:39
Search for a specific project	00:00:01:12	00:00:01:18	00:00:01:05	00:00:01:44	00:00:01:05	00:00:01:02	00:00:01:14	00:00:00:64
RMB the Project and select View	00:01:21:84	00:02:01:01	00:00:38:44	00:00:41:18	00:01:52:50	00:01:10:72	00:00:26:96	00:00:16:33
Select Expand All	00:01:19:46	00:02:20:60	00:00:31:70	00:00:18:58	00:00:12:92	00:00:09:79	00:00:16:66	00:00:10:06
test2 (log2)								
Login	00:00:50:45	00:00:36:00	00:00:12:02	00:00:09:81	00:00:40:66	00:00:40:71	00:00:05:14	00:00:06:16
Search for a specific project	00:00:01:04	00:00:01:02	00:00:01:15	00:00:01:35	00:00:01:15	00:00:01:06	00:00:01:02	00:00:00:81
RMB the Project and select View	00:00:55:75	00:00:57:41	00:00:35:22	00:00:20:37	00:00:25:15	00:00:22:29	00:00:27:28	00:00:11:22
Select Expand All	00:00:25:73	00:01:21:85	00:00:24:43	00:00:16:71	00:00:10:49	00:00:10:10	00:00:39:00	00:00:15:43
test3 (log3)								
Login	00:00:42:92	00:00:30:02	00:00:10:05	00:00:13:77	00:00:54:16	00:00:53:87	00:00:05:51	00:00:09:10
Search for a specific project	00:00:01:02	00:00:01:03	00:00:01:39	00:00:01:22	00:00:01:28	00:00:01:17	00:00:01:02	00:00:01:00
RMB the Project and select View	00:00:42:74	00:00:47:49	00:00:23:85	00:00:18:39	00:00:38:02	00:00:41:54	00:00:30:38	00:00:11:44
Select Expand All	00:00:56:28	00:00:43:87	00:00:21:87	00:00:17:16	00:00:37:07	00:00:12:49	00:00:10:45	00:00:12:47
test4 (log4)								
Login	00:01:09:38	00:00:37:27	00:00:08:26	00:00:08:87	00:00:35:01	00:00:30:63	00:00:05:77	00:00:06:82
Search for a specific project	00:00:01:02	00:00:00:96	00:00:01:24	00:00:01:34	00:00:01:07	00:00:01:05	00:00:00:97	00:00:00:82
RMB the Project and select View	00:00:58:33	00:00:26:75	00:00:56:19	00:00:18:46	00:01:13:84	00:00:38:52	00:00:12:85	00:00:13:96
Select Expand All	00:01:21:65	00:00:33:13	00:00:19:68	00:00:17:38	00:00:12:80	00:00:15:06	00:00:15:01	00:00:12:04

Recent Test Data



- ❖ Average speed of connection with Europe (file download) – 200-300 Kbit/c. Proxy was REMOVED from the connection loop to create HARSHER conditions. (Proxy caches images etc)
- ❖ Both, compression and local client help. “Login” is more affected by local client, “expand all” is more affected by compression (brings 700 K AML), “view project” by both (brings 160K AML, opens tear off window)
- ❖ Metadata load takes between 1 min and 1.5 min without compression, but only about 10-15 c with compression

Production Instance

