

Solutions for Performance Driven Companies
Microsoft Enterprise Open Source

CAD Integration Strategies
Approaches for Integrating PLM and CAD

Aras Community Network

International Event: Spring 2008

May 7, 2008





**Aras Community Network
International Event Spring 2008
May 7th Chicago**

Daniel Büeler

▶ **ICP Solution – Company OverView**

- ▶▶ **50+ PLM Experts**

- ▶▶ **Responsible for 120+ PLM Customer**

▶ **CAD Integration**

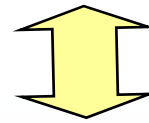
- ▶▶ **Conzept**

- ▶▶ **Functionality**

- ▶▶ **Solutions**

PLM “one stop shop”

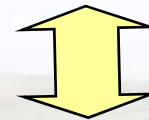
Customer



icp solution
plm competence partners

- ▶ Workshops
- ▶ Training
- ▶ Implementation
- ▶ Development

▶ 50+ PLM Experts





Sales and Service

- ▶ Karlsruhe / Stutensee
- ▶ München
- ▶ Berneck
- ▶ Frick

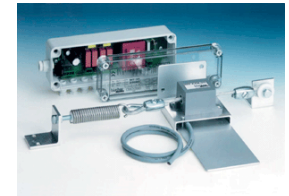
- ▶ Hamburg
- ▶ Niederrhein
- ▶ Siegburg
- ▶ Dortmund

Product Structure and Documents

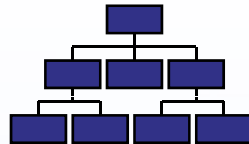
Documents



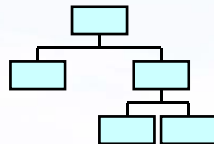
BOM



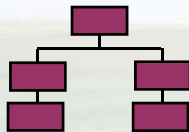
Mechanical Design



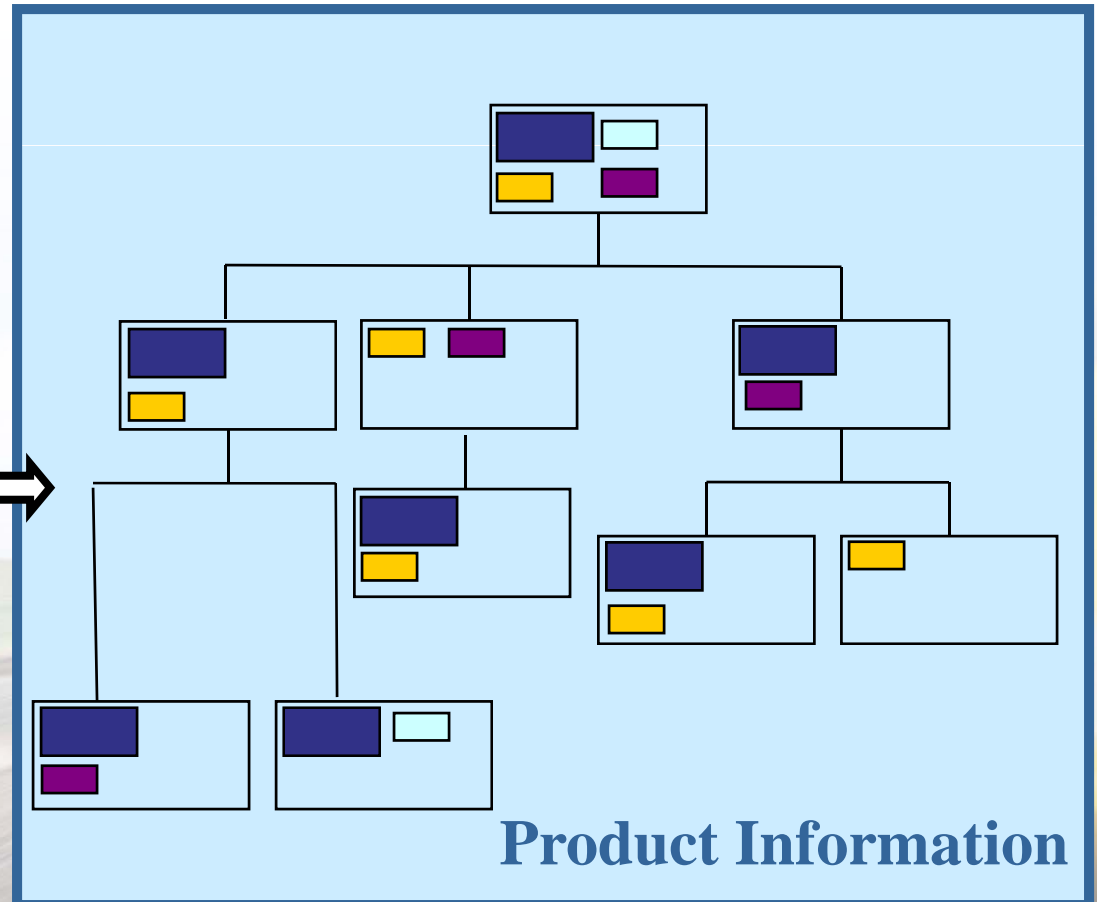
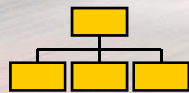
Electrical Design



Software Design



Docs



Product Information

CAx Connector to aras INNOVATOR

CAD / CAE

▶ Mechanical

- ▶▶ AutoCAD
- ▶▶ Inventor
- ▶▶ SolidWorks
- ▶▶ SolidEdge

Electrical

- ▶▶ EPLAN
- ▶▶

API

Interface

ICP Solution
CAx Kernel

Technology:
.NET

API

PLM

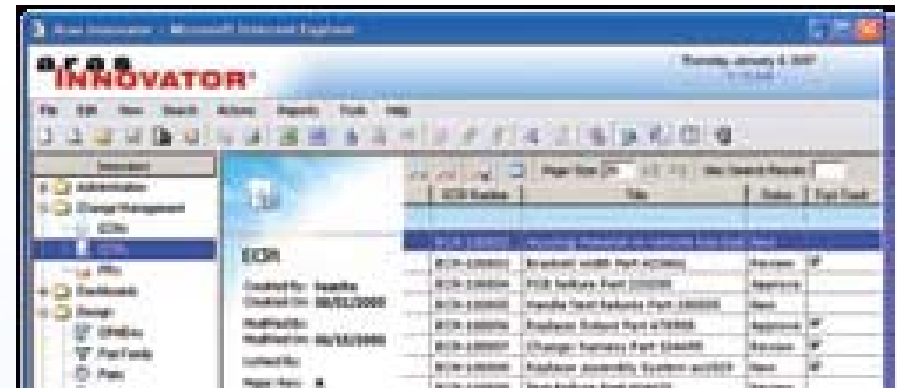
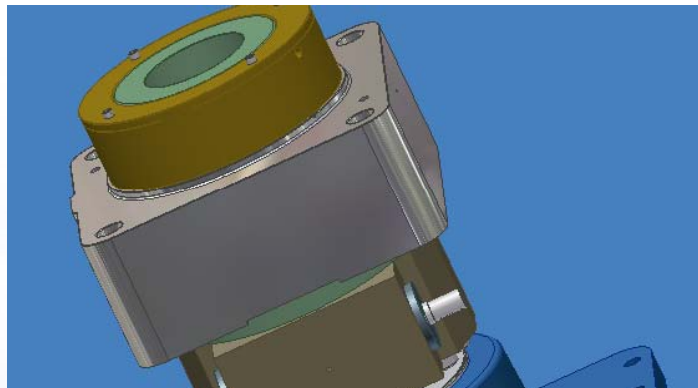
aras
INNOVATOR[®]

CAx Connector to aras INNOVATOR

Interface

CAD / CAE

PLM



Action

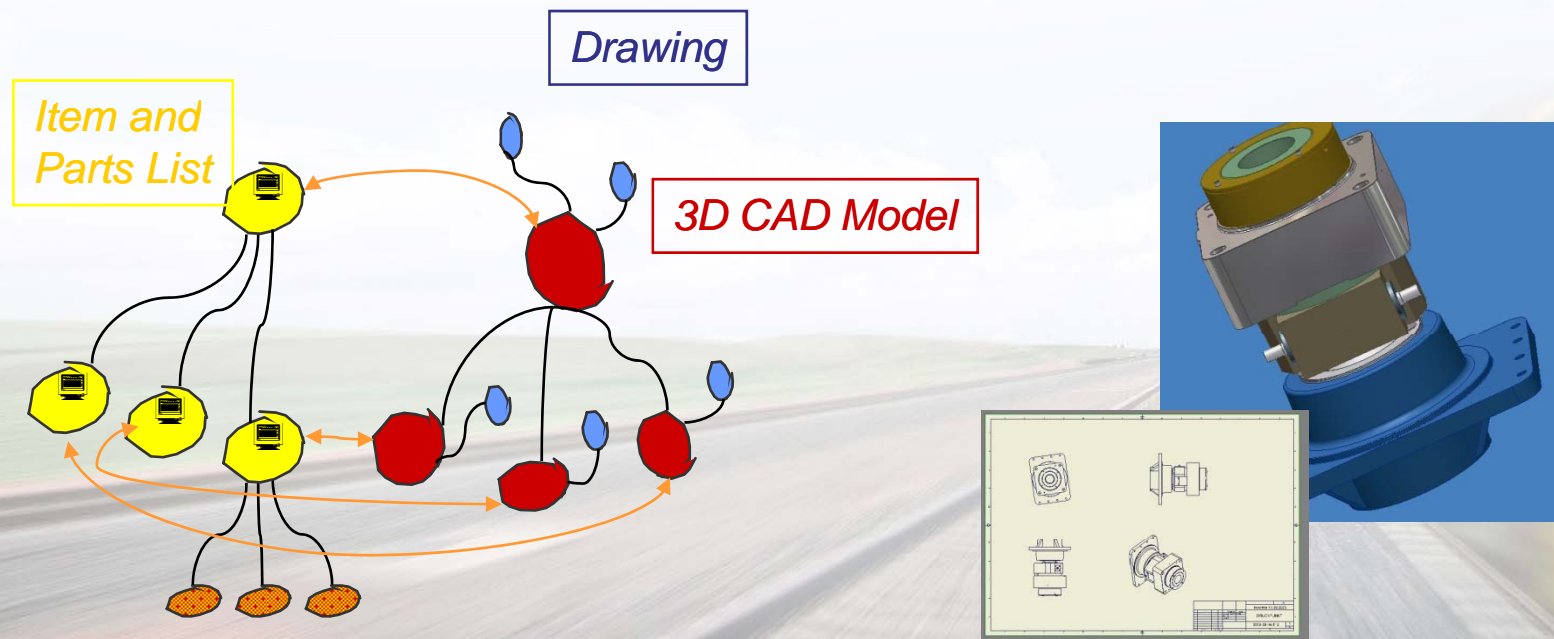
4/5 110

110 120 230 <>230 Checked

		Number		Sheet	Ind.	Rev.	Description	Acces	Dirty	Dusty	Item	Configurat	Doc-Type	Lev	State
0	<input checked="" type="checkbox"/>	D01679		0	0	0	UJOINT		<input checked="" type="checkbox"/>	N	P01550 - UJOIN...	Default...	3D_MODEL	110	In Work
1	<input checked="" type="checkbox"/>	D01677		0	0	0	U-JOINT_PIN1		<input checked="" type="checkbox"/>	N	P01548 - U-JOI...	Default...	3D_MODEL	110	In Work
2	<input checked="" type="checkbox"/>	D01678		0	0	0	CRANK-SHAFT		<input checked="" type="checkbox"/>	N	P01549 - CRAN...	Default...	3D_MODEL	110	In Work
4	<input checked="" type="checkbox"/>	D01680		0	0	0	CRANK-ARM		<input checked="" type="checkbox"/>	N	P01551 - CRAN...	Default...	3D_MODEL	110	In Work

► Standard Features

- Load, save a 3D Model structure as document structure in PLM
- Create a parts list, import to PLM as product structure (bom)
- Create a drawing, refresh title block data
- Batch plotting and file format conversion by PLM batch queue



▶ Embedded PLM Browser

▶▶ Aras INNOVATOR menus in CAD desktop

- ▶ Pull down menue
- ▶ Context sensitive menues

▶▶ The user can control the CAD structure and the PLM attributes, such as

- ▶ Preview
- ▶ Access rights (r/w)
- ▶ Status information (In Work, Released etc.)
- ▶ Reservation (y/n, who)
- ▶ Approval and Release operation
- ▶ Copy to new revision

▶▶ The Selective structure copy feature is enabled

- ▶ Copy of parts and/or assembly to new ident
- ▶ Copy of derived drawings to new ident

- ▶▶ **Workshops for aras INNOVATOR**
- ▶▶ **Trainings for aras INNOVATOR**
- ▶▶ **Implementation for aras INNOVATOR**
- ▶▶ **Development for aras INNOVATOR**
 - ▶ ICP AutoCAD
 - ▶ ICP Inventor
 - ▶ ICP One Space Designer
 - ▶ ICP SolidWorks
 - ▶ ICP SolidEdge
 - ▶ ICP TopSolid

 - ▶ ICP EPLAN
 - ▶ ICP ELCAD
 - ▶ ICP ecs-cad

 - ▶ ICP Dynamics

Thank you very much
for your attention

Daniel Büeler
ICP Solution GmbH
daniel.bueeler@icpsolution.com

www.icpsolution.com

