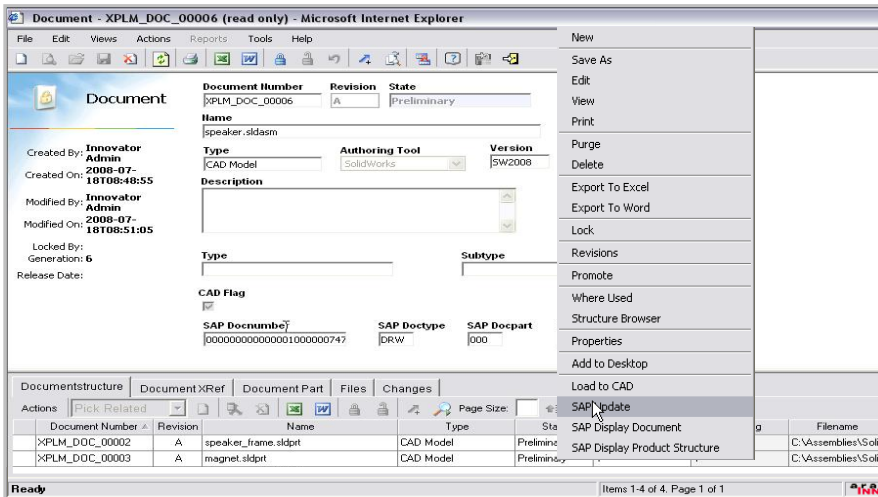


# Aras Innovator® Integration for SAP®



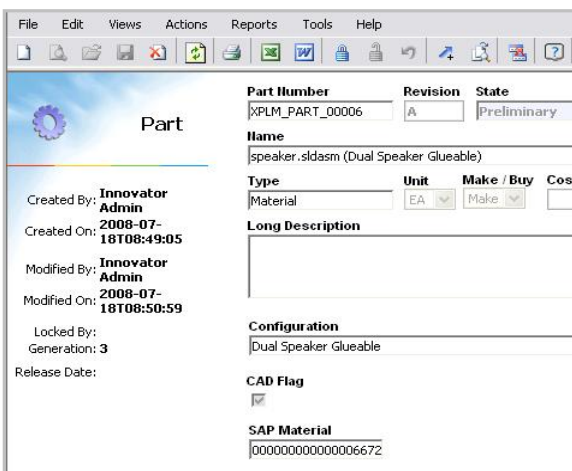
## J2xPLM® INTEGRATION PLATFORM

xPLM Solution's J2xPLM Integration Platform, a SAP certified solution, provides an Aras Innovator integration with flexible deployment options to support your engineering best practices! xPLM Solution's expertise in CAD and PLM integrations provides Aras and SAP users a robust, flexible and configurable integration.



A good integration between PLM solutions and ERP is a prerequisite to support effective and efficient engineering processes and drive increased innovation. Access to the right design data and related manufacturing and supply chain data must be readily yet securely accessible in context. No longer can designers and engineers work separate and apart from the rest of the enterprise.

xPLM Solution has leveraged their 20 years experience in building effective CAD, Product Lifecycle Management (PLM), Digital Mock Up (DMU), MS-Office and ERP integrations to offer a next generation of CAx and PDM integrations, based on their J2xPLM Integration Platform, for Aras Innovator and SAP.



### Aras Innovator Integration for SAP

The Aras Innovator integration for SAP offers Aras users an effective and intuitive integration with their SAP system. Data and structures of both Aras Innovator and SAP are integrated providing the ability for bi-directional exchange of documents, CAD files, BOMs, parts (material masters), classification, item status and more. Aras Innovator users do not need to access SAP user interfaces, but can perform all integration activities using the Aras Innovator menus and forms, this increases user adoption and satisfaction. Robust customization capabilities are provided outside the SAP environment yielding lower support and maintenance costs.

Aras Innovator parts, Bills of Materials and related documents can easily be uploaded to SAP.

### Aras Innovator Integration Features

#### User Interface Integration in Aras Innovator

- Toolbar, System Menu, Context Menu, Forms

#### Workflow Integration (Triggered by any Aras Innovator event)

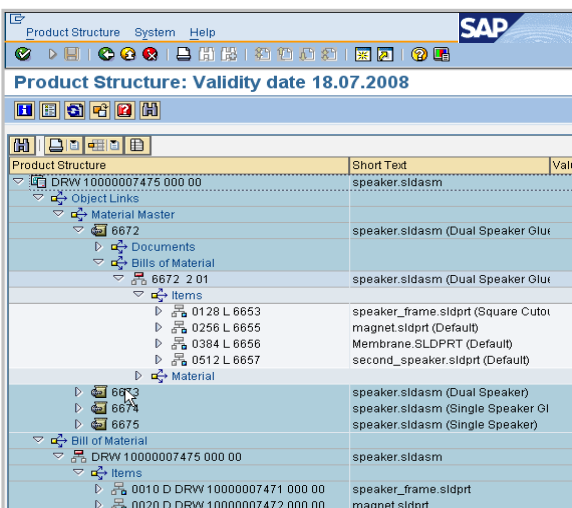
- Status Transition, Checkin/out, and Other Customer Defined Events

#### Integration Functionality – Documents Update

- Bidirectional Exchange of Metadata and Classification
- Document Structures
- Document Status Network (Release Levels)
- File Check in/out (Including Conversion to Neutral File Format)
- Integration of MS-Office and PDF documents

#### Integration Functionality – BOM/ Material/Items Update

- Bidirectional Exchange of Metadata and Classification
- Support for Aras Innovator Configurations
- Linking to Documents
- Production and Order BOM Support



Within your SAP system, uploaded items are automatically created such as material masters, BOMs and associated (linked) documents.



## J2xPLM Integration Platform Features

Deep Integration with SAP PLM Objects and Object Structures:

- SAP Document and File Management, Material Master and BOM, Classification, Change and Release Management, and SAP User Interface Integration

Additional Benefits:

- Dialogs and features can be enhanced and configured specifically for users
- J2xPLM Integration Platform can access multiple PLM and ERP sites in parallel
- Batch processor enables file conversions and bulk transfer operations
- Script-Based Process Definition Language
- COM Automation Support (VBA Script, Java Script, C#)
- XML definition enables creation and configuration of new integration objects (e.g. any SAP Bapi or user defined SAP RFC component)

## System Requirements

J2xPLM:	V 1.0 or later
SAP:	SAP 4.x or later
Aras Innovator:	8.2.0 or later



xPLM Solution's J2xPLM Integration Platform provides Aras users efficient and robust CAX and PDM integrations. The J2xPLM Integration Platform supports integration with many PDM/PLM systems, CAD systems, ERP systems, Visualization systems, ECAD systems and MS-Office.

**SAP® Certified**  
Powered by SAP NetWeaver®



The J2xPLM Integration Platform v1 is ready for SAP NetWeaver. This gives you the option to take advantage of the latest service-oriented technologies and business platform offered by SAP.

xPLM Solution is an official SAP Software Partner providing superior CAD and PLM integration solutions for SAP systems.

## About xPLM Solution

xPLM Solution with headquarters in Dresden develops integration solutions between industry leading CAD, PLM and ERP systems and provides deployment and support services to the PLM industry. xPLM Solution brings with them about 300 years of accumulated professional experience in the PLM market. For more than 20 years, the team has been at the forefront of developing and deploying robust, flexible, configurable and cost efficient CAD and PLM integrations. The J2xPLM Integration Platform takes advantage of the latest service-oriented technologies.

## Solutions and Deployment Services

- CAD Integrations for PLM and ERP
- PLM Management Consulting
- PLM Deployment Services
- PLM Training and Documentation
- Client Project Support Services



xPLM Solution is a certified Aras Partner, providing highly qualified complementary solutions and implementation experts with focused CAD/PLM skills and experience to ensure success.

**xPLM**  
Solution

**Experience in Product Lifecycle Management**

## xPLM Solution GmbH

Helgolandstr. 9, D-01097 Dresden, GERMANY  
Email: [xplm@xplm.com](mailto:xplm@xplm.com); Internet: [www.xplm.com](http://www.xplm.com)  
+49 (351) 8265 821 (Phone)  
+49 (351) 8265 888 (Fax)

## Flyer xPLM Innovator-SAP-EN-2008-08-06

Copyright © 2008, All Rights Reserved. xPLM, J2xPLM are trademarks of xPLM Solution GmbH. All other brands or product names are trademarks or registered trademarks of their respective holders.